

This document contains information that helps to detect or fix connection problems.

Table of content

1. MIKE WaterNet Advisor does not behave correctly, or parts of the User Interface appears to be missing	2
2. MIKE WaterNet Advisor application seems to be outdated.....	3
3. Network layers (pipes, tanks, etc.) are not displayed in the Map window and the Map window contains only Open Street Map.....	4
4. MIKE WaterNet Advisor update utility does not run automatically	6
5. New SSL protocol was received, and it needs to be updated in the application.....	8
6. Firewall blocks Geoserver.....	13
7. Cannot open the login page or run simulations, Windows password changed	14

1. MIKE WaterNet Advisor does not behave correctly, or parts of the User Interface appears to be missing

1. Delete data from cache in your Web browser.

2. MIKE WaterNet Advisor application seems to be outdated

1. Run the update utility that is located on the MIKE WaterNet Advisor server:
C:\DHI\WNAUpdater\UpdateUtilityGUI.exe

3. Network layers (pipes, tanks, etc.) are not displayed in the Map window and the Map window contains only Open Street Map

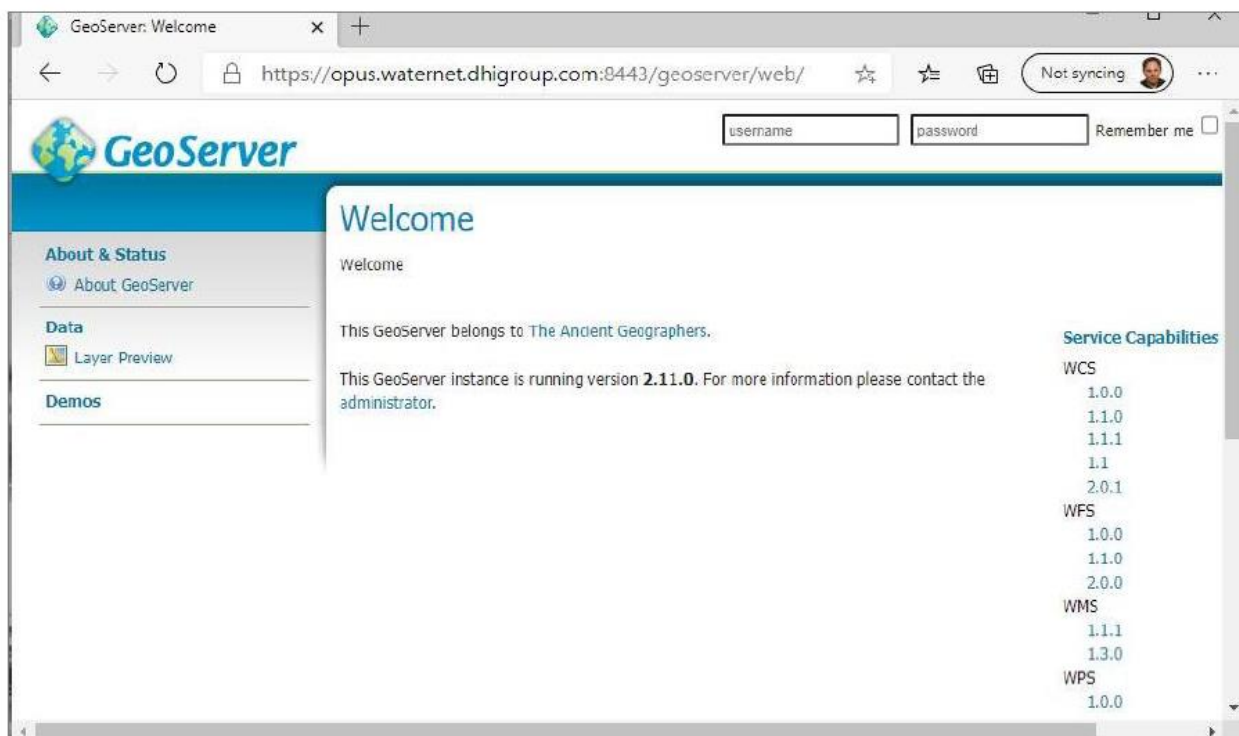
1. Allow for TCP inbound and outbound connections on ports 80 and 8080 on the firewall and your network security. In case of SSL connections, check the port 8443 too.
2. Check if the network display problems remain when you zoom-in into a small portion of a network.
3. Check if the network allows for the connection to the Geoserver
 - In case of secure SLL connections: `http://<name>:8443/geoserver/`

Where <name> is the computer/Waternet Advisor *server name*, e.g. *abc.waternet.dhigroup.com*

- In case of non-SLL connections: `http://<name>:8080/geoserver/`

Where <name> is the computer/Waternet Advisor *server name* IP address or a name, or “localhost” if the application if the connection is made from the server where the application is installed.

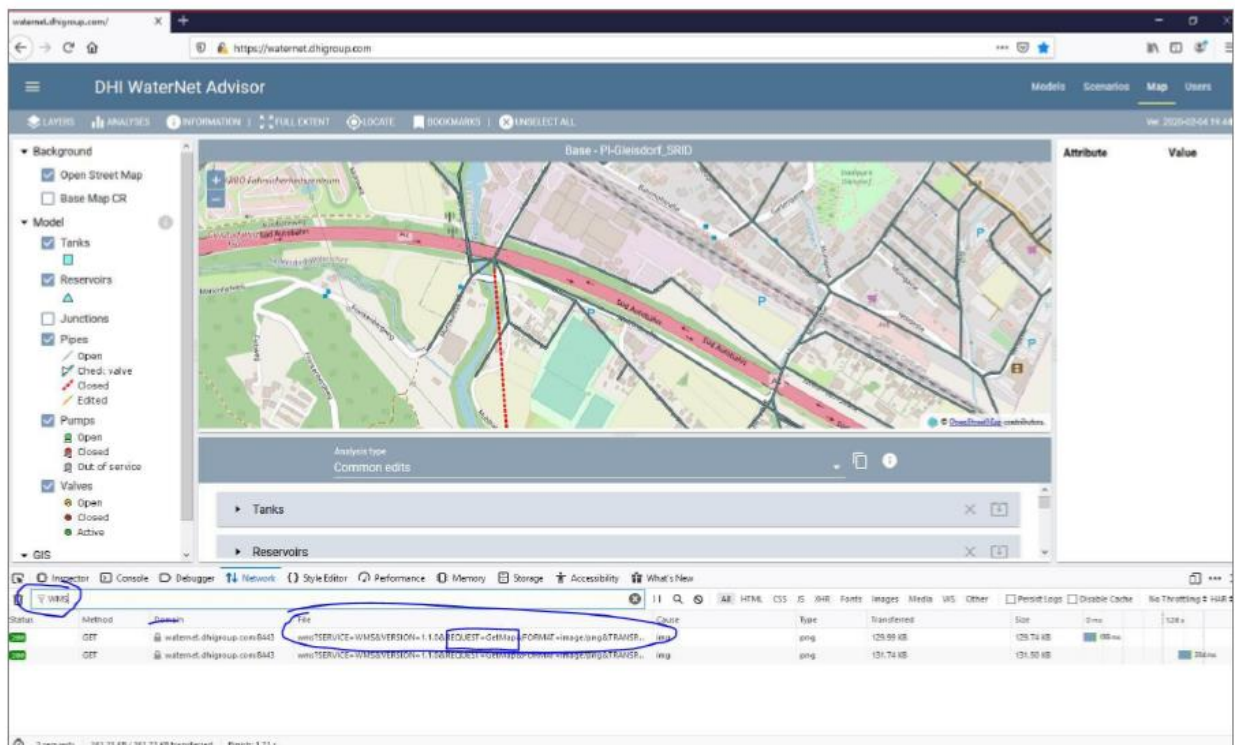
If the connection was successful, it will display a page as shown below where they can login as “admin” and use the credentials provided in the delivery protocol. In case that there is an error, report the error back to us.



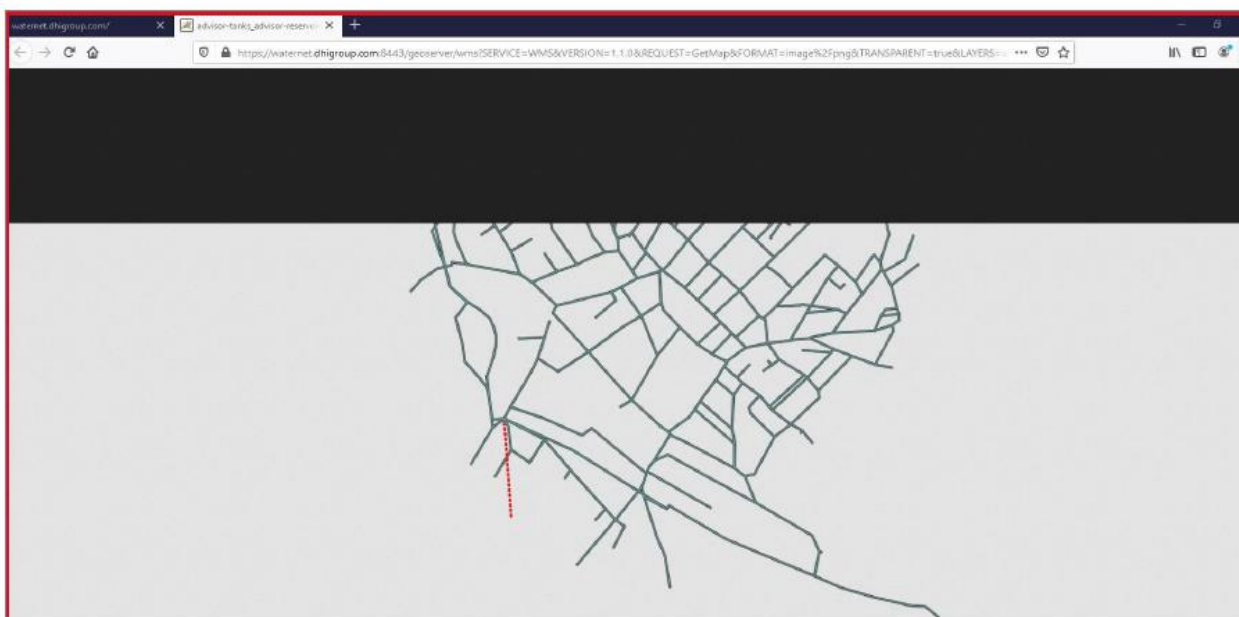
4. Connect to MIKE WaterNet Advisor and select “Web Developer” from your Web browser and select “Network”. The screen shot below is from Firefox.

- Zoom in the Map so that the application start reporting messages

- Enter "WMS" into the Filter and locate one that has "GetMap" in the request body.



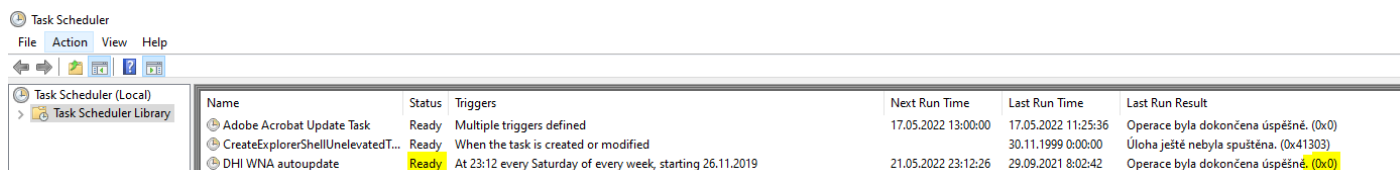
Double click the request or right-click the request and copy the URL and open it in a new browser window. If all works well it will display the request result in the browser. As it does not work well and an error message is displayed, report the error message back to us.



4. MIKE WaterNet Advisor update utility does not run automatically

1. Check Task scheduler

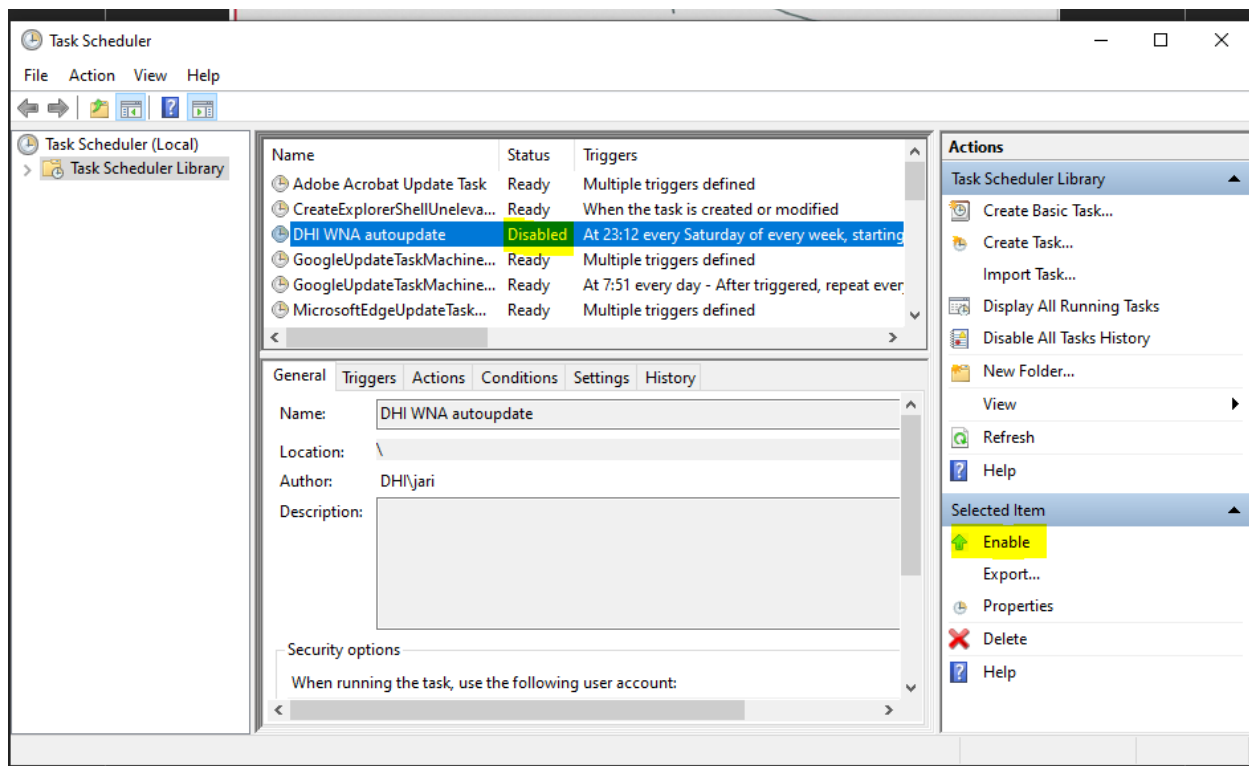
- a. Status must be ready (if not you must enable it)
- b. Last Run Result code must be (0x0)



Name	Status	Triggers	Next Run Time	Last Run Time	Last Run Result
Adobe Acrobat Update Task	Ready	Multiple triggers defined	17.05.2022 13:00:00	17.05.2022 11:25:36	Operace byla dokončena úspěšně. (0x0)
CreateExplorerShellUnelevatedT...	Ready	When the task is created or modified		30.11.1999 0:00:00	Úloha ještě nebyla spuštěna. (0x41303)
DHI WNA autoupdate	Ready	At 23:12 every Saturday of every week, starting 26.11.2019	21.05.2022 23:12:26	29.09.2021 8:02:42	Operace byla dokončena úspěšně. (0x0)

2. If status not ready

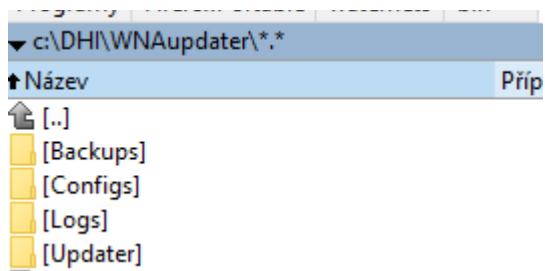
- a. In the right menu click to “Enable”



- b. Run AutoUpdater from Task Scheduler.
- c. Wait 30 minutes.
- d. Check last log (common way is c:\DHI\WNAupdater\Log*) is everything is ok.

3. If Last Run Result has wrong code

- a. Check AutoUpdater folder (common way is c:\DHI\WNAupdater).
- b. If is here more that four folder its need clean up.
- c. Delete all folders and files, only Backup, Configs, Logs and Updater stay here.

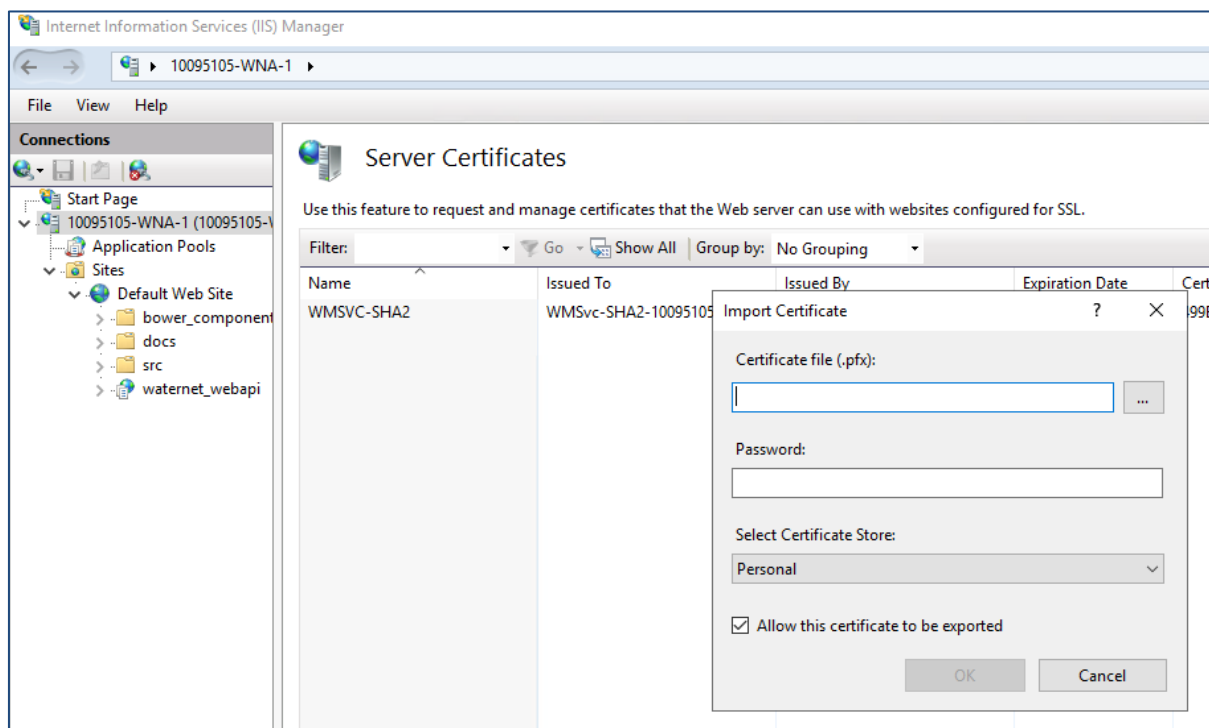
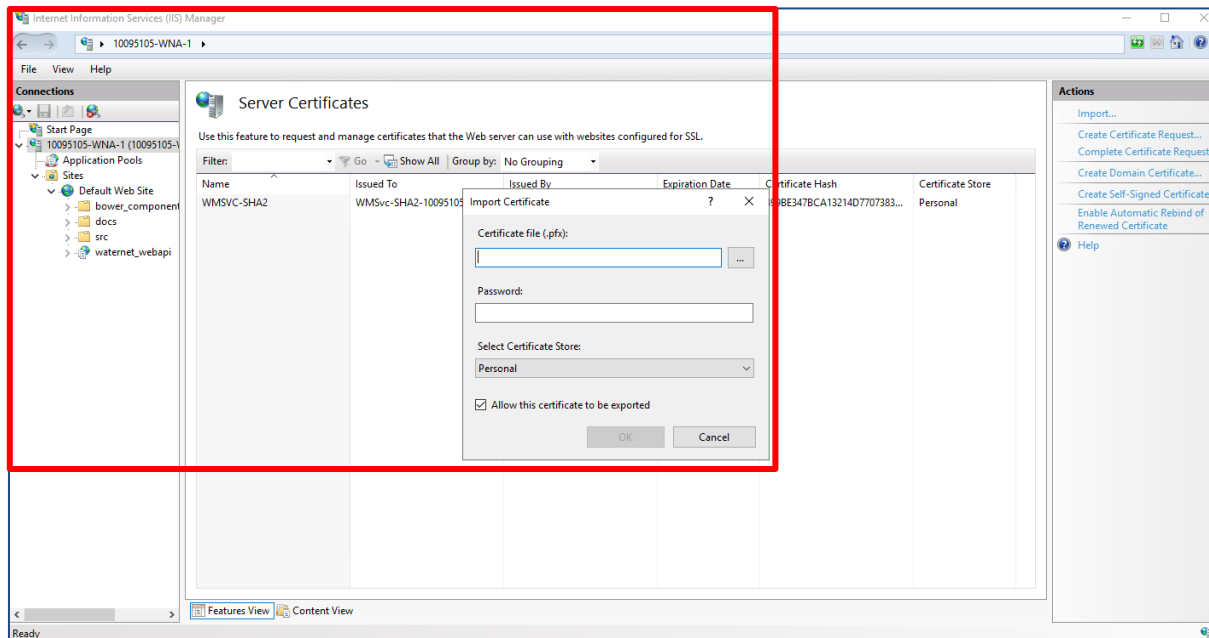


- d. Go to Update folder, copy all files here and paste there files to WNAupdater folder.
- e. Run Autoupdater from Task Scheduler.
- f. Wait 30 minutes.
- g. Check last log (common way is c:\DHI\WNAupdater\Log\ is everything is ok.

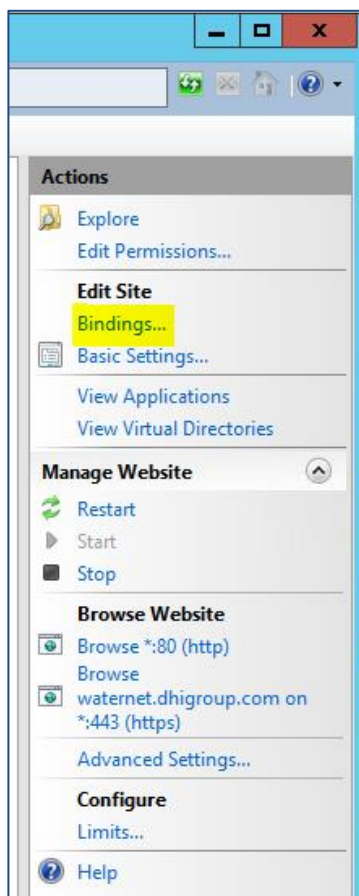
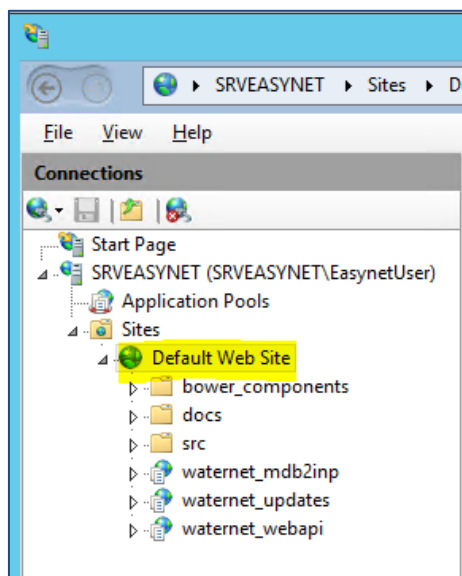
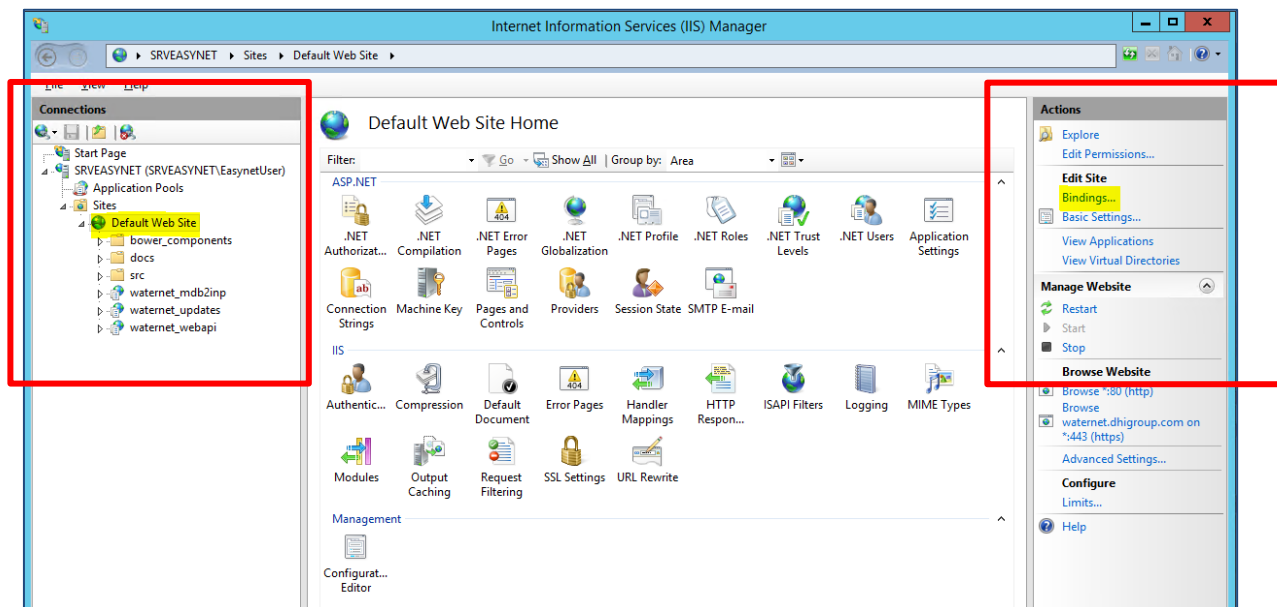
5. New SSL protocol was received, and it needs to be updated in the application

These steps need to be done on the server side.

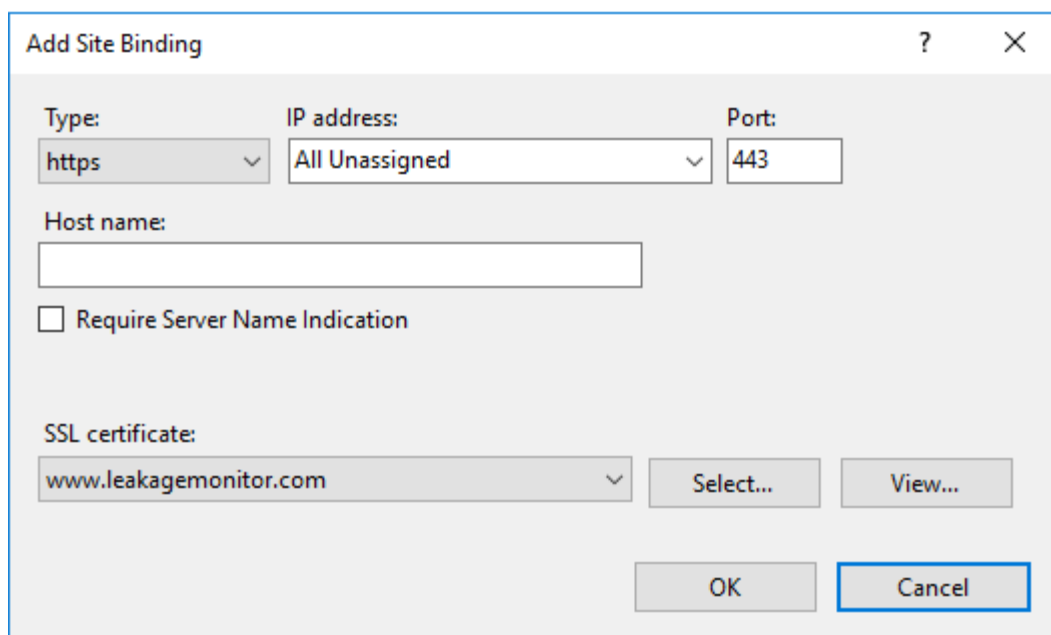
1. Open IIS Internet Information Services on the server and add the SSL certificate



2. Edit bindings



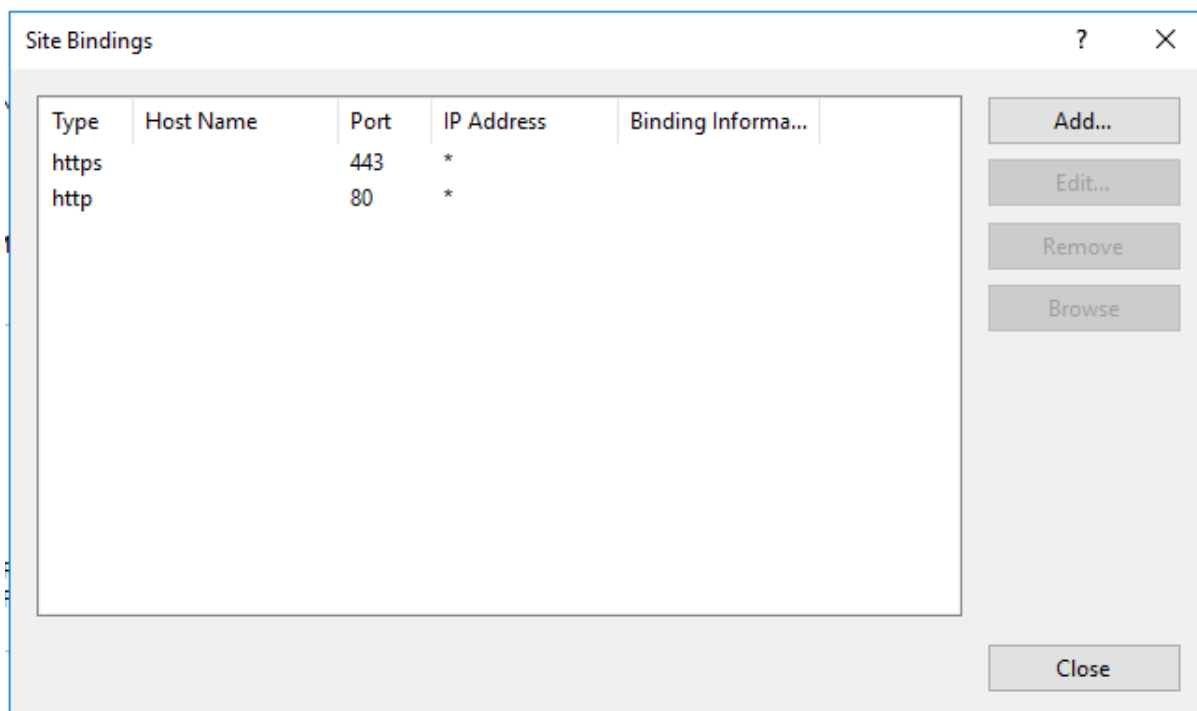
3. Add site binding



The 'Add Site Binding' dialog box contains the following fields and controls:

- Type:
- IP address:
- Port:
- Host name:
- Require Server Name Indication
- SSL certificate:
-

4. Change the site bindings order



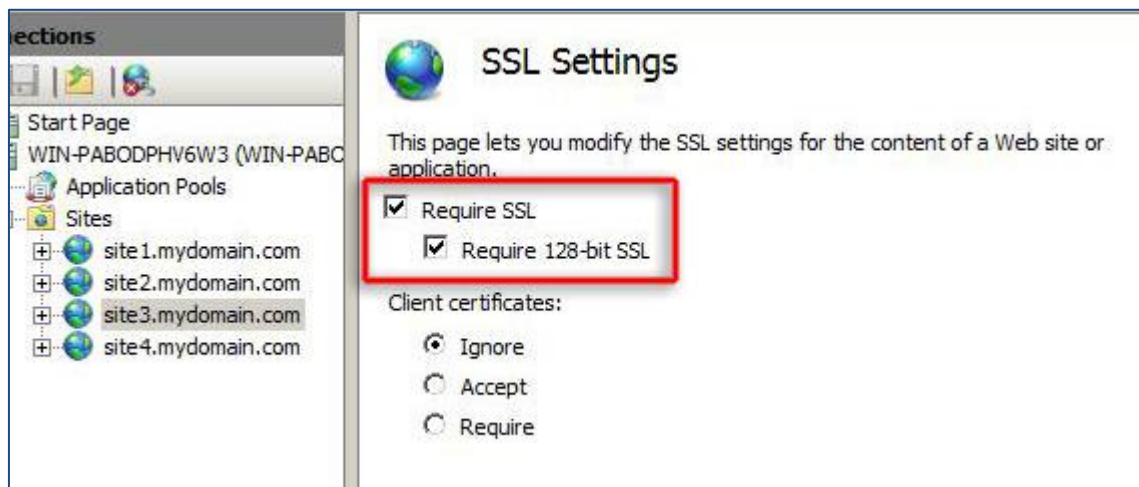
The 'Site Bindings' dialog box displays a table of current bindings and control buttons.

Type	Host Name	Port	IP Address	Binding Informa...
https		443	*	
http		80	*	

Control buttons on the right side of the dialog:

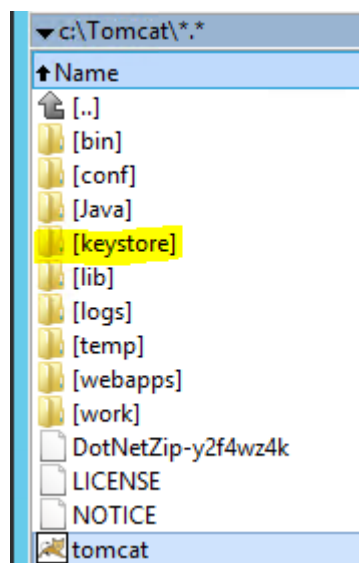
-
-
-
-
-

5. Redirect http to https:

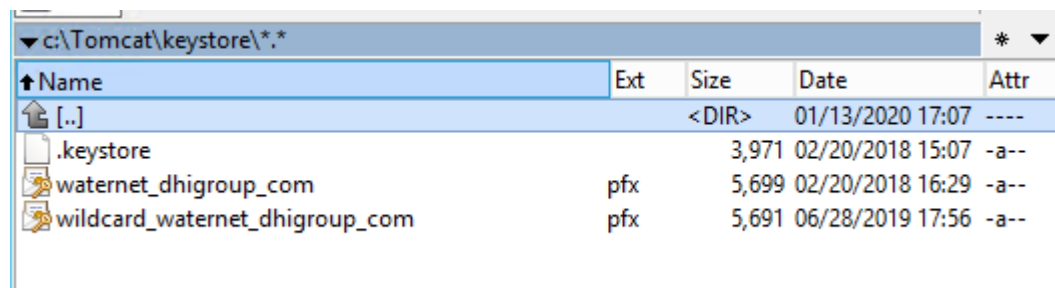


The following steps need to be done to update the WaterNet Advisor installation for a new SLL protocol.

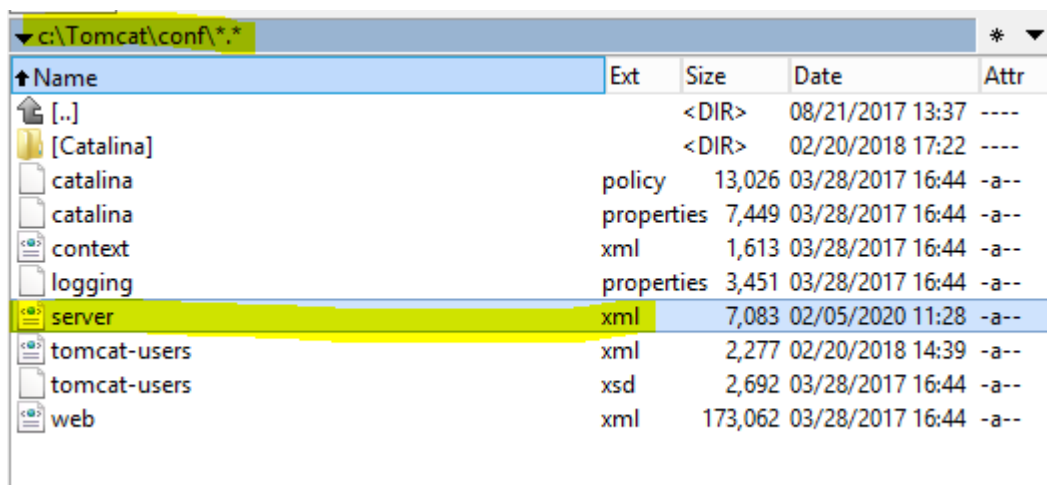
1. Update Tomcat. Navigate to Tomcat/keystore folder:



And paste new certificate there:

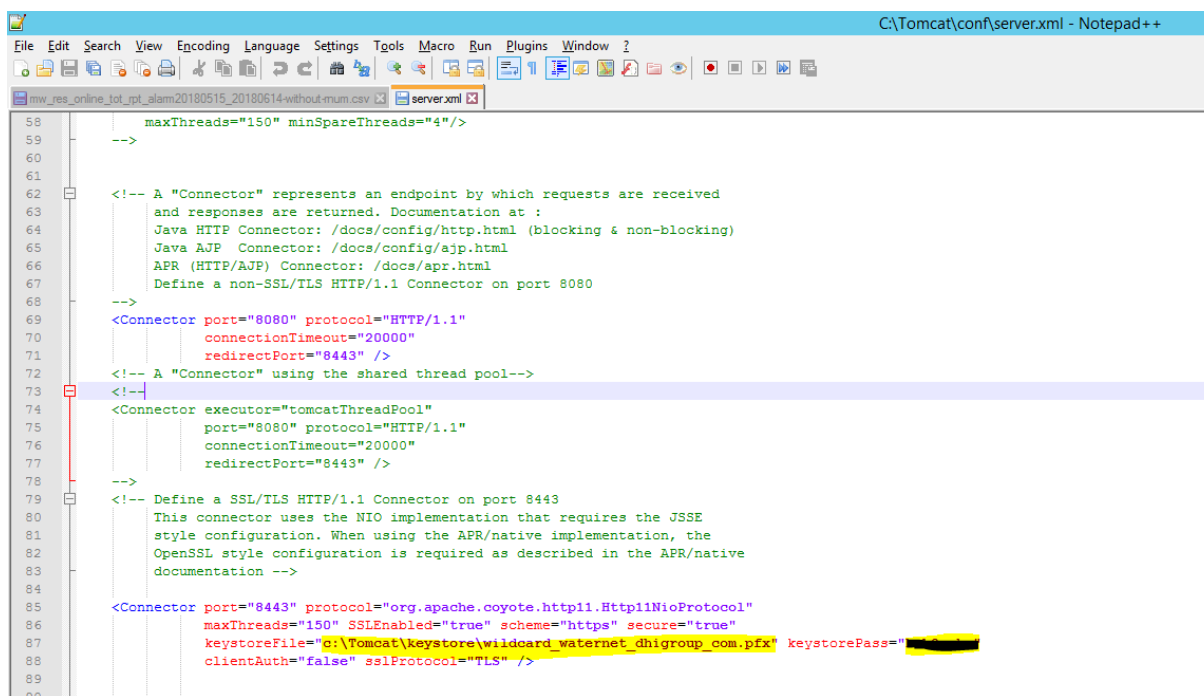


2. Navigate to tomcat/conf/server.xml



Name	Ext	Size	Date	Attr
[..]		<DIR>	08/21/2017 13:37	----
[Catalina]		<DIR>	02/20/2018 17:22	----
catalina	policy	13,026	03/28/2017 16:44	-a--
catalina	properties	7,449	03/28/2017 16:44	-a--
context	xml	1,613	03/28/2017 16:44	-a--
logging	properties	3,451	03/28/2017 16:44	-a--
server	xml	7,083	02/05/2020 11:28	-a--
tomcat-users	xml	2,277	02/20/2018 14:39	-a--
tomcat-users	xsd	2,692	03/28/2017 16:44	-a--
web	xml	173,062	03/28/2017 16:44	-a--

And add the path and password for you certificate into the server.xml file:



```

58     maxThreads="150" minSpareThreads="4"/>
59     -->
60
61
62     <!-- A "Connector" represents an endpoint by which requests are received
63     and responses are returned. Documentation at :
64     Java HTTP Connector: /docs/config/http.html (blocking & non-blocking)
65     Java AJP Connector: /docs/config/ajp.html
66     APR (HTTP/AJP) Connector: /docs/apr.html
67     Define a non-SSL/TLS HTTP/1.1 Connector on port 8080
68     -->
69     <Connector port="8080" protocol="HTTP/1.1"
70         connectionTimeout="20000"
71         redirectPort="8443" />
72     <!-- A "Connector" using the shared thread pool-->
73     <!--
74     <Connector executor="tomcatThreadPool"
75         port="8080" protocol="HTTP/1.1"
76         connectionTimeout="20000"
77         redirectPort="8443" />
78     -->
79     <!-- Define a SSL/TLS HTTP/1.1 Connector on port 8443
80     This connector uses the NIO implementation that requires the JSSE
81     style configuration. When using the APR/native implementation, the
82     OpenSSL style configuration is required as described in the APR/native
83     documentation -->
84
85     <Connector port="8443" protocol="org.apache.coyote.http11.Http11NioProtocol"
86         maxThreads="150" SSLEnabled="true" scheme="https" secure="true"
87         keystoreFile="c:\Tomcat\keystore\wildcard_waternet_dhigroup_com.pfx" keystorePass="
88         clientAuth="false" sslProtocol="TLS" />
89
90

```

3. Restart tomcat service

6. Firewall blocks Geoserver

MIKE WaterNet Advisor Version 2020.07.10 contains improved Geoserver security.

1. Change the geoserver url in index.html that is used by the frontend of the application
C:/interpub/wwwroot/waternet/index.html or C:/interpub/wwwroot/index.html
2. In index.html add `use-ws-auth-headers=""`

```
<div id="main">
  <dhi-muwa-app analyses-file="analyses.json" use-wd="" update-01-applied="" api-url="/waternet_webapi" geoserver-url="/waternet_webapi/api/geoserver/" layers-file="layers.json" use-ws-auth-headers=""
  use-two-phase-auth="" default-language="en-US" available-languages="["en-US","zh-CN","cs-CZ","ja-JP","de-DE","pl-PL","pt-PT","es-ES","hu-HU","fr-FR"]" licence-check-interval="120" online-check-interval="5" local-osm-url="" local-osm-extent="[13147232, 2359473, 13684638, 3073965]" local-osm-resolution="[4,
  2500]"*
</dhi-muwa-app>
</div>
```


```
<div id="main">
  <dhi-muwa-app analyses-file="analyses.json" use-wd="" update-01-applied="" api-url="/waternet_webapi" geoserver-url="/waternet_webapi/api/geoserver/" layers-file="layers.json" use-ws-auth-headers=""
  use-two-phase-auth="" default-language="en-US" available-languages="["en-US","zh-CN","cs-CZ","ja-JP","de-DE","pl-PL","pt-PT","es-ES","hu-HU","fr-FR"]" licence-check-interval="120" online-check-interval="5" local-osm-url="" local-osm-extent="[13147232, 2359473, 13684638, 3073965]" local-osm-resolution="[4,
  2500]"*
</dhi-muwa-app>
</div>
```

```
geoserver-url="/waternet_webapi/api/geoserver/" layers-file="layers.json" use-ws-auth-headers=""
available-languages="["en-US","zh-CN","cs-CZ","ja-JP","de-DE","pl-PL","pt-PT","es-ES","hu-HU","fr-FR"]" licence-check-interval="120" online-check-interval="5" local-osm-url="" local-osm-extent="[13147232, 2359473, 13684638, 3073965]" local-osm-resolution="[4,
  2500]"*
</dhi-muwa-app>
</div>
```

See the entry below:

```
<div id="main">: geoserver-url="/waternet_webapi/api/geoserver/" use-ws-auth-headers=""
```

3. Change the geoserver url in web.config that is used by the backend of the application
c:/interpub/wwwroot/waternet_webapi/Web.config

 The linked image cannot be displayed. The file may have been moved, renamed, or deleted. Verify that the link points to the correct file and location.

```
<add key="geoserverUrl" value="http://localhost:8080/geoserver/" />
```

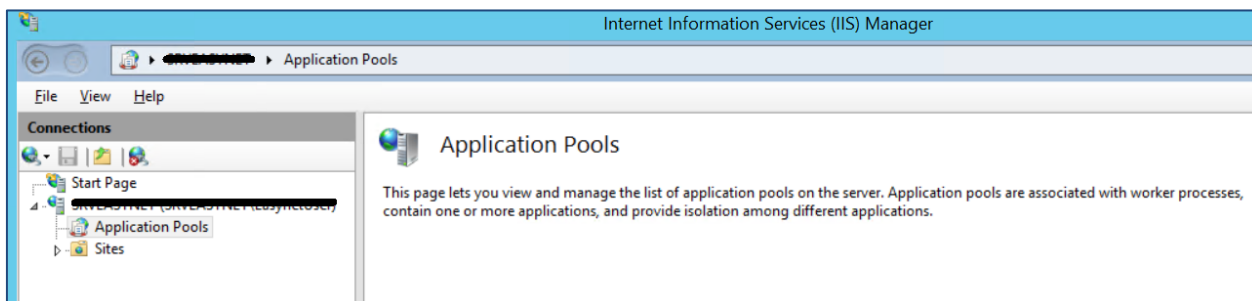
4. Block the port 8080 on firewall, check that it is not reachable on a blocked port and check that it is working on new port

7. Cannot open the login page or run simulations, Windows password changed

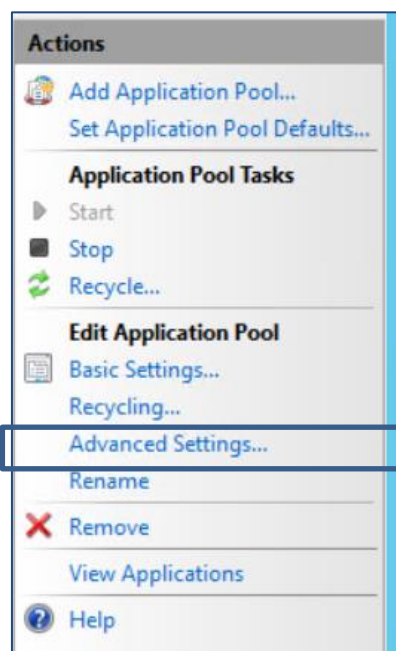
In case that there was a change to the password on the machine and user profile where the application is running, it is necessary to perform the following steps.

1. IIS (Internet Information Services)

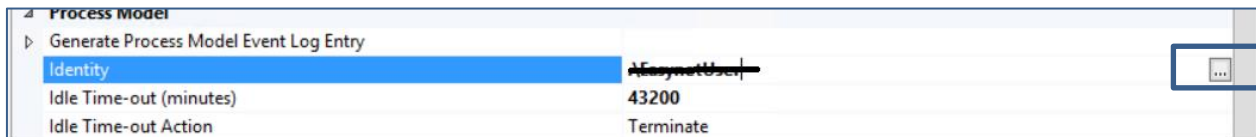
Open ISS and select Application Pool

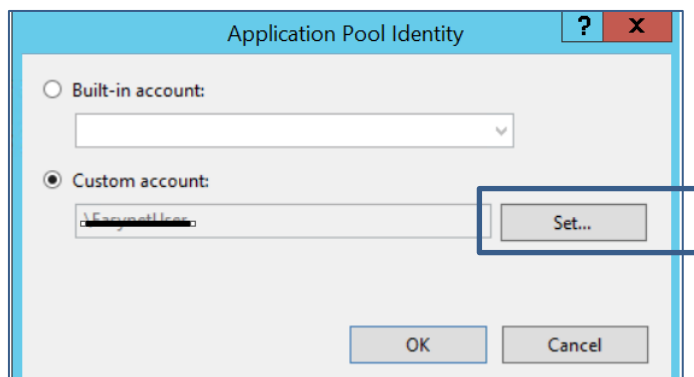


From Application Pool, select the “WaterNet” and “Advanced settings”

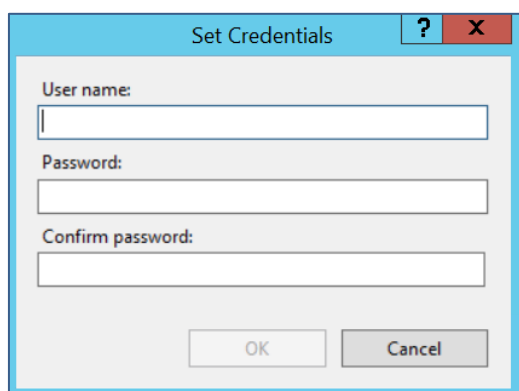


Select “Identity” and click the “...” on the right hand side to change the identity settings



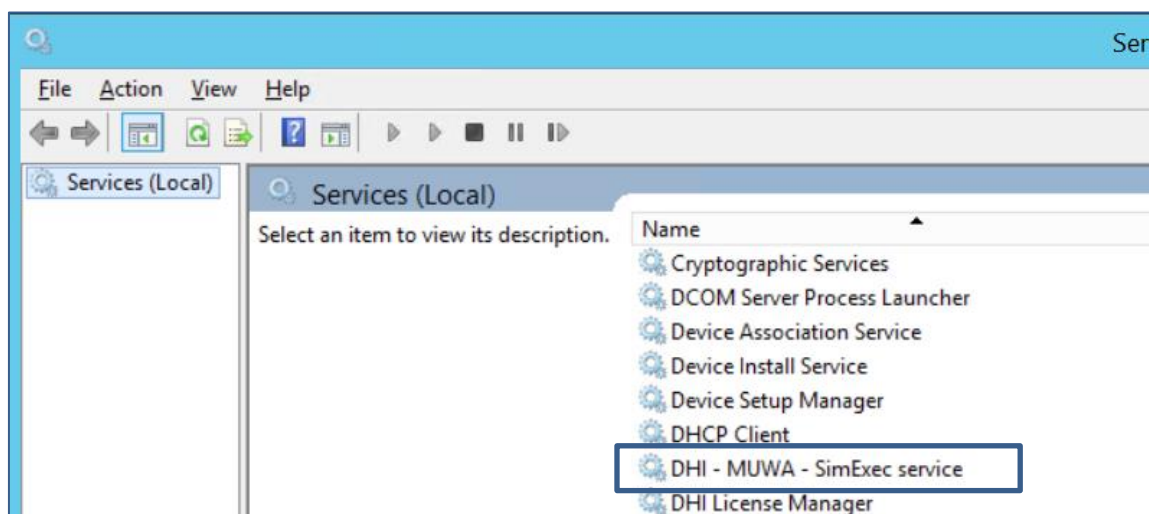


Click "Set" and specify the *username* and the *password*.

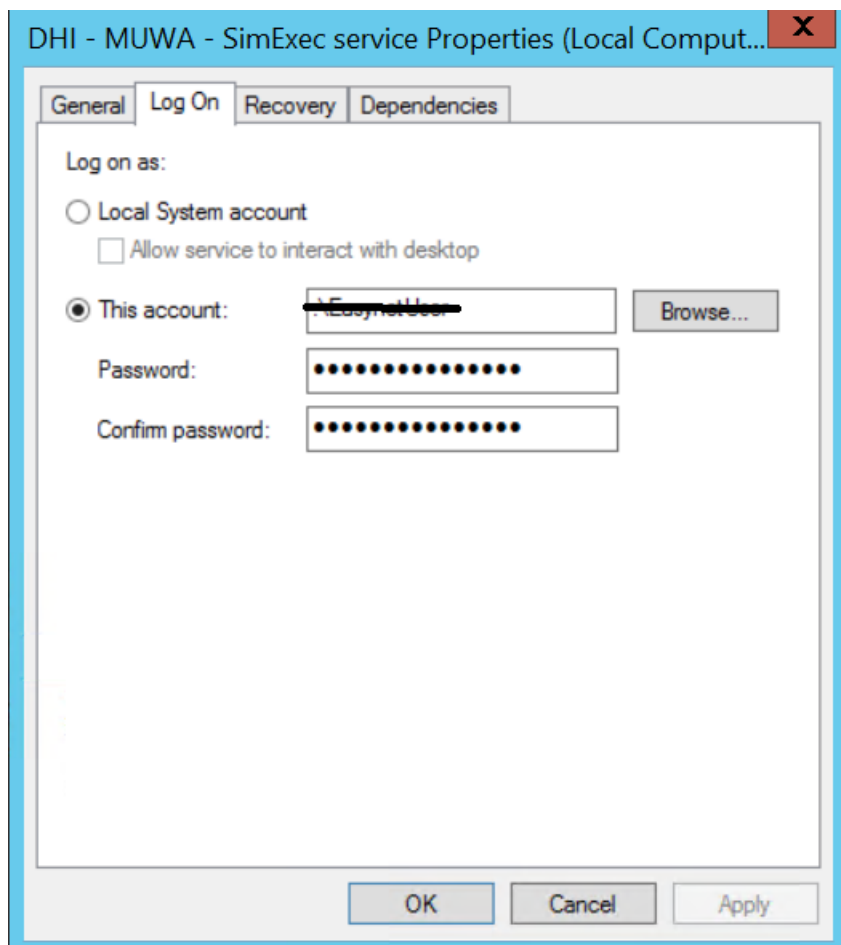


2. Services

Open Services and select "DHI MUWA – SimExec service"



Select Properties - Log-on and define the new user name and the password.



Next, *restart* the service.

