

DHI License Management

User Guide





PLEASE NOTE

COPYRIGHT

This document refers to proprietary computer software which is protected by copyright. All rights are reserved. Copying or other reproduction of this manual or the related programs is prohibited without prior written consent of DHI A/S (hereinafter referred to as "DHI"). For details please refer to your 'DHI Software Licence Agreement'.

LIMITED LIABILITY

The liability of DHI is limited as specified in your DHI Software Licence Agreement:

In no event shall DHI or its representatives (agents and suppliers) be liable for any damages whatsoever including, without limitation, special, indirect, incidental or consequential damages or damages for loss of business profits or savings, business interruption, loss of business information or other pecuniary loss arising in connection with the Agreement, e.g. out of Licensee's use of or the inability to use the Software, even if DHI has been advised of the possibility of such damages.

This limitation shall apply to claims of personal injury to the extent permitted by law. Some jurisdictions do not allow the exclusion or limitation of liability for consequential, special, indirect, incidental damages and, accordingly, some portions of these limitations may not apply.

Notwithstanding the above, DHI's total liability (whether in contract, tort, including negligence, or otherwise) under or in connection with the Agreement shall in aggregate during the term not exceed the lesser of EUR 10.000 or the fees paid by Licensee under the Agreement during the 12 months' period previous to the event giving rise to a claim.

Licensee acknowledge that the liability limitations and exclusions set out in the Agreement reflect the allocation of risk negotiated and agreed by the parties and that DHI would not enter into the Agreement without these limitations and exclusions on its liability. These limitations and exclusions will apply notwithstanding any failure of essential purpose of any limited remedy.





CONTENTS

1	Introduction	7
1.1	The DHI License System	7
2	Installing the DHI License Management tool	9
3	User Interface	11
4	How-To	13
4.1	How do I setup a license server? import a license file?	13
4.2	How do I connect to a license service?	14
4.3	How do I list the available licenses?	16
4.4	How to enable the Advanced User Interface	17
4.5	How do I see which licenses are in use and by who?	18
4.6	How do I release a license	18
4.7	How do I start and stop the license service?	19
4.8	How can I get a log of license system related events?	20
5	License Administrator Credentials	23
	Index	25





1 Introduction

The DHI License Management application is a tool for managing your DHI software licenses. It comes in two versions:

- The complete version which is only required to install in case you are activating the license issued on a hardware key (dongle), and
- The studio version is installed automatically along with any MIKE Powered by DHI products.

Managing the licenses includes

- importing license files into the license service
- connecting your DHI software applications to a license service
- identifying available licenses
- viewing which licenses are in use by whom

This user guide will describe the license configuration as Network and local mode. If you have an internet license please refer to a separate document as 'Internet license user guide'.

1.1 The DHI License System

The DHI License Management system consists of a license server application (a Windows service) that can be installed on a corporate server, a user's local workstation or on a DHI server. The type of mode available to your organization depends on the sales agreement between your organization and DHI.

These three deployment modes are named as:

- Network mode
- Local mode and
- Internet mode

Licenses for MIKE Product (except Internet) are provided in a text file with the name xxx.dhlic2. The license file must be imported into the tool before you can make use of your MIKE product in the licensed mode - either on a server or on your local PC.

Internet mode does not require a separate installation of the DHI License Management tool. The Studio version installed with the software will be sufficient for connecting to the Internet License server.

The MIKE Software applications connect to the license server while running for verifying free licenses is called requesting a license - and if successful, the



license becomes "taken". When the application is shut down, it releases the taken license(s) and make them available again.

A MIKE Software application may require multiple licenses (known as license modules) to run; it depends on the features or modules required for carrying out the requested application processing.

The DHI License Management tool can be used for viewing the modules your organization has available together with the number of seats (i.e., the number of licenses for a given module that can be taken at any given time).



2 Installing the DHI License Management tool

The tool comes as a separate download for each version. See Table 2.1 on when and how to install the complete tool. If you are running MIKE product from a local PC with a hardware key, it is required to have 'DHI license management tool' installed together with MIKE software.

For Network mode, the tool must be installed on a server only.

Table 2.1 Options related to licensing

	Hardware key	Installing DHI License manager required
Local mode	Yes	Yes
Network mode (recommended)	Yes (on server only)	Yes (on server only)
	No (on client PC)	No (on client PC)
Internet mode	No	No

It is strongly recommended to install the DHI License Management tool as administrator. After unzipping the file make sure to right-click the setup.exe file and choose 'Run as administrator'.

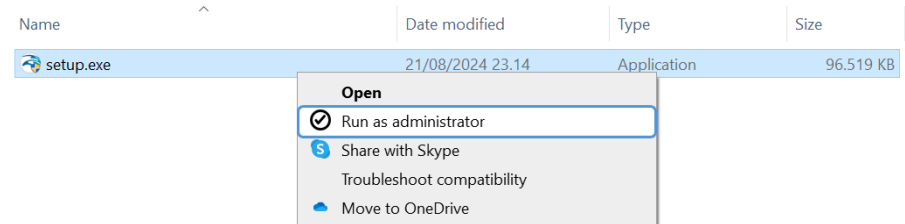


Figure 2.1 Installing using 'Run as administrator'

In case you try to connect to localhost and the DHI License Management has not been installed properly, the following error message will appear:

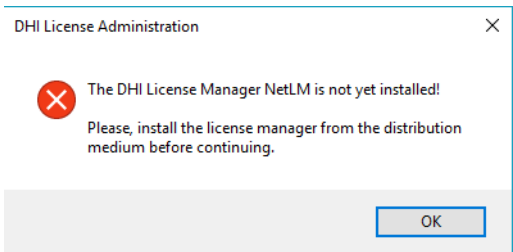


Figure 2.2 Error message from DHI License Management





3 User Interface

The DHI License Management tool user interface appears as shown in Figure 3.1 below.

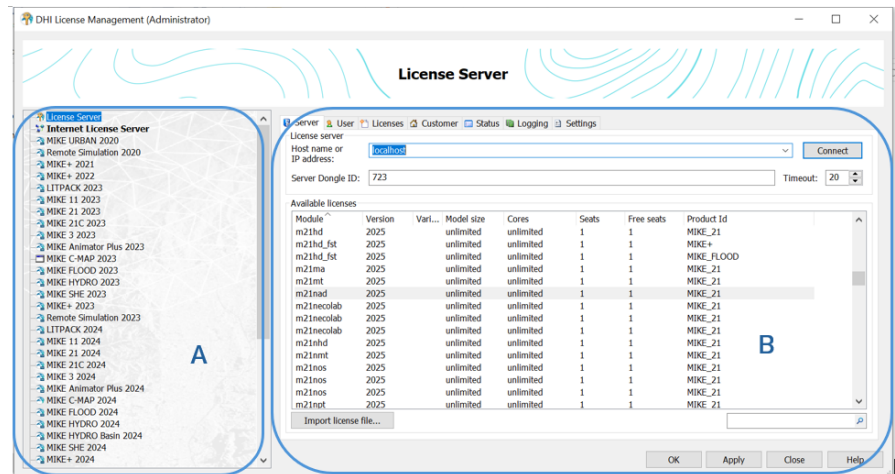


Figure 3.1 The DHI License Management tool user interface

The left panel (A) shows a navigation menu - here you will also be able to see which MIKE software has been installed on this PC, if applicable.

Selecting **"All licenses"** will enable you to see all the license modules (B) that are available to you with the installed license file. If you select a product, the licenses available for the chosen product will be shown.

See the "How-To" sections in Chapter 4 for learning how to use the tool.





4 How-To

This section explains how to use the DHI License Management tool for managing your DHI licenses and for connecting to a license server. In case you are using an internet license, please refer to the Internet license user guide.

4.1 How do I setup a license server? import a license file?

In network mode all users share a pool of licenses activated on a centralized license server in the same organization, e.g. as soon a license is released by a user it is available and ready to be used by another user on the same network.

To utilize the configuration as a license server more administrative right may require.

Before you start, make sure to insert the dongle into the server and the license .xxxdhilic2 file is saved locally.

The license is imported by selecting '**License Server**' at the top of (A). See Figure 4.1 below, - the '**Available Licenses**' area is empty.

Then:

- Choose **Localhost** as Host name
- Click the "**Import license file...**"
- Follow the screen instruction to browse to the supplied xxx.dhilic2 license file

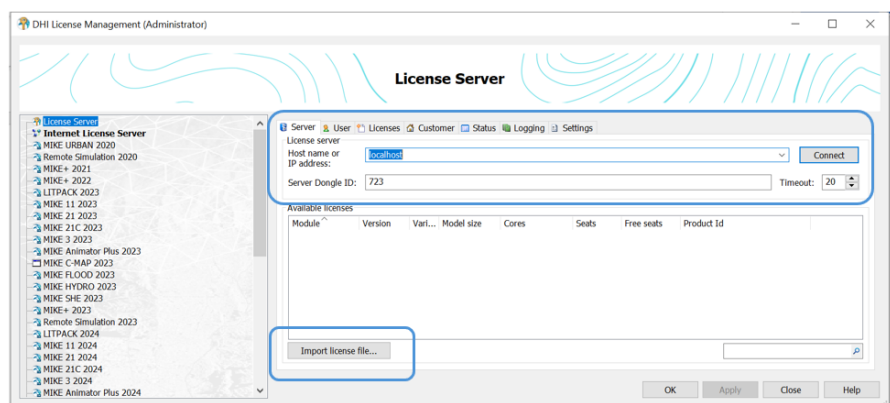


Figure 4.1 Importing license file



If you are working on a PC with the dongle connected and the software installed, you are now ready to use the software.

Please be aware of the following conditions:

- You can import a license file to a local license server or a remote one, but
 - If you import to a local license server and do not have Windows Administrator rights, you will be prompted for License Administrator Credentials (see chapter 5)
 - If you import to a remote license server, you will always be prompted for License Administrator Credentials

4.2 How do I connect to a license service?

Based on the type of licenses you have acquired within your organization the connection procedure may varies:

1. License service within your organisation (network based)
2. Internet based license please refer to a separate user guide

License service within your organisation

Your DHI software needs access to a license service for requesting the required license modules, see Figure 4.2.

- Select the "**License Server**" node in the left panel
- In the right panel connect to the license server in your company network (You can write the server's name or enter the IP address)
- Click Connect

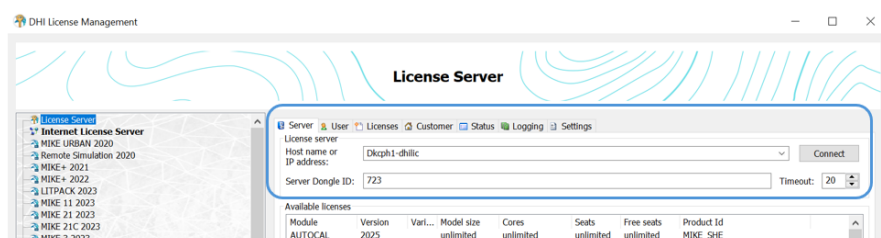


Figure 4.2 Connecting to License server

Your organisation's dongle number will now be shown in the "Server Dongle ID" field and the available modules will be displayed.



How do I connect to a license service?

Internet based license please refer to a separate user guide

On your local PC use the License Administration application for selecting the Internet License server option, see Figure 4.3.

- Select the "Internet License Server" in the left panel
- In the right panel, enter your Internet license credential with a User name and a password or check the 'use MIKE Cloud login'.
- Click Connect
- The available licenses will be displayed
- Click Apply

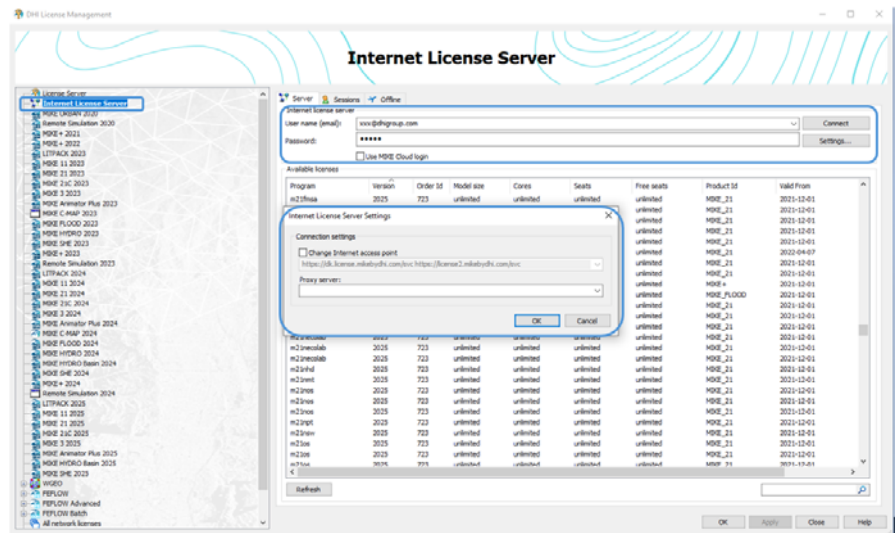


Figure 4.3 Internet license server

A couple of additional settings are available for internet license:

- **The Internet access point:** By default this is set by the installation and should only be modified if instructed by the software provider.
- If your organization utilizes a proxy server for accessing the Internet, please enter the address in the field provided.

A more detailed description of the use and functionality of the Internet based license is included in the **MIKE Internet License User Guide** that can be accessed from the **DHI License Management Documentation Index**.



4.3 How do I list the available licenses?

Once the license is activated (applies to both dongle based license or internet license) you can see the available licenses in the right area panel (B), see Figure 4.4.

If you use a network mode license, select “**License Server**” to see the available licenses. For internet license, select “**Internet License Server**”. If you select a product, you will see the licenses that relate to the selected product.

Please note that not all products or license types have this available.

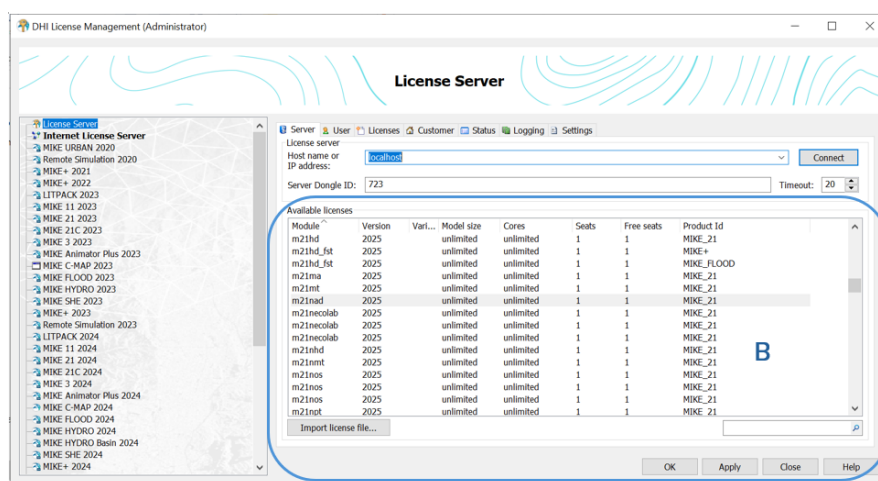


Figure 4.4 List of available licenses

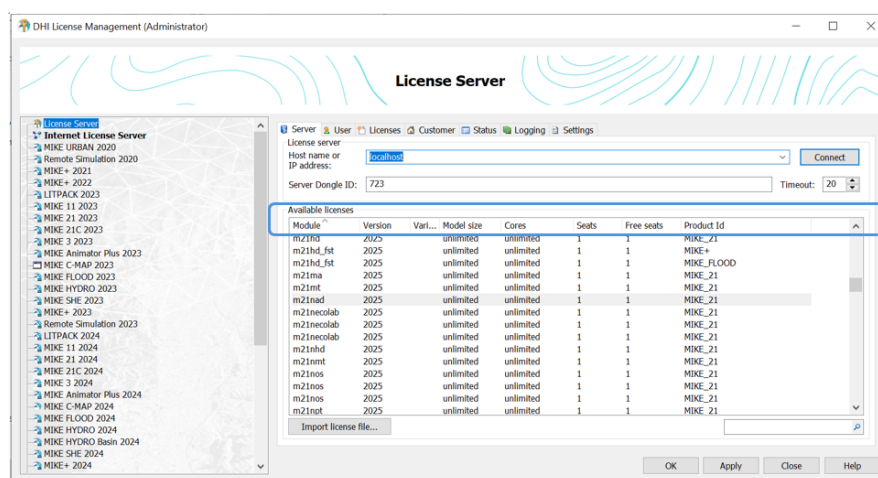


Figure 4.5 List of licenses



The list of available licenses shows the license information including:

- Program name e.g. licensed module name for a specific product
- Model size e.g. the limitation on the number of nodes
- Seats and available seats meaning how many seats were licensed and how many seats are in active use
- Version, e.g. the licensed version

If you have configured the License Administration tool for running with the Advanced User Interface, you can see the details of a specific license by selecting the license in the Available list and then clicking the License tab, see Figure 4.6.

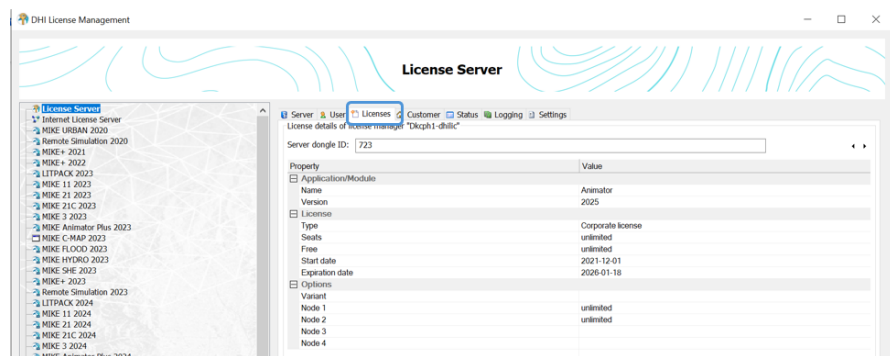


Figure 4.6 License information in the Advanced User Interface

4.4 How to enable the Advanced User Interface

It is possible to enable the advance User Interface under left panel '**Local settings**' as shown in Figure 4.7.

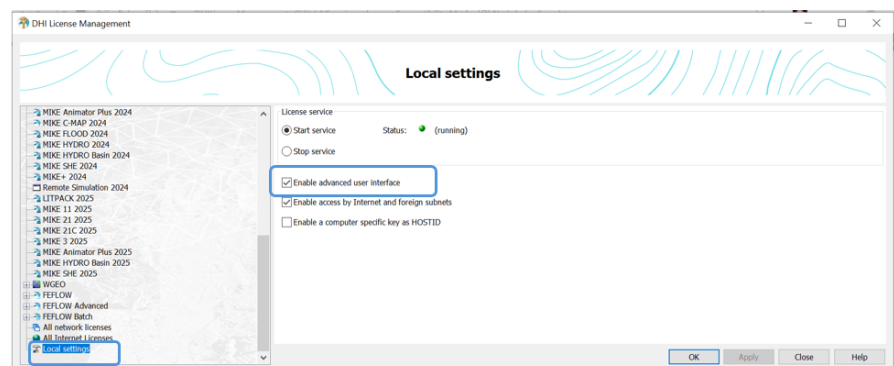


Figure 4.7 Enable the advanced user interface



How do I see which licenses are in use and by who?

You can see the licenses that are in active use and by whom by selecting the User tab from either the "License Server" view or a product specific view.

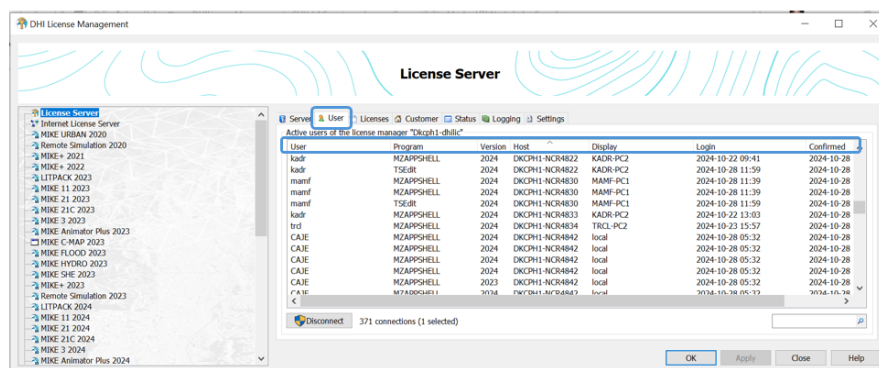


Figure 4.8 List of active users

The User tab shows the licenses that are in active use with information about who is using the license, when the session was started and on which PC.

4.6 How do I release a license

In some situations, it may be necessary to remove a user from using certain license modules.

You can disconnect a user by selecting the session(s) in question and clicking disconnect. Then you will be prompted to enter administrator credentials. See Figure 4.9. Note the administrator right on the server is required.

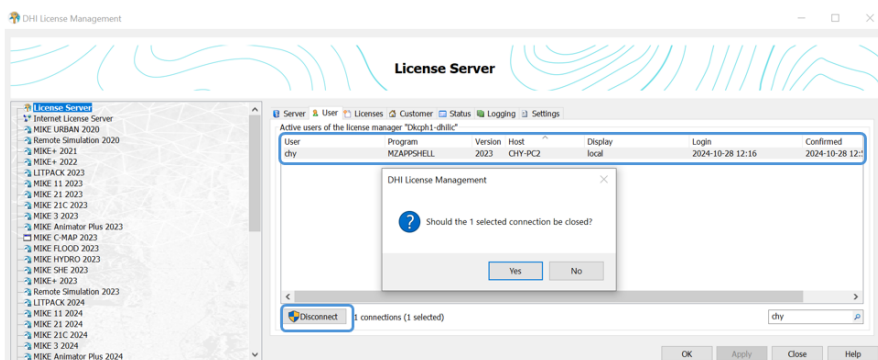


Figure 4.9 Disconnecting license



How do I start and stop the license service?

4.7 How do I start and stop the license service?

You can stop the license service from the '**License Server**' view if you have the **Advanced User Interface** activated, see Figure 4.10.

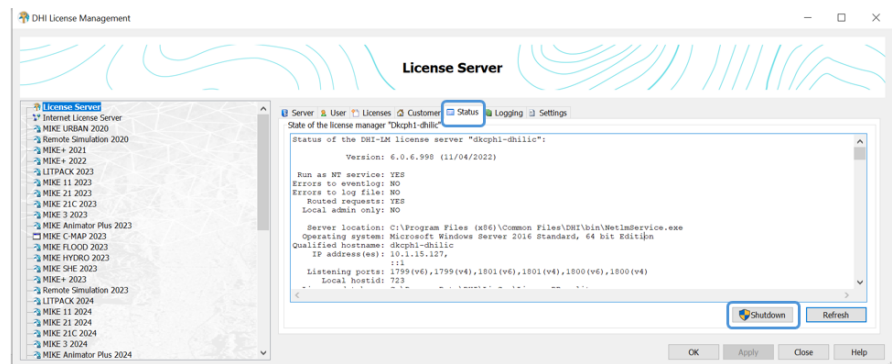


Figure 4.10 Stop license service button in Status User Interface

Note: You need to have license administrator rights to 'shutdown' a running license service remotely. You will be prompted to enter administrator credentials as shown in Figure 4.11.

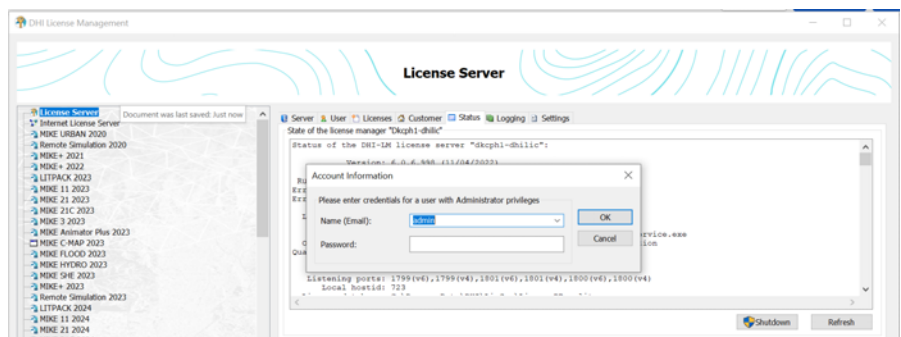


Figure 4.11 Entering administrator credentials to shut down a license service

You cannot start a license service remotely; this can only be done from the computer where the license service is installed.

However, you can start a locally installed license service from the Local Settings view on the computer, see Figure 4.12.

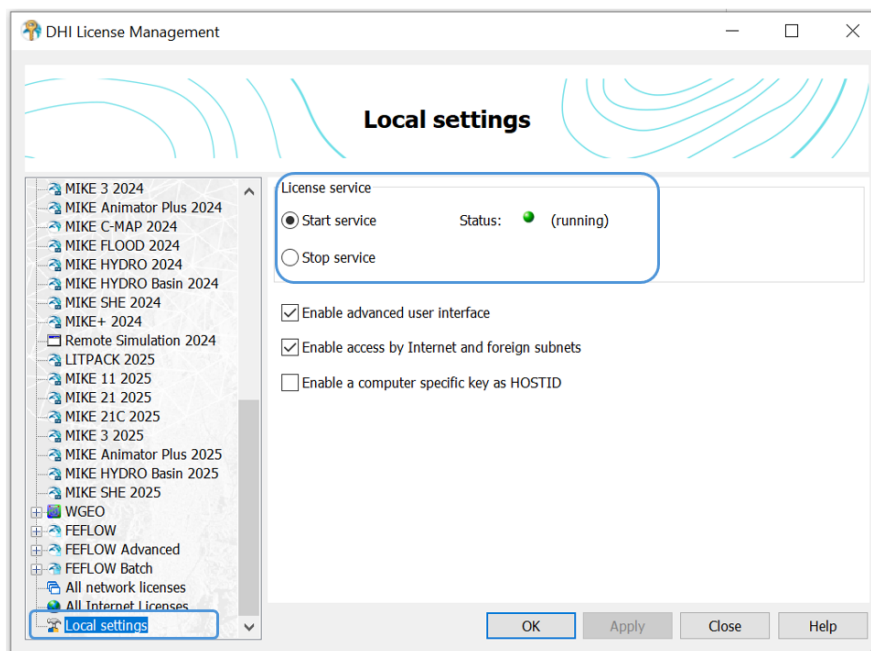


Figure 4.12 Starting local license server

4.8 How can I get a log of license system related events?

You can get a log of the license system events from the 'License Server' Logging tab (Advanced User Interface needed), see Figure 4.13. You can also clear logs from this page.

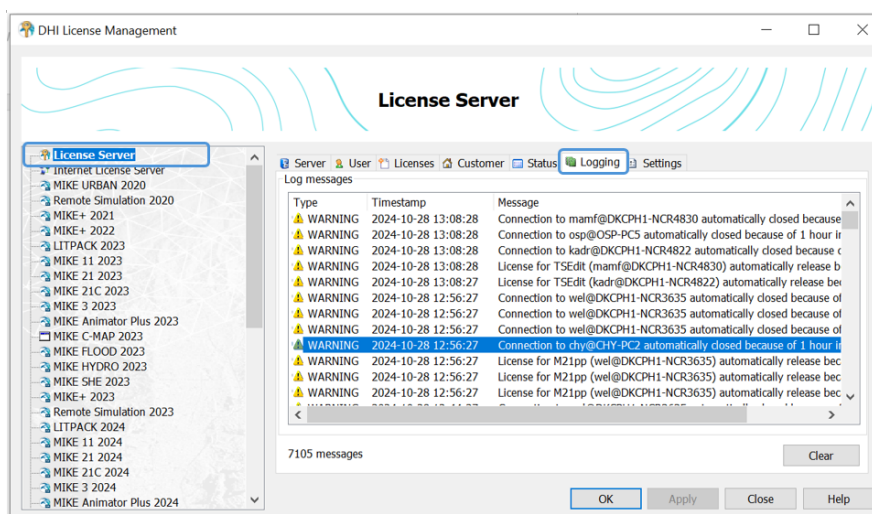


Figure 4.13 Log messages in User Interface



How can I get a log of license system related events?

The log level - i.e. the amount and type of logging - can be configured on the **Settings** tab, see Figure 4.14. The log level can be one of the following:

- **Error** - logs license system errors including failed license requests
 - **Warning** - includes additional warning log messages
 - **Info** - includes all requests including successfully honored license requests
 - **Debug** - includes a large number of internal log messages.
- NB:** You should only use this level in case of license system malfunctioning and only for a short period of time as it produces a very large number of log messages

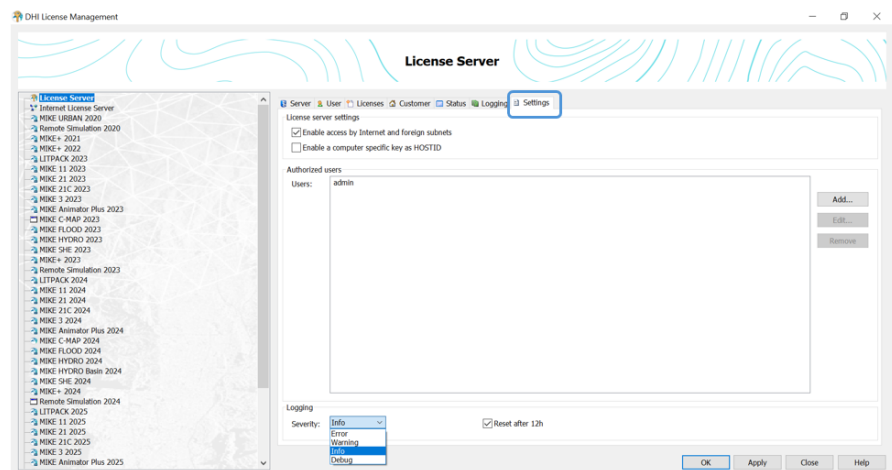


Figure 4.14 Editing log level from Settings tab





5 License Administrator Credentials

You need 'License Administrator Credentials' for importing a license file on a server remotely, for stopping and starting the license server and for changing log levels, see Figure 5.1.

License administrator credentials are created by:

- Clicking on Advanced user interface on the Local Settings page
- Clicking the Settings tab on the "License Server" page
- Clicking the Add button and creating a new user with Administrator privileges (Role)

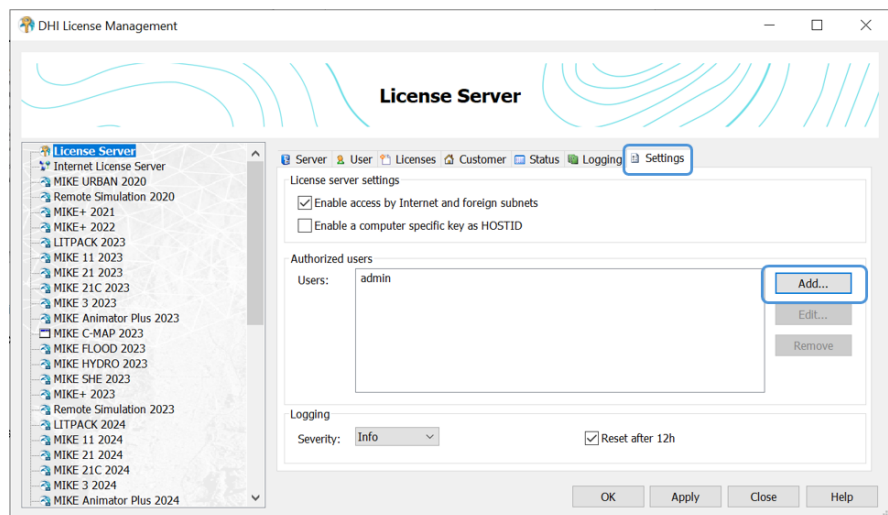


Figure 5.1 Creating License Administrator credentials

By default, the license system includes one user with Administrator credentials as:

Name: 'admin'

Password: 'licadmin'

NB: You should change this password to a personal one once the license system is initialized.





INDEX



A

Advanced User Interface	17
Available licenses	16

D

Dongle	13
Dongle number	14

I

Internet License	15
Internet license	13

L

License service	14
---------------------------	----