



MIKE Zero

Installation Guide



DHI A/S Head Office

Agern Allé 5
DK-2970 Hørsholm
Denmark

+45 4516 9200 Telephone

+45 4516 9292 Telefax

mike@dhigroup.com

www.mikepoweredbydhi.com

CONTENTS

MIKE Zero Installation Guide

1	Introduction	1
2	Installation	1

1 Introduction

This installation guide describes the MIKE Zero installation process. MIKE Zero is the common user interface for pre- and postprocessing of data and models related to many of the MIKE Powered by DHI products for hydraulic and hydrological modelling.

MIKE Zero Products
LITPACK
MIKE 21
MIKE 21C
MIKE 3
MIKE SHE
MIKE Animator Plus

Figure 1 MIKE Powered by DHI products within the MIKE Zero user interface

MIKE Zero is the framework for the MIKE Powered by DHI products listed in Figure 1, and you can select to install any of these from the DHI Download Center from this link: <https://support.dhigroup.com/download/MIKE-latest/>. An installation video tutorial can be found here: [KA-01000 - DHI Customer Care Portal \(dhigroup.com\)](#).

The download packages for each of the MIKE Zero products are identical and it is your license purchase agreement with DHI that ultimately determines which computational engines you can use in full. In case your license does not include a certain product, you will receive a DEMO mode message when attempting to make use of that product.

2 Installation

To install the MIKE Zero framework, follow the steps below:

1. Unzip the downloaded archive to a local folder of your choice. Right-click on the MIKE Zero *setup.exe* file and select **Run as Administrator**.

NOTE: It is strongly recommended to install using the **Run as Administrator** command. This temporarily disables the Microsoft Windows User Account Control (UAC) settings and facilitates successful installation and registration of all components MIKE Zero requires completely and correctly.

Once the installation begins, the **Welcome** screen appears. Click **Next** to proceed (see Figure 2).

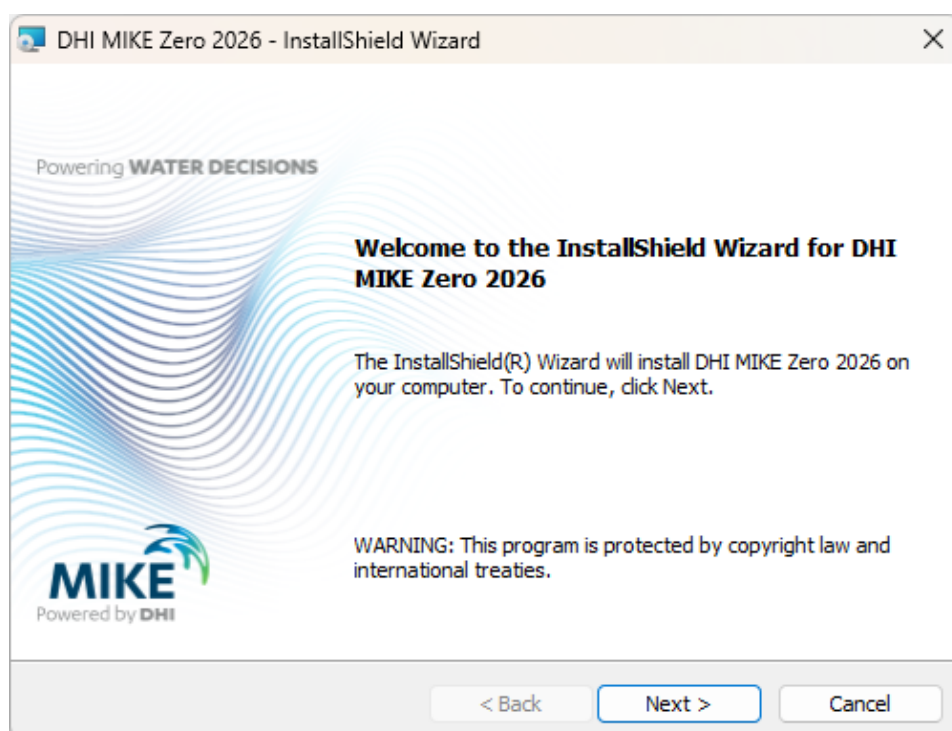


Figure 2 MIKE Zero Welcome screen appears

2. Review and accept the license terms. Please make sure to scroll to the bottom of the agreement, select **I accept the terms...** and click **Next** to continue to the **Custom Setup** dialog (see Figure 3).

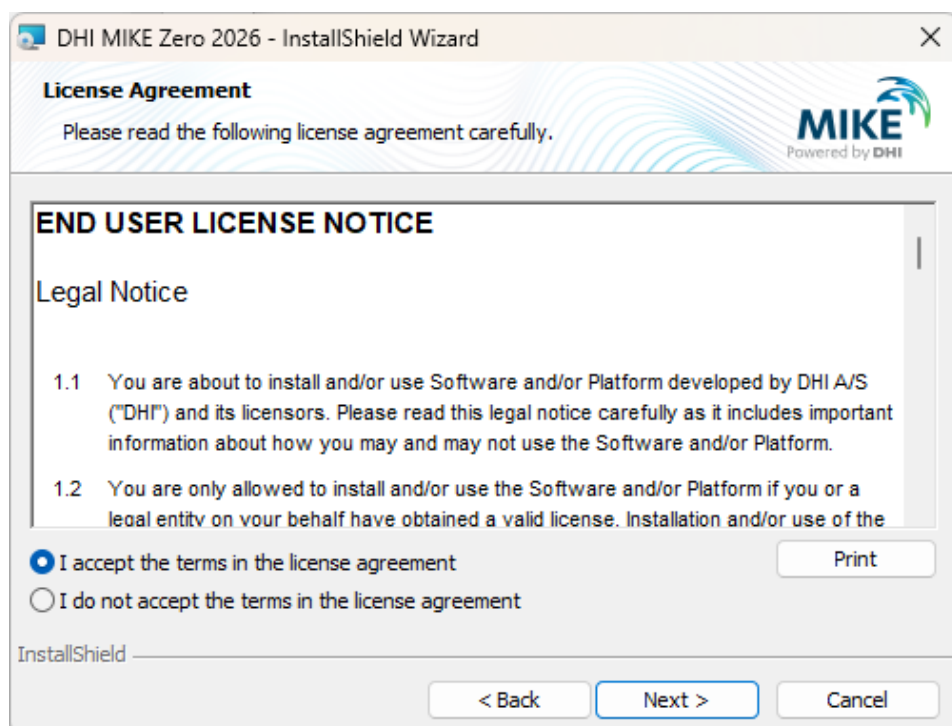


Figure 3 Accept the legal agreement

3. In the **Custom Setup** dialog, you can select specific features to install. However, the default MIKE Zero configuration includes everything required by most users.

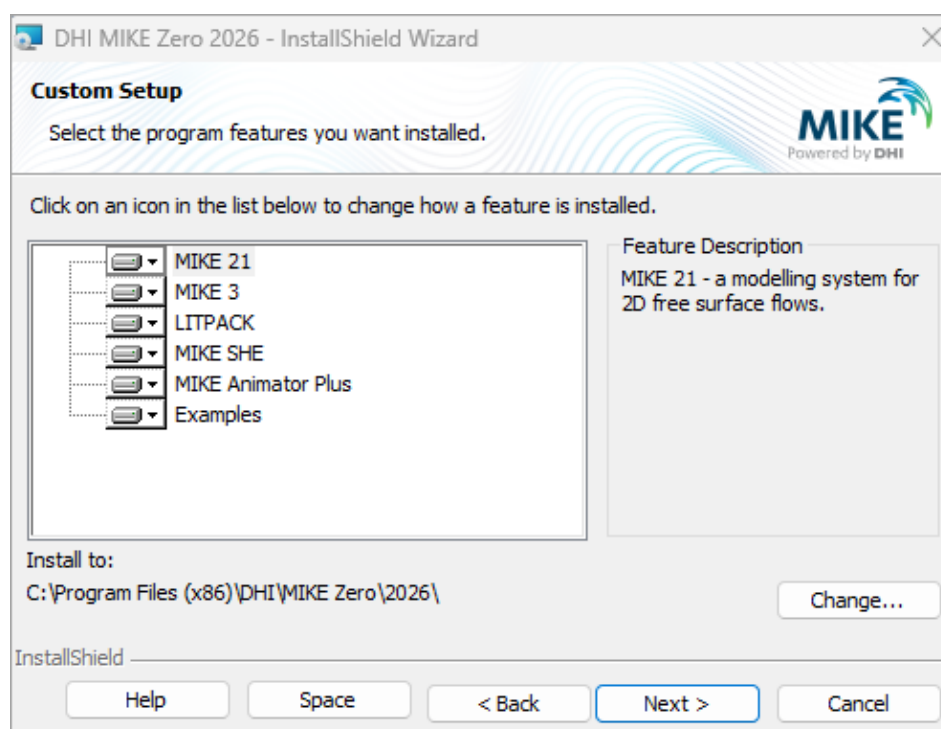


Figure 4 Choose what features to install

By default, the installation includes examples, which require approximately 1 GB of additional disk space. This component is optional. You can deselect it or choose to install it on an alternative storage location, in line with your organization's IT policies (see Figure 5).

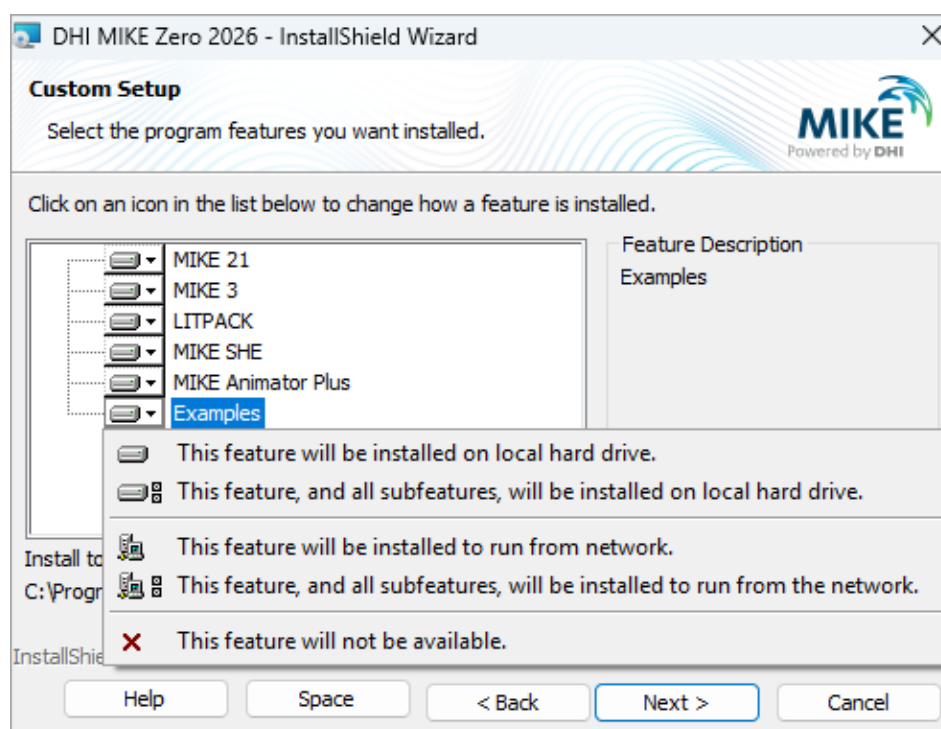


Figure 5 Installing Examples

If you have concerns about storage capacity, click **Space** to view a summary of free space on all available drives. After reviewing the information, click **OK** to return to the main installation wizard (see Figure 6).

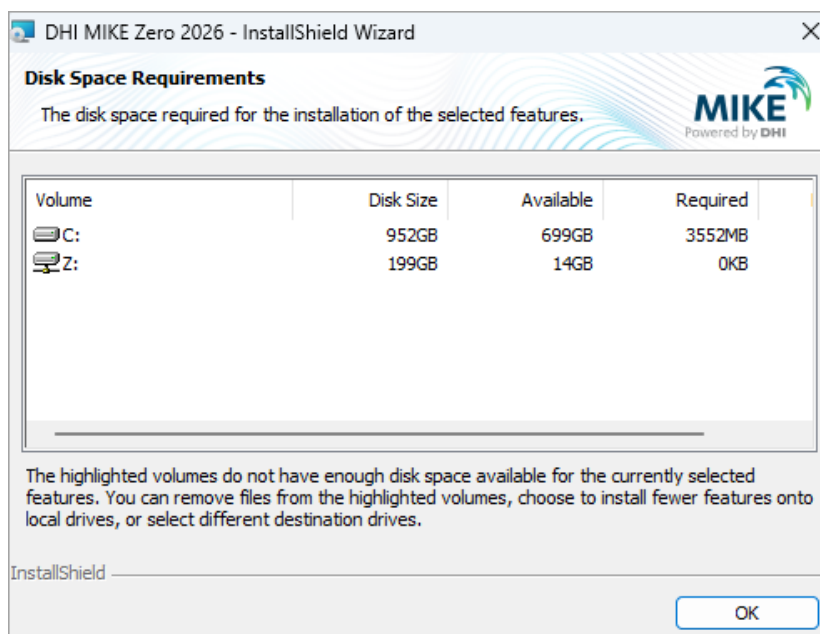


Figure 6 Space requirements

4. Click **Next** to open the **License selection** dialog. Choose the option that corresponds to your license type.

You can modify this selection later using **DHI License Management**, available in the Windows Start menu after the MIKE Zero Installation is complete (see Figure 7).

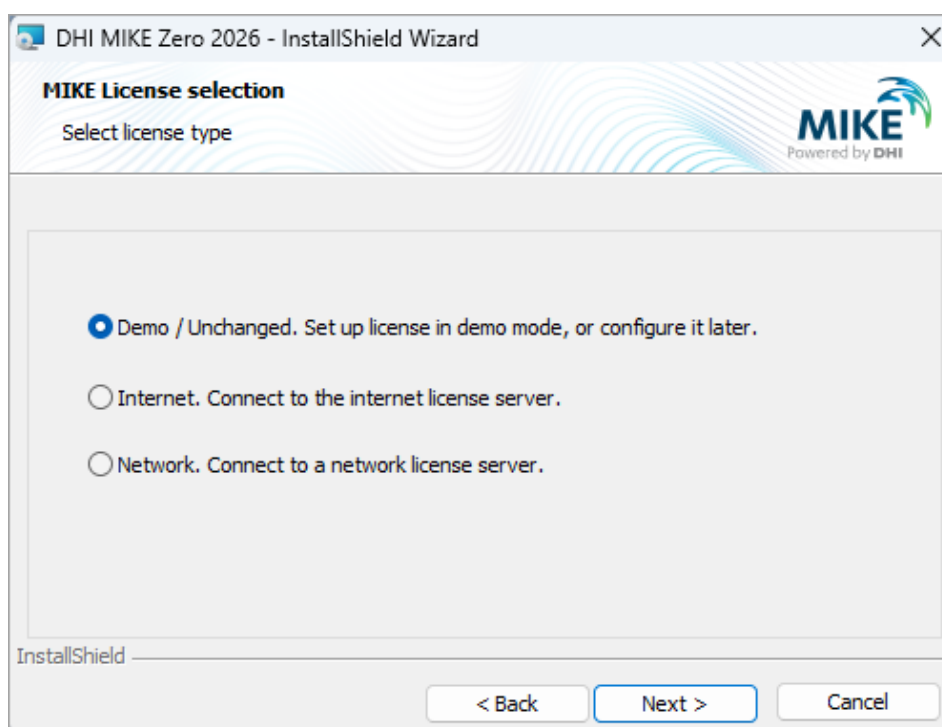


Figure 7 Select license type

Click **Next** to proceed with the installation process.

5. In the **Ready to Install the Program** dialog, click **Install** to begin installing MIKE Zero. Please be aware that the installation may take several minutes to complete (see Figure 8).

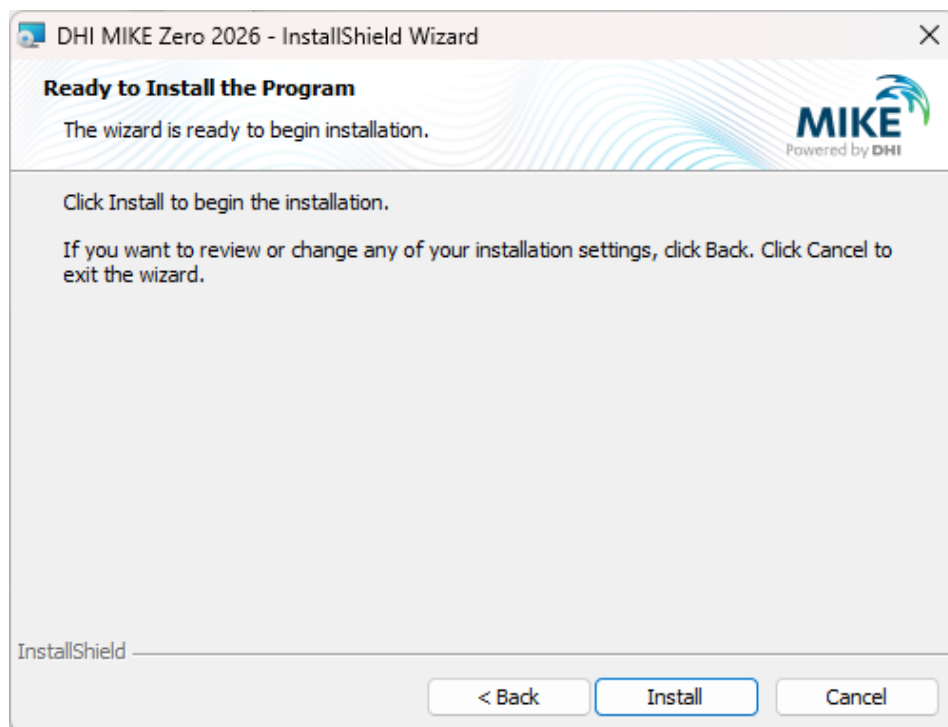


Figure 8 Installation wizard is ready

A progress bar will display the status of the installation, allowing you to monitor its completion (see Figure 9).

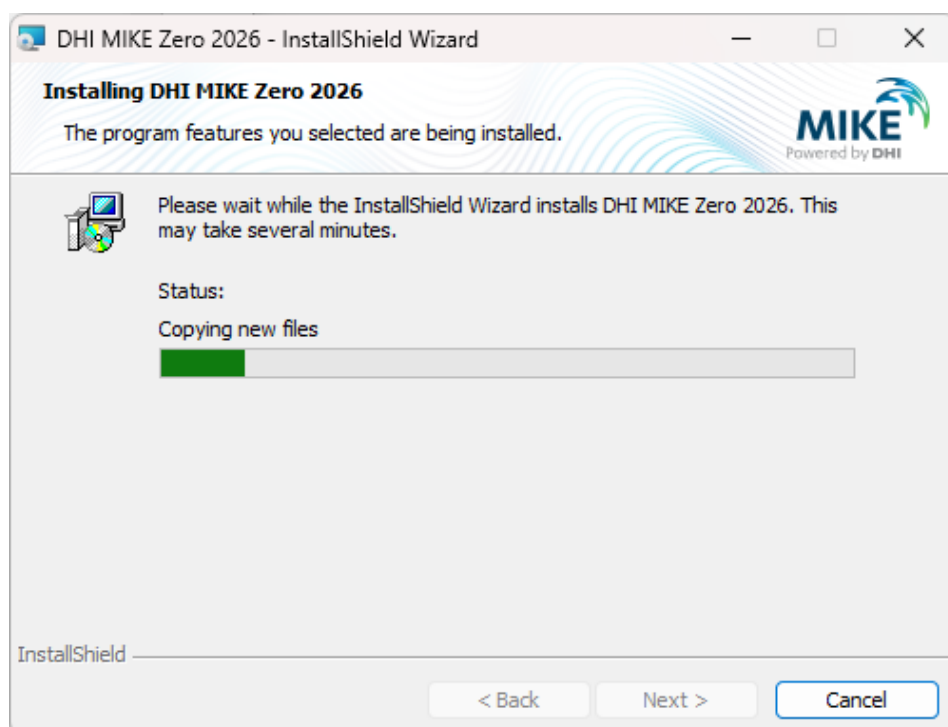


Figure 9 Installation in progress

6. When the confirmation message indicates that the installation is finished, click **Finish** to close the setup wizard (see Figure 10).

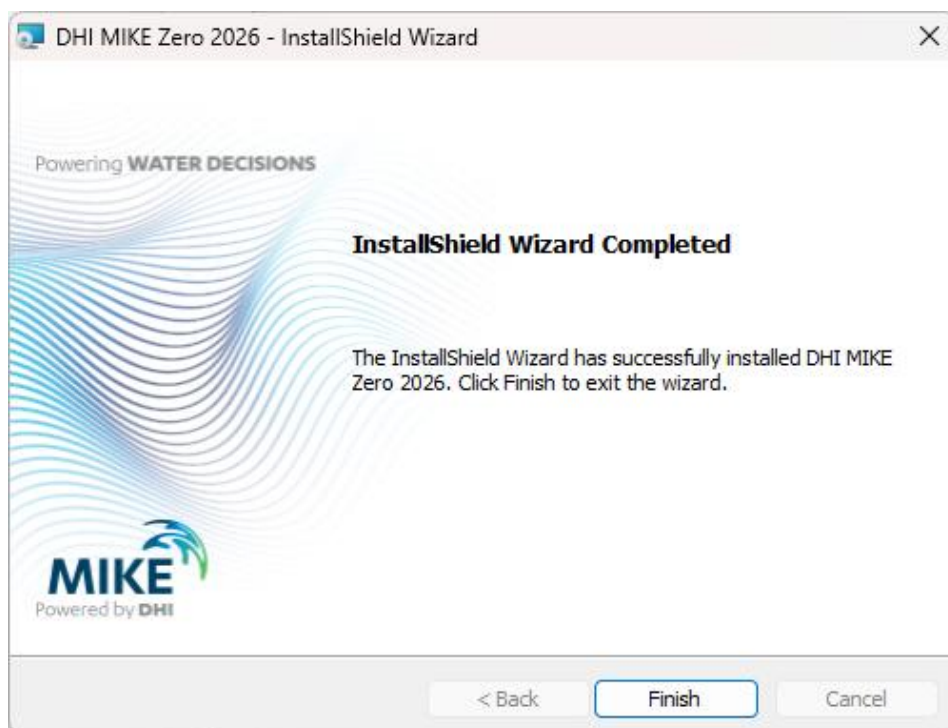


Figure 10 Installation completed

7. Provided that licensing is properly configured, you are now ready to start MIKE Zero. Simply open the Microsoft Windows start menu and write **MIKE Zero**. In case the license is not in place, please review your licensing options and make necessary adjustments in the **DHI License Management tool**.

NOTE: You can find a link to the web resource **MIKE Zero Documentation** from the Help entry in the MIKE Zero shell. Here, you find all related documentation in PDF format, for online reading or download at your convenience.