



MIKE HYDRO Basin

Installation Guide



DHI A/S Head Office

Agern Allé 5
DK-2970 Hørsholm
Denmark

+45 4516 9200 Telephone

mike@dhigroup.com
www.mikepoweredbydhi.com

CONTENTS

MIKE HYDRO Basin Installation Guide

1	Introduction	1
2	Installation	2

1 Introduction

This installation guide describes the MIKE HYDRO Basin installation process. Starting with the 2026 MIKE software release, MIKE HYDRO Basin is a stand-alone application and therefore has a stand-alone installer.

The MIKE HYDRO Basin installer can be downloaded from the DHI Download Center:

<https://support.dhigroup.com/download/MIKE-latest/>.

The installer will also install the optional add-on modules (MIKE 1D rainfall-runoff and DHI ECO Lab). In case your license does not authorize use of either module, you will receive a DEMO mode message when attempting to use the module.

2 Installation

Please follow the instructions below to install MIKE HYDRO Basin.

1. Unzip the downloaded archive in a local folder of your choice, right-click on the MIKE HYDRO Basin *setup.exe* file, and select **Run as Administrator**.

NOTE: It is strongly recommended to install using the **Run as Administrator** command. This action temporarily inactivates the Microsoft Windows User Account Control (UAC) settings and facilitates successful installation and registration of all components completely and correctly.

The installation Welcome screen appears. Click **Next** See Figure 2.

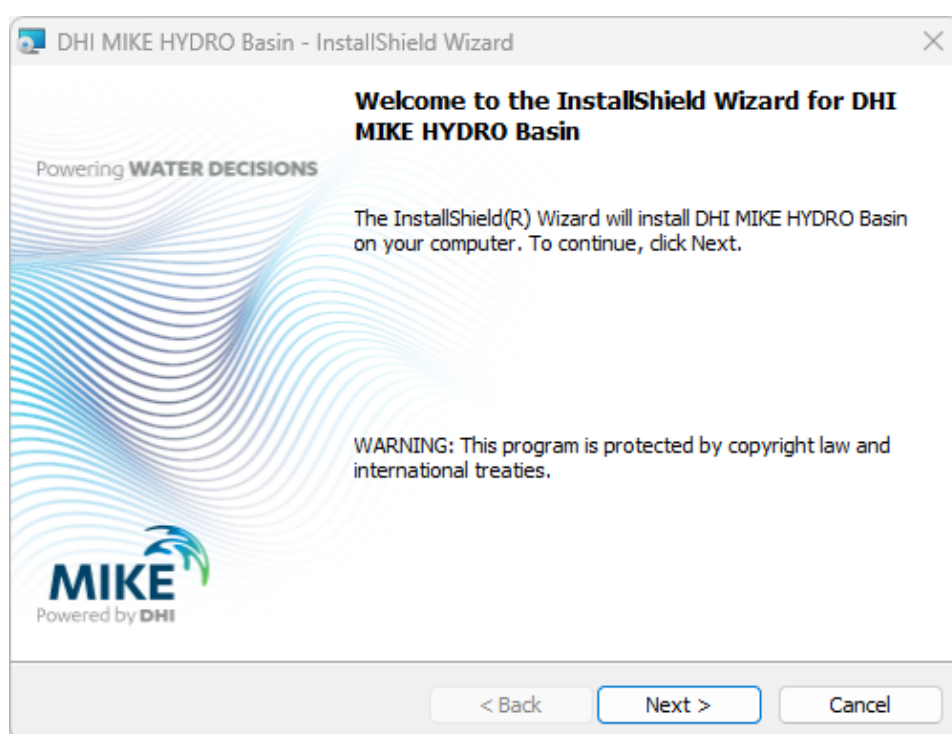


Figure 1 MIKE HYDRO Basin Welcome screen appears

Review and, if acceptable, accept the license terms. Please make sure to scroll all the way down, then click **Next** to proceed to the *Custom Setup* dialog. See Figure 2.

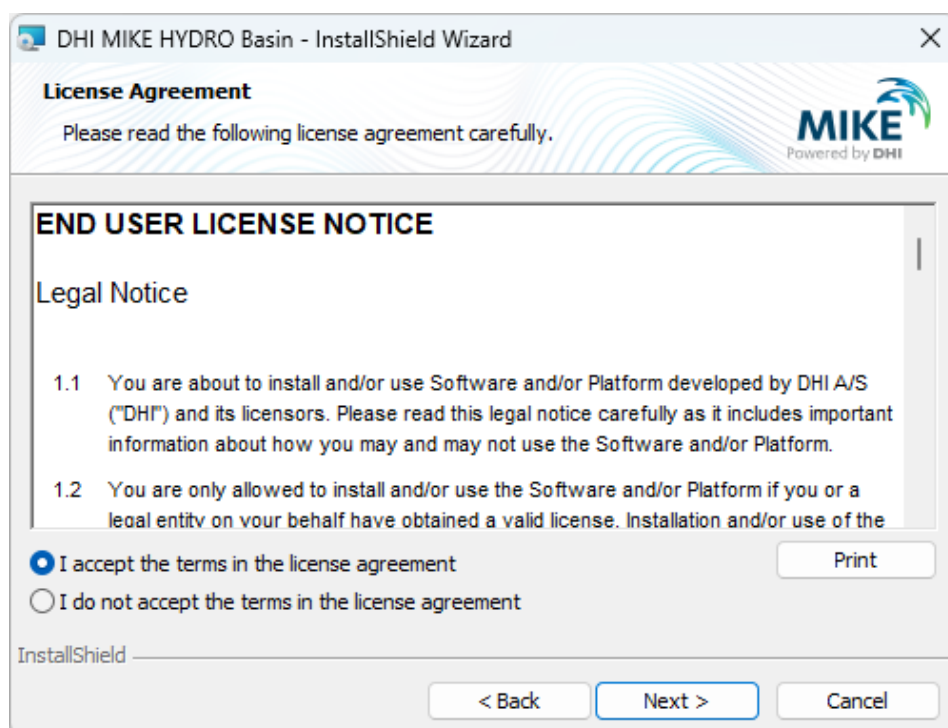


Figure 2 Accept the legal agreement

2. In the **Custom Setup** dialog, you can change file path location of the installation. It's also possible to check the amount of disk space needed. To change the file path, click on the **Change** button. To check the space needed, click on the **Space** button. When finished, click on the **Next** button to continue the installation process. See Figure 3.

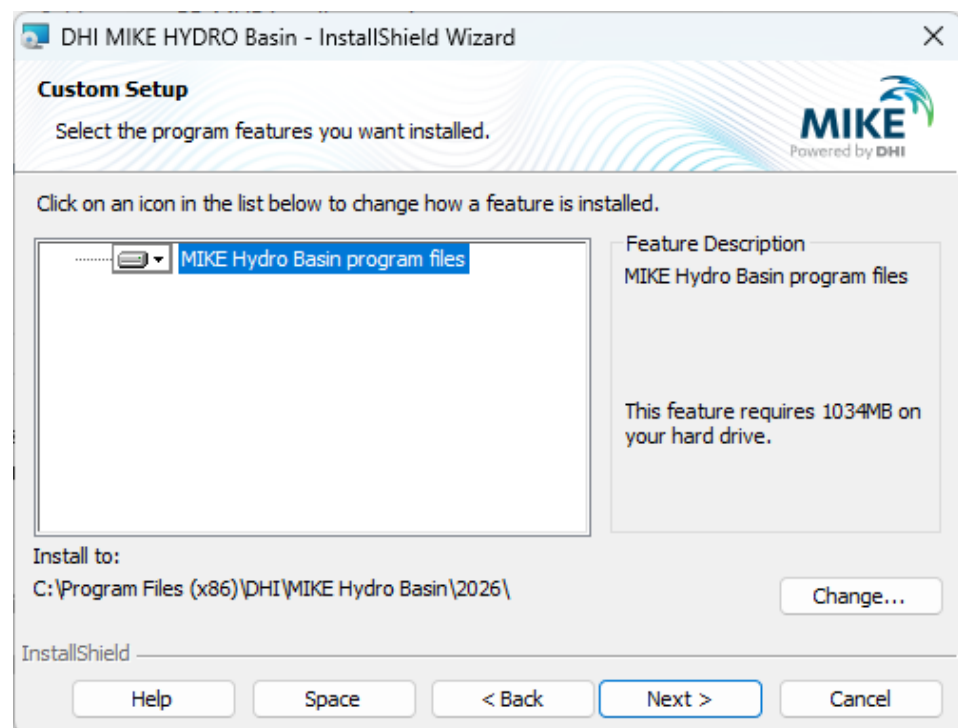


Figure 3 Select Custom Setup

3. The next step is the **License selection** dialog. Select the option that applies to your license type. You can always change this at a later stage through the DHI License Manager, which you find under the **DHI License Administration** program group in the Windows Start menu once the MIKE HYDRO Basin Installation is complete. Under the same folder, you also find a link to the web resource as **DHI License Manager Documentation Index**. See Figure 4.

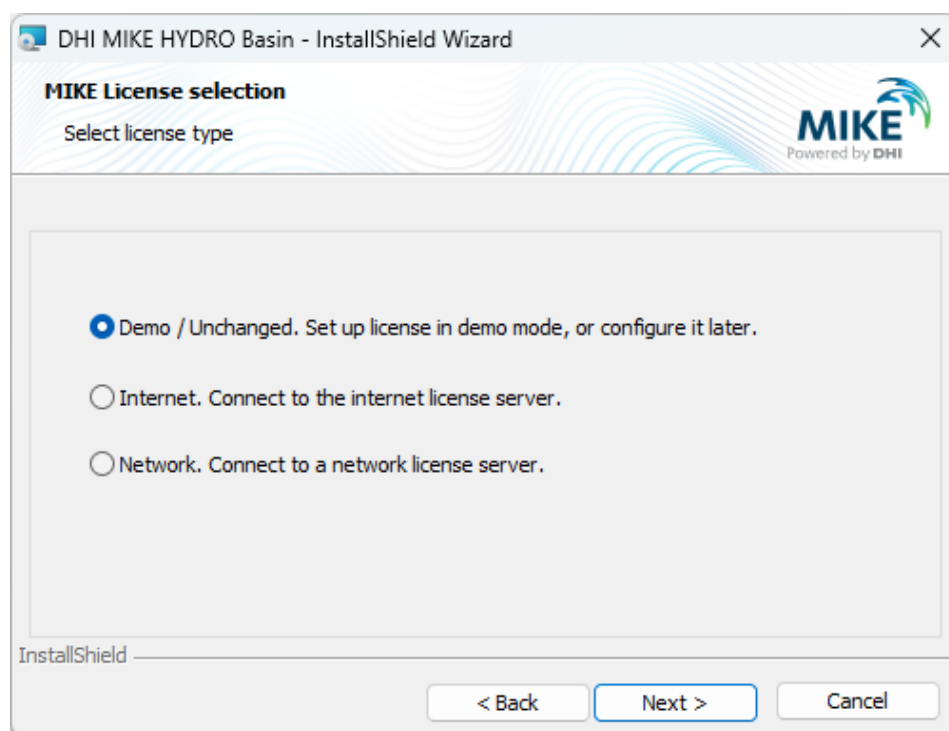


Figure 4 Select license type

Click **Next** in to begin the installation process. Please be aware that it may take several minutes to complete. See

4. Figure 5.

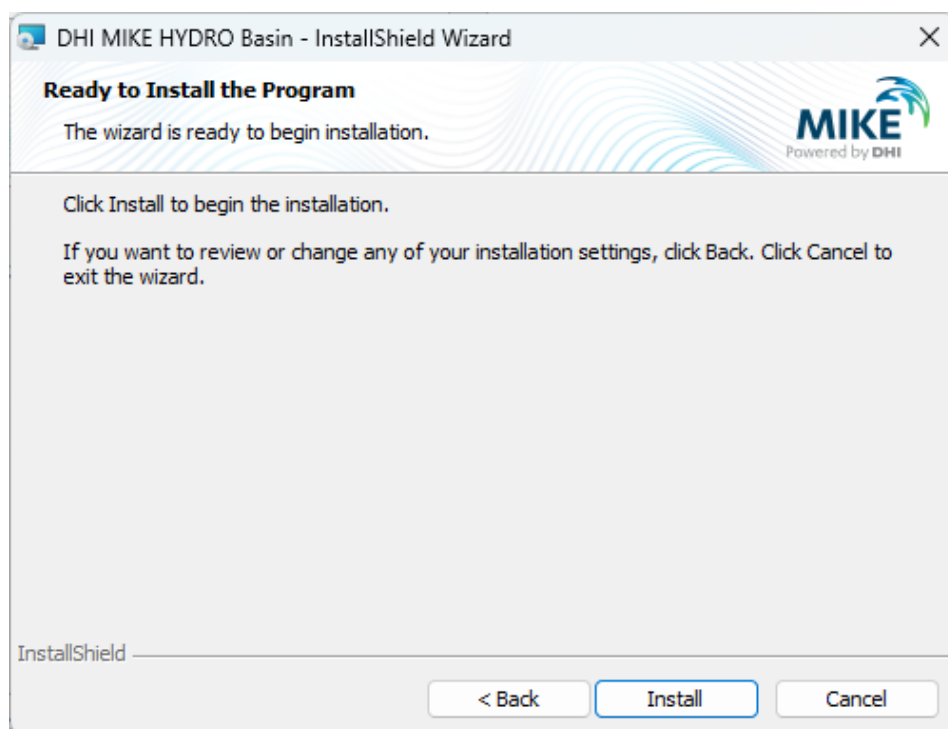


Figure 5 Installation wizard is ready

A progress bar will keep you updated about installation status. See Figure 6.

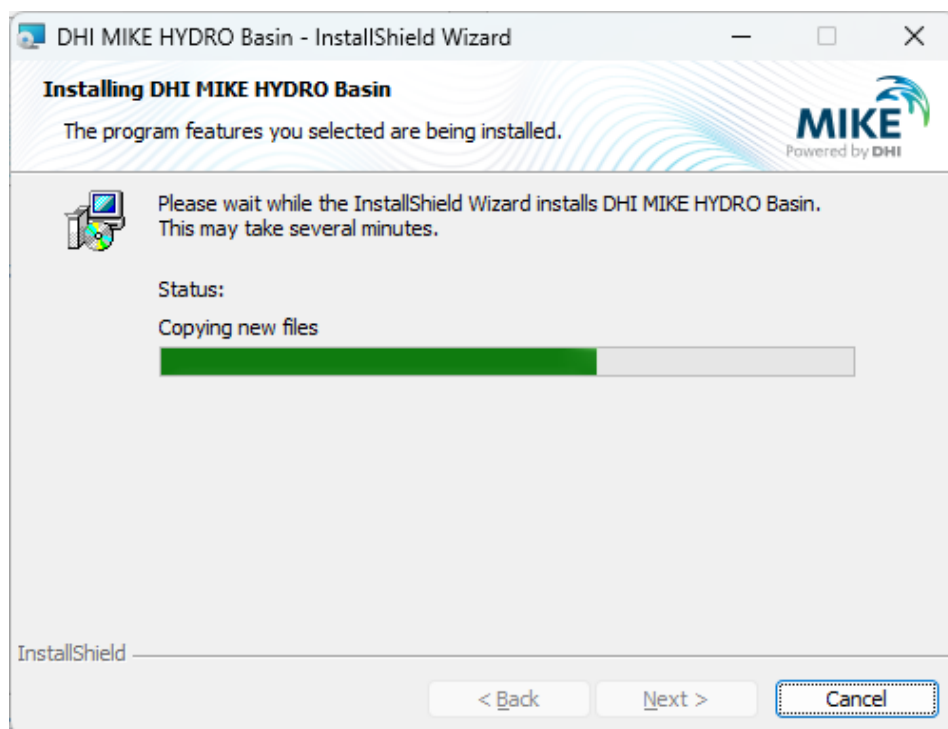


Figure 6 Installation in progress

5. Once you receive confirmation that the installation is completed, click **Finish** to end the process. See Figure 7.

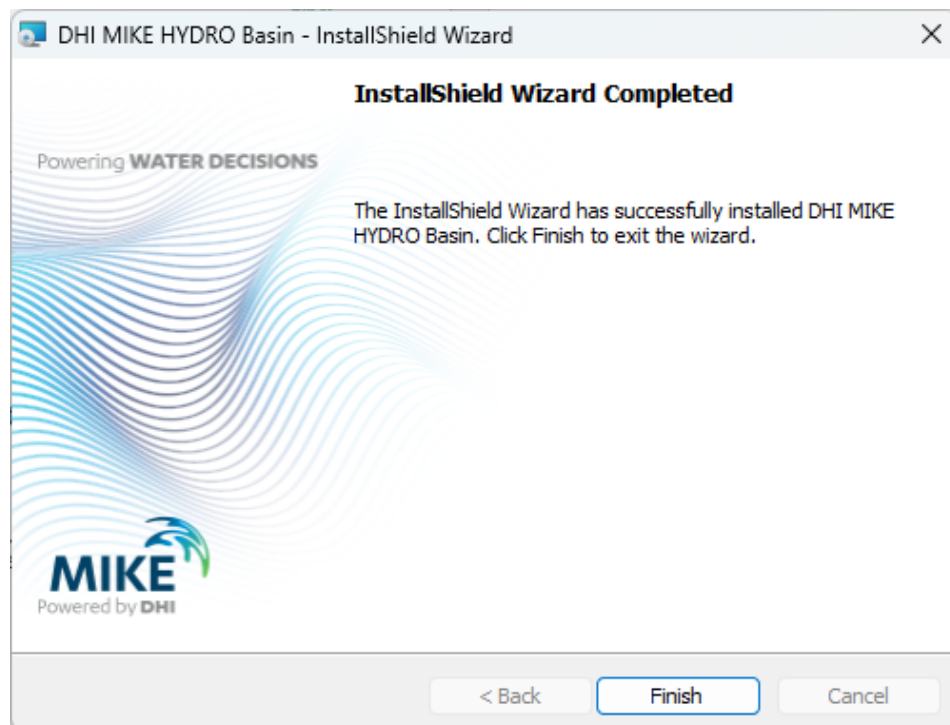


Figure 7 Installation completed

6. Provided that licensing is properly configured, you are now ready to start MIKE HYDRO Basin. Simply open the Windows start menu and click **MIKE HYDRO Basin** under the program group named **MIKE HYDRO Basin 2026**. In case the license is not in place, please review your licensing options and make necessary adjustments in the **DHI License Management tool**.

NOTE: Under the same program folder, you will also find a link to the web resource **MIKE HYDRO Basin Documentation Index**. Here, you find all related documentation in PDF format, for online reading or download at your convenience.