

AutoCal

Auto Calibration Tool

User Guide





PLEASE NOTE

COPYRIGHT

This document refers to proprietary computer software which is protected by copyright. All rights are reserved. Copying or other reproduction of this manual or the related programs is prohibited without prior written consent of DHI. For details please refer to your 'DHI Software Licence Agreement'.

LIMITED LIABILITY

The liability of DHI is limited as specified in Section III of your 'DHI Software Licence Agreement':

'IN NO EVENT SHALL DHI OR ITS REPRESENTATIVES (AGENTS AND SUPPLIERS) BE LIABLE FOR ANY DAMAGES WHATSOEVER INCLUDING, WITHOUT LIMITATION, SPECIAL, INDIRECT, INCIDENTAL OR CONSEQUENTIAL DAMAGES OR DAMAGES FOR LOSS OF BUSINESS PROFITS OR SAVINGS, BUSINESS INTERRUPTION, LOSS OF BUSINESS INFORMATION OR OTHER PECUNIARY LOSS ARISING OUT OF THE USE OF OR THE INABILITY TO USE THIS DHI SOFTWARE PRODUCT, EVEN IF DHI HAS BEEN ADVISED OF THE POSSIBILITY OF SUCH DAMAGES. THIS LIMITATION SHALL APPLY TO CLAIMS OF PERSONAL INJURY TO THE EXTENT PERMITTED BY LAW. SOME COUNTRIES OR STATES DO NOT ALLOW THE EXCLUSION OR LIMITATION OF LIABILITY FOR CONSEQUENTIAL, SPECIAL, INDIRECT, INCIDENTAL DAMAGES AND, ACCORDINGLY, SOME PORTIONS OF THESE LIMITATIONS MAY NOT APPLY TO YOU. BY YOUR OPENING OF THIS SEALED PACKAGE OR INSTALLING OR USING THE SOFTWARE, YOU HAVE ACCEPTED THAT THE ABOVE LIMITATIONS OR THE MAXIMUM LEGALLY APPLICABLE SUBSET OF THESE LIMITATIONS APPLY TO YOUR PURCHASE OF THIS SOFTWARE.'



S



CONTENTS

1	Auto Calibration Tool	7
1.1	New AutoCal Dialog	9
1.2	Simulation Specifications	9
1.2.1	Model simulation sequence	10
1.2.2	Model parameter files	11
1.2.3	Simulation option	12
1.2.4	Simulation title	12
1.3	Model Parameters	12
1.4	Objective Functions	15
1.4.1	Output measures	16
1.4.2	Objective functions	18
1.4.3	Evaluation period	19
1.4.4	Aggregation of objective functions	19
1.5	Scenario Runs	20
1.5.1	Scenario type	21
1.5.2	Parameters	21
1.6	Sensitivity Analysis	21
1.6.1	Sensitivity analysis method	22
1.6.2	Local sensitivity analysis	22
1.7	Parameter Optimisation	24
1.7.1	Optimisation method	24
1.7.2	Shuffled Complex Evolution method	25
1.7.3	Population Simplex Evolution method	28
1.8	Save Output Files	30
1.9	Simultaneous simulations	31
1.10	Start AutoCal Simulation	33
1.11	Output	33
1.11.1	General output files	33
1.11.2	Sensitivity analysis output	33
1.11.3	Optimisation output	34
1.12	Error handling	35
2	Examples	37
2.1	MIKE 11	37
2.1.1	Example 1	37
2.1.2	Example 2	39
2.1.3	Example 3	46
2.1.4	Example 4	48



2.2	MIKE 21	51
2.2.1	Example 1	51
2.2.2	Example 2	54
2.3	MIKE SHE	57
2.3.1	Example 1	57
2.3.2	Example 2	59
Index63



1 Auto Calibration Tool

AutoCal is a generic tool for performing automatic calibration, parameter optimisation, sensitivity analysis and scenario management of the numerical modelling engines under MIKE Zero. It interfaces the modelling engines using the MIKE Zero PFS (parameter files system) format for model input and the DFS (data file system) format for model output. AutoCal can also be linked to other modelling engines by interfacing ASCII model input files and creating a bridge between the model output and the DFS file format.

The core of the AutoCal tool consists of the following steps:

1. Provision of a set of model parameter values to the numerical model to be used in a specific model run.
2. Execution of the simulation model using the specified set of model parameter values.
3. Calculation of statistical performance measures of the model output.

The model parameter interface is made via a so-called template file. This file is simply a replica of the model input file in which parameter identification tags are placed at the locations where the numerical values of the model parameters are given. Thus, when AutoCal has to provide a new set of model parameters to the model, the parameter identification tags in the template file are substituted by the numerical values and saved in the model input file to be used when running the model. It is possible to manipulate model parameters in different model input files. For each model input file a corresponding template file is defined.

NOTE: The character “!” is used as a delimiter in the template file to identify the parameters to be manipulated during the simulation. I.e. the character “!” is a reserved character for AutoCal and cannot be used anywhere else in the model input, e.g. in text strings or file names.

AutoCal allows parameters to be defined as functions of other parameters that are manipulated in the AutoCal run. In this case general equations can be specified that defines the relations between the dependent model parameter and the other parameters. AutoCal provides the set of independent parameter values and the dependent parameters are then calculated automatically from these values using the defined equations. Both dependent and independent parameter values are then substituting their corresponding parameter identification tags in the template files. Besides the standard arithmetic operators, the equation tool includes a large number of mathematical functions.

A parameter may also be defined as a constant. In this case the constant value defined in AutoCal is substituting the corresponding parameter identification tag in the template file. This feature is especially useful when a sensitivity analysis is performed prior to the parameter optimisation. In this case



the sensitivity analysis typically includes a long list of parameters. From the results of the sensitivity analysis the most sensitive parameters are retained in the subsequent parameter optimisation. Instead of making a new AutoCal setup, the same setup as used in the sensitivity analysis can be applied simply by setting the insensitive parameters to constant values.

A model simulation in AutoCal can be defined as a sequence of individual model runs. AutoCal supports execution of all the MIKE Zero model engines. In this case the model simulation setup file is given as input. In addition, AutoCal enables execution of any executable (.exe) or batch (.bat) file. In this case the executable as well as the corresponding list of arguments are given as input.

Whether AutoCal is used for parameter optimisation, sensitivity analysis or scenario management, the performance of the model simulation given the specified parameter set should be assessed. This is done by calculating statistical performance measures. These measures are typically comparison statistics that compare measurements or, in general, target values with corresponding simulated values.

For calculating the comparison statistics AutoCal requires that simulation results and corresponding observations are given as time series in DFS0 files. If the output from a model engine is not explicitly given in DFS0 format, a processing of simulation results is required to transform the simulation results at measurement locations into DFS0 format. This post-processing is then part of the sequence of model runs defined in AutoCal. Typically post-processing is required for MIKE 11 result files (.res11) and for models that provide results in 1D, 2D or 3D grid files (.dfs1, .dfs2 and .dfs3). For application of AutoCal with modelling engines that are not included in MIKE Zero the COM components included in the MIKE Objects Time Series Package can be used to create DFS0 time series files from the model output files.

Before setting up AutoCal, the simulation model should be properly tested. At least one model run should be performed to create the output files that are needed in the AutoCal setup.

Folder structure

AutoCal requires that the setup of the model and any linked sub-models to be used by AutoCal is placed in a sub-folder of the folder with the AutoCal setup file.

Example:

C:\temp\MyAutocal.auc

C:\temp\MyModel\

When AutoCal is launched, copies of the model setup folder will be created (one for each simultaneous simulation) and used for individual model simulations by AutoCal.

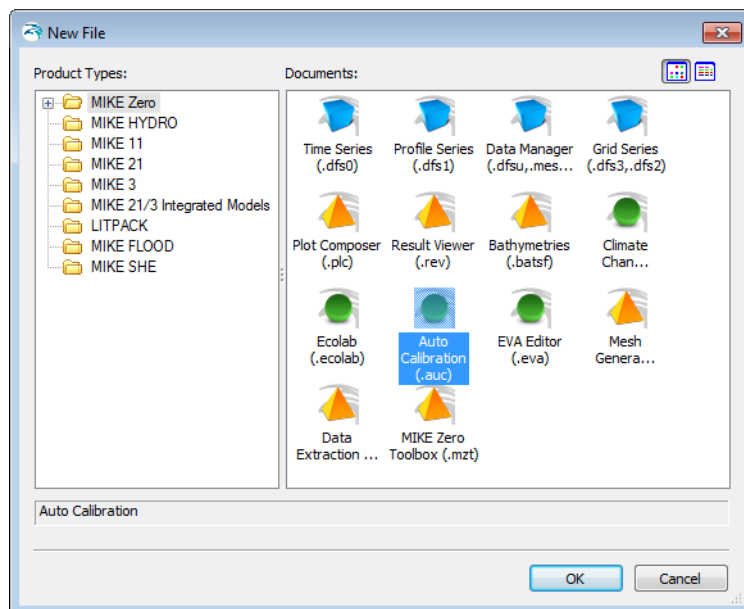


For example, if the number of simultaneous simulations is set to four, the following sub-folders will be created:

```
C:\temp\MyAutocal.auc
C:\temp\MyModel_Process1\
C:\temp\MyModel_Process2\
C:\temp\MyModel_Process3\
C:\temp\MyModel_Process4\
```

1.1 New AutoCal Dialog

To create a new AutoCal setup, use the File | New | File... top menu item, or the New icon. This will open the New File dialog where you can select Auto Calibration (.auc) from the MIKE Zero file types.



1.2 Simulation Specifications

On the *Simulation Specifications* page, the model simulation sequence, the model parameter files, and the simulation option are specified.

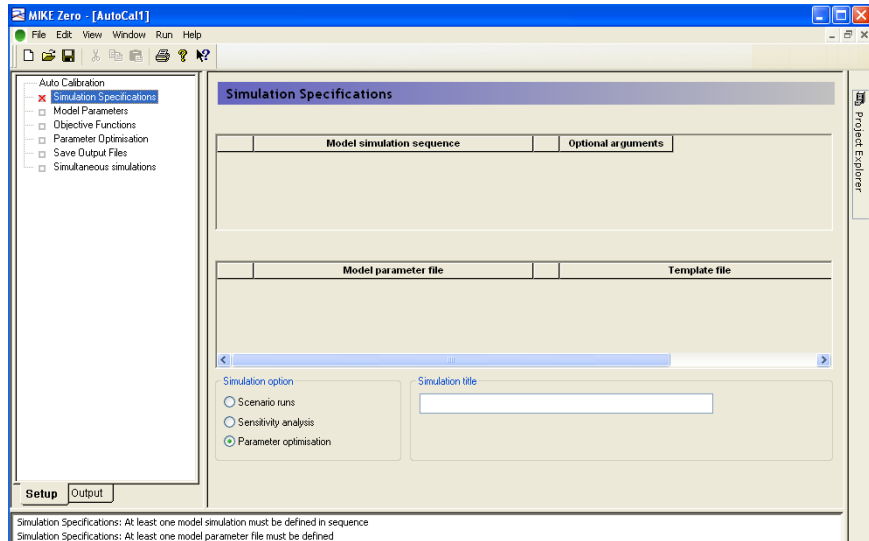


Figure 1.1 Simulation specifications page

1.2.1 Model simulation sequence

A model simulation in AutoCal can be defined as a sequence of individual model runs. For example, a modelling sequence may consist of a hydrodynamic (HD) model simulation followed by an advection-dispersion (AD) model simulation that uses the HD output. In this case two individual model runs must be defined in the *Model simulation sequence* table, including the HD run in the first row and the AD run in the second row. Another typical example is a simulation followed by the extraction and savings of simulation results at measurement points to DFS0 files.

AutoCal will execute MIKE Zero based numerical calculation kernels as well as any executable (.exe) or batch (.bat) file. In this case the model simulation file for the numerical engine (e.g. a .sim11 file for a MIKE 11 run and a .m21 file for a MIKE 21 run) or the name of the .exe or .bat file must be specified in the *Model simulation sequence* column.

If the executable file requires arguments, such as an input file name or some simulation options, these are written in the *Optional arguments* column.

For post-processing of model results, AutoCal can extract time series from 1D (dfs1), 2D (dfs2) and 3D(dfs3) result files using the MIKE Zero Toolbox. The toolbox action is saved as a .mzt file and can be executed by AutoCal by specifying the .mzt file in the *Model simulation sequence* table.

In MIKE SHE and MIKE 11 HD you can specify time series output that can be used directly by AutoCal.



To extract time series of other MIKE 11 variables from a MIKE 11 result file, the *res11read.exe* program can be used. The *Model simulation sequence* column should then include the *res11read* input file (.res11read), which specifies the data to be extracted from the res11 file and saved in a dfs0 file. This file should contain the following:

```
-silent -somerSpecFileName -MakeDfs0 Res11FileName Dfs0FileName
```

where *SpecFileName* is the name of the file that contains specifications of the data to be extracted from the .res11 result file (item, chainage and river-name), *Res11FileName* is the name of the .res11 result file, and *Dfs0FileName* is the root name of the dfs0 file where the extracted time series are to be saved.

Note the *Dfs0FileName* file name must not include the .dfs0 extension.

Note the relative path names should be used for the specified files.

More information about the *res11read* application program is given in the MIKE 11 User Guide, Appendix B.

1.2.2 Model parameter files

In the *Model parameter files* table, the names of the files containing the model parameters to be manipulated by AutoCal are specified.

AutoCal can manipulate parameters in the model parameter files associated with the numerical calculation kernels. For some simulation models only one model parameter file is associated, but for some models (e.g. MIKE 11 and MIKE SHE) several model parameter files can be manipulated. AutoCal can also manipulate parameters in any ASCII file.

When a model parameter file is selected, a corresponding template file is automatically created -with *_Autocal* added to the file name. This template file is simply a replica of the model parameter file. It is used for placing parameter identification tags at the locations where the values of the model parameters to be manipulated in AutoCal are given. The template file can be directly edited from AutoCal. For MIKE Zero PFS files, the corresponding editor is opened. For ASCII files, Notepad is opened.

Identification tags for model parameters

In AutoCal, reserved floating point values are used as identification tags. The identification tags are the values 1.01e-35, 1.02e-35, ..., 9.99e-35. In the model editor, the identification tag is placed in the field where the numerical value of the model parameter is given. Individual parameters must be given unique identification tags.

If several model parameters should be given the same parameter value in AutoCal, the same identification tag can be used. If different identification



tags are used, then the parameters can be coupled using the parameter options on the *Model Parameters* tab.

When the template file has been created and the parameter identification tags have been entered, a table with the model parameters is automatically created on the *Model Parameters* tab.

When running AutoCal, a second template file is created (.tpl is added to the file name) that is used internally by AutoCal.

Units used in AutoCal

AutoCal optimizes the parameters stored in the pfs file. However, parameters stored in these files are stored using the base units for the parameter type. The base units are always standard SI units. Thus, if you are not using the base parameter units (e.g. feet instead of metres), AutoCal will ignore these unit changes. Thus, you must always use the base units if you want to use AutoCal - or at least be aware that the optimized values output by AutoCal are in the base SI units.

1.2.3 Simulation option

AutoCal supports three different simulation options:

- Scenario runs
- Sensitivity analysis
- Parameter optimisation

Depending on the choice a corresponding property page is shown in the tree view.

1.2.4 Simulation title

Optionally a simulation title can be specified.

1.3 Model Parameters

On the *Model Parameters* page (Figure 1.2) the properties of the model parameters that are defined in the model parameter files are specified. The parameter table is automatically created by AUTOAL based on the specifications given in the template files on the *Simulation Specifications* page.



Model Parameters										
	ID value	Name	Parameter type	Initial value	Lower bound	Upper bound	Transformation	Equation	Keyword	Comment
1	1.01e-035	Kh_Unit2	Variable	0.0001	1e-005	0.001	Logarithmic		Karup_Au	
2	1.02e-035	Kv_Unit2	Dependent	0	0	0	Logarithmic	0.1*Kh_Unit2	Karup_Au	
3	1.03e-035	Kh_Unit4	Variable	1e-005	1e-006	0.0001	Logarithmic		Karup_Au	
4	1.04e-035	Kv_Unit4	Dependent	0	0	0	Logarithmic	0.1*Kh_Unit4	Karup_Au	
5	1.05e-035	DrainLevel	Variable	-1	-1.3	-0.8	Real		Karup_Au	
6	1.06e-035	DrainConst	Variable	1e-007	1e-008	1e-006	Logarithmic		Karup_Au	
7	1.07e-035	LeakCoeF	Variable	1e-007	1e-008	1e-006	Logarithmic		karup_AuT	
8	1.09e-035	Alpha_Soil1	Variable	0.05	0.01	0.1	Logarithmic		UzSoilPro	
9	1.08e-035	Ks_Soil1	Variable	1e-005	1e-006	0.0001	Logarithmic		UzSoilPro	
10	1.11e-035	Alpha_Soil2	Variable	0.05	0.01	0.1	Logarithmic		UzSoilPro	
11	1.1e-035	Ks_Soil2	Constant	1e-005	0	0	Logarithmic		UzSoilPro	

Figure 1.2 Model Parameters page

The following properties are specified in the table:

ID value

The ID value is the identification tag value given for the parameter in the template file.

Keyword/Line no

The keyword is an identification string that shows the location of the parameter in the PFS model input file. The first part of the string is the name of the template file. This is followed by the hierarchy of PFS sections separated by dots. The last part of the string is the PFS keyword. If the parameter file is not a MIKE Zero PFS file, the line No. where the parameter is located is shown.

For each parameter, the following has to be specified:

Name

The user must specify a unique name for each parameter. This name must not include white spaces. In addition, if the parameter is included as an independent parameter in an equation, arithmetic symbols and function names used by the equation parser must not be used as part of the parameter name.

Parameter type

The parameter may be defined as either a *Variable* parameter, a *Constant* parameter or a *Dependent* parameter. A variable parameter is a parameter that is changed by AutoCal according to the chosen simulation option. For a variable parameter the *Initial value*, *Lower bound* and *Upper bound* need to be defined. A constant parameter is set to the value defined in the *Initial value*



field. A dependent parameter is defined as a function of the other parameters. In this case the *Equation* must be specified.

Initial value

The *Initial value* is the value used by AutoCal for performing a single scenario run. If the *Local sensitivity analysis* option is chosen, the sensitivity coefficients are evaluated around the initial parameter set.

Lower bound

The *Lower bound* specifies the lower limit of the feasible parameter values in the parameter optimisation.

Upper bound

The *Upper bound* specifies the upper limit of the feasible parameter values in the parameter optimisation.

Transformation

The parameter may be used in AutoCal as its native value by setting the transformation field to *Real* or as its logarithmic transformed value by setting the transformation field to *Logarithmic*. A logarithmic transformation is generally recommended if the feasible range of the parameter varies over orders of magnitude.

Equation

If a parameter is defined as a dependent parameter, an equation must be given to define the parameter as a function of the available variable parameters. AutoCal uses an equation parser that supports the general arithmetic operators (+, -, *, /) as well as a number of mathematical functions. The list of available mathematical functions is given in Table 1.1.

Table 1.1 Mathematical functions used by the equation parser (X and Y are variable names)

Syntax	Function
SQR(X)	Square function
SQRT(X)	Square root function
SIN(X)	Sinus function. SIN returns the sine of the angle X in radians
COS(X)	Cosinus function. COS returns the cosine of the angle X in radians
TAN(X)	Tangent function. TAN returns the tangent of the angle X in radians
COTAN(X)	Cotangent function. COTAN returns the cotangent of the angle X in radians
ATAN(X)	ArcTangent function



Table 1.1 Mathematical functions used by the equation parser (X and Y are variable names)

Syntax	Function
EXP(X)	Exponential function
LN(X)	Natural logarithmic function
LOG(X)	10 based logarithmic function
SINH(X)	Sinus Hyperbolic function
COSH(X)	Cosinus Hyperbolic function
INTPOW(X,Y)	The INTPOW function raises X to an integer power Y, e.g. INTPOW(2, 3) = 8. Note that the result of INTPOW(2, 3.4) = 8 as well
POW(X,Y)	The POW function raises X to any power Y
ABS(X)	Absolute value
SIGN(X)	SIGN(X) returns -1 if X<0; +1 if X>0, 0 if X=0
TRUNC(X)	Discards the fractional part of a number, e.g. TRUNC(3.2) is 3
MIN(X,Y)	Minimum of X and Y, e.g. MIN(2,3) is 2
MAX(X,Y)	Maximum of X and Y, e.g. Max(2,3) is 3

As an example, suppose Y is to be expressed as a function of the variables X1, X2 and X3 as 5 times variable X1 minus the square of variable X2 plus 2 times the natural logarithm of X3, the *Equation* field for Y should be written:

$$5*X1-SQR(X2)+2*LN(X3)$$

Comment

Optionally a comment can be written for the parameter.

Model parameter update

If parameter values are updated or deleted in the model parameter files, the model parameter table is automatically updated.

1.4 Objective Functions

On the *Objective Functions* page (Figure 1.3) the properties for calculation of comparison statistics are specified. The basic statistics used by AutoCal are the *Output measures* that include a single comparison statistic between an observed and a simulated time series. These basic measures can then be aggregated into different *Objective functions*, for instance according to spatial location, type of variable, or type of statistic. Finally, the defined objective

functions are aggregated into a single statistic that is used by the optimisation algorithm.

Objective Functions

Evaluation period

Start date: 01-01-1975 00:00:00

End date: 01-01-1975 00:00:00

Aggregation of objective functions: Transformation to a common distance scale

Name	Function type	Weight
F1	Weighted sum of squares	1
F2	Weighted sum of squares	1

Output measures

	Name	Output file	Item name	Target file	Item name	Statistic type	Weight below	Weight above	Function name
1	RMSE_well_5	C:\work\...\KarupS	Well_5	C:\work\...\TimeS	Well_5 head obs	RMSE	1	1	F1
2	RMSE_well_9	C:\work\...\KarupS	Well_9	C:\work\...\TimeS	Well_9 head obs	RMSE	1	1	F1
3	RMSE_well_12	C:\work\...\KarupS	Well_12	C:\work\...\TimeS	Well_12 head obs	RMSE	1	1	F1
4	RMSE_well_21	C:\work\...\KarupS	Well_21	C:\work\...\TimeS	Well_21 head obs	RMSE	1	1	F1
5	RMSE_well_22	C:\work\...\KarupS	Well_22	C:\work\...\TimeS	Well_22 head obs	RMSE	1	1	F1
6	RMSE_well_24	C:\work\...\KarupS	Well_24	C:\work\...\TimeS	Well_24 head obs	RMSE	1	1	F1
7	RMSE_well_27	C:\work\...\KarupS	Well_27	C:\work\...\TimeS	Well_27 head obs	RMSE	1	1	F1
8	RMSE_well_35	C:\work\...\KarupS	Well_35	C:\work\...\TimeS	Well_35 head obs	RMSE	1	1	F1
9	RMSE_well_37	C:\work\...\KarupS	Well_37	C:\work\...\TimeS	Well_37 head obs	RMSE	1	1	F1
10	RMSE_well_39	C:\work\...\KarupS	Well_39	C:\work\...\TimeS	Well_39 head obs	RMSE	1	1	F1
11	RMSE_well_45	C:\work\...\KarupS	Well_45	C:\work\...\TimeS	Well_45 head obs	RMSE	1	1	F1
12	RMSE_well_49	C:\work\...\KarupS	Well_49	C:\work\...\TimeS	Well_49 head obs	RMSE	1	1	F1
13	RMSE_well_55	C:\work\...\KarupS	Well_55	C:\work\...\TimeS	Well_55 head obs	RMSE	1	1	F1
14	RMSE_runoff	C:\work\...\KarupS	KARUP RIVE	C:\work\...\TimeS	20.05	RMSE	1	1	F2

Figure 1.3 Objective Functions page

1.4.1 Output measures

Name

Name of the output measure.

Output file and item name

File name and corresponding item name of the time series of the simulation results.

Target file and item name

File name and corresponding item name of the target time series.

Statistic type

AutoCal includes three basic comparison statistics:

Average error (*Avg. Error*):

$$AE = \frac{1}{N} \sum_{i=1}^N w_i (SIM_i - TARGET_i) \quad (1.1)$$



Root mean square error (*RMSE*):

$$RMSE = \sqrt{\frac{1}{N} \sum_{i=1}^N w_i (SIM_i - TARGET_i)^2} \quad (1.2)$$

Standard deviation of residuals (*St.Dev.*):

$$STD = \sqrt{\frac{1}{N} \sum_{i=1}^N w_i (SIM_i - TARGET_i - AE)^2} \quad (1.3)$$

where $TARGET_i$ and SIM_i , $i = 1, \dots, N$ are the observed and the corresponding simulated time series, respectively, and w_i is a user specified weight (weight below and weight above). Before calculation of the statistics, the time series are synchronised; that is, simulated values are extracted at the same time instants as the available target values using linear interpolation.

The three statistics are linked via the equation:

$$RMSE^2 = AE^2 + STD^2 \quad (1.4)$$

The statistic *AE* is a measure of the general offset between targets and simulations (bias), whereas *STD* is a measure of the dynamical correspondence. *RMSE* is an aggregated measure that includes both bias and dynamical correspondence.

Besides the basic statistics, AutoCal includes two event-based statistics:

Error of maximum value (*Error of max.*):

$$ErrMax = w_i (Max\{SIM_i\} - Max\{TARGET_i\}) \quad (1.5)$$

Error of minimum value (*Error of min.*):

$$ErrMin = w_i (Min\{SIM_i\} - Min\{TARGET_i\}) \quad (1.6)$$

The maximum and minimum target and simulated values are extracted in the period defined in the target file.

Weight below and weight above

The weight below is the weight assigned when the simulated value is below the target, and the weight above is the weight assigned when the simulated value is above the target. The weights should reflect the relative importance of positive and negative deviations from the target. In addition, the weights should specify the relative importance of the different output measures. For instance, in the model calibration, the assigned weights should reflect the



measurement uncertainties, and the correlation between the measurements. That is, smaller weights should be given to more uncertain measurements, and if clusters of measurement points exist, these points should be given a lower weight than single point measurements in other parts of the modelling domain in order not to put undue emphasis on model performance in certain areas.

Function name

The function name of the objective function in which the output measure should be included. In the drop-down menu the function names from the *Objective functions* table are given.

1.4.2 Objective functions

Name

Name of the objective function.

Function type

AutoCal uses three different functions for aggregation of the defined output measures:

Weighted sum:

$$F_{pool,i} = \sum_{j=1}^n F_j \quad (1.7)$$

Weighted sum of absolute values:

$$F_{pool,i} = \sum_{j=1}^n |F_j| \quad (1.8)$$

Weighted sum of squares:

$$F_{pool,i} = \sum_{j=1}^n F_j^2 \quad (1.9)$$

where F_j is the output measure and n is the number of measures that are pooled.

Typically, output measures within a certain area that measure the same statistic for the same physical variable are pooled to evaluate the average model performance for that variable in the specified area with respect to bias (*Avg. Error*), dynamical behaviour (*St. Dev.*) or an overall goodness-of-fit (*RMSE*). The event-based statistics are typically pooled into an aggregate error of maximum and minimum values, respectively.



Weight

The weight assigned to the objective function in the aggregation of the different objective functions into one aggregate measure to be optimised. The assigned weights should reflect the relative priorities given to the different objectives, depending on the specific model application being considered. For investigating the entire Pareto front between the objective functions in a multi-objective optimisation, the aggregated measure can be adopted by performing several optimisation runs using different weights.

1.4.3 Evaluation period

Start date

The start date of the time series for which the output measures are calculated. It is generally recommended to set the start date after the start date of the model simulation in order to include a certain warm-up period in the simulation to minimise the influence from the initial conditions in the calculation of the output measures.

End date

The end date of the time series for which the output measures are calculated. This is usually set to the end date of the model simulation.

1.4.4 Aggregation of objective functions

The defined objective functions are aggregated into one measure:

$$F = \sum_{i=1}^M w_i g_i(F_{pool,i}) \quad (1.10)$$

where M is the number of objective functions that are aggregated, w_i , $i = 1, 2, \dots, M$ are the weights, and $g_i(\cdot)$, $i = 1, 2, \dots, M$ are transformation functions assigned to each objective function.

Three different transformation options are available:

No transformation:

$$g_i(F_{pool,i}) = F_{pool,i} \quad (1.11)$$

Transformation to a common distance scale:

$$g_i(F_{pool,i}) = \frac{F_{pool,i}}{\sigma_i} + \varepsilon_i \quad (1.12)$$

where σ_j is the standard deviation of the j 'th objective function of the initial population used in the optimisation algorithm, and ε_j is a transformation constant given by:

$$\varepsilon_j = \max \left\{ \min \left\{ \frac{F_j}{\sigma_j}, j= 1, 2, \dots, M \right\} \right\} - \min \left\{ \frac{F_j}{\sigma_j} \right\} \quad (1.13)$$

Transformation to a common probability scale:

$$g_i(F_{pool,i}) = \Phi \left(\frac{F_{pool,i} - \mu_i}{\sigma_i} \right) \quad (1.14)$$

where $\Phi(\cdot)$ is the cumulative distribution function of the standard normal distribution, and μ_i and σ_i are the mean and the standard deviation of the i 'th objective function of the initial population.

The transformation functions that are applied in the transformation to a common distance scale and a common probability scale are introduced to compensate for differences in the magnitudes of the different measures so that all $g_i(\cdot)$ have about the same influence on the aggregated objective function near the optimum. When using a population-based optimisation algorithm, such as the Shuffled Complex Evolution method and the Population Simplex Evolution, an initial population within the feasible region is evaluated. From this initial population, the transformation functions are calculated.

1.5 Scenario Runs

If the scenario run option has been chosen, the scenario run properties must be specified on the *Scenario Runs* page (Figure 1.4).



Scenario Runs

Scenario type

Single run using initial parameter values
 Multiple runs

Parameters

	Kh_Unit2	Kh_Unit4	DrainLevel	DrainConst	LeakCoef	Alpha_Soil1	Ks_Soil1	Alpha_Soil2
1	0.0001	1e-005	-1	1e-007	1e-007	0.01	0.0001	0.05
2	0.0005	1e-005	-1	1e-007	1e-008	0.05	1e-005	0.05
3	1e-005	5e-005	-0.8	1e-008	1e-006	0.01	1e-006	0.1
4	0.0001	5e-005	-0.8	1e-008	1e-007	0.05	1e-005	0.1
5	1e-005	1e-006	-1.3	1e-006	1e-008	0.1	1e-006	0.01

Figure 1.4 Scenario Runs page

1.5.1 Scenario type

AutoCal includes two different options for performing scenario analysis:

- Single run using initial parameter values. In this case a single model run is performed using the initial parameter values given in the table on the *Model Parameters* page. When the model parameters and the objective functions have been specified, it is recommended to carry out a single run in order to check the setup
- Multiple runs. In this case multiple model runs are performed using the parameter values given in the *Parameters* table.

1.5.2 Parameters

In the *Parameters* table the set of variable parameters to be used in the scenario runs are specified.

1.6 Sensitivity Analysis

If the sensitivity analysis option has been chosen, the properties must be specified on the *Sensitivity Analysis* page (Figure 1.5).

Sensitivity analysis is often done as a first step to identify the most important model parameters to be fine-tuned in the succeeding parameter optimisation.

Sensitivity Analysis

Sensitivity analysis method: Local sensitivity analysis

Difference approximation: Forward

Perturbation option: Fraction of parameter interval

Perturbation fraction: 0.05

Calculate covariance matrix:

Figure 1.5 Sensitivity Analysis page

1.6.1 Sensitivity analysis method

The present version of AutoCal includes one sensitivity analysis method:

- Local sensitivity analysis

1.6.2 Local sensitivity analysis

Local sensitivity analysis provides the sensitivity of the model parameters around a specified parameter set, and hence gives information about the importance of the parameters only at that location in parameter space. If the simulation model is highly non-linear in its parameter-output interaction, sensitivity measures may vary considerably in the parameter space. Thus, parameters that are insensitive for certain parameter sets may be highly sensitive for other parameter sets and vice versa.

The local sensitivity measures are calculated around the initial parameter set specified on the *Model Parameters* page.

Difference approximation

The sensitivity of a parameter with respect to a model response (output measure) is defined as

$$S_i = \frac{\partial F}{\partial \theta_i} \quad (1.15)$$



where F is the output measure, and θ_j is the considered model parameter. The sensitivity measure is evaluated around a specified parameter set $(\theta_1, \theta_2, \dots, \theta_n)$.

In AutoCal a finite difference approximation is used to evaluate the sensitivity coefficients. Three different options are available:

Forward difference approximation:

$$S_j = \frac{F(\theta_1, \theta_2, \dots, \theta_j + \Delta\theta_j, \dots, \theta_n) - F(\theta_1, \theta_2, \dots, \theta_n)}{\Delta\theta_j} \quad (1.16)$$

Backward difference approximation:

$$S_j = \frac{F(\theta_1, \theta_2, \dots, \theta_n) - F(\theta_1, \theta_2, \dots, \theta_j - \Delta\theta_j, \dots, \theta_n)}{\Delta\theta_j} \quad (1.17)$$

Central difference approximation:

$$S_j = \frac{F(\theta_1, \theta_2, \dots, \theta_j + \Delta\theta_j, \dots, \theta_n) - F(\theta_1, \theta_2, \dots, \theta_j - \Delta\theta_j, \dots, \theta_n)}{2\Delta\theta_j} \quad (1.18)$$

where $\Delta\theta_j$ is the parameter perturbation.

The calculation of the sensitivity coefficients require $n + 1$ model evaluations in the case of forward and backward difference approximations, and $2n + 1$ model evaluations when the central difference approximation is applied.

Perturbation option

The parameter perturbation can be calculated as:

A fraction of the initial parameter value:

$$\Delta\theta_j = f_c \theta_j \quad (1.19)$$

A fraction of the parameter interval:

$$\Delta\theta_j = f_c (\theta_{i, upper} - \theta_{i, lower}) \quad (1.20)$$

where $\theta_{i, upper}$ and $\theta_{i, lower}$ are the specified upper and lower limits of the parameter.

Perturbation fraction

The perturbation fraction is the fraction f_c of the initial parameter value or the parameter interval depending on the choice of parameter perturbation.

Calculate covariance matrix

If this option is selected, the covariance matrix of the parameters evaluated around the initial parameter set is calculated. This matrix is derived based on the sensitivities of the simulated values corresponding to each of the target values with respect to each of the parameters. The matrix can only be calculated in the case a weighted least squares aggregated objective function is specified, i.e. each *Output measure* on the *Objective Functions* page is defined as a *RMSE* statistic, each *Objective function* is defined as a *Weighted sum of squares*, and the *Aggregation of objective functions* is set to *No transformation*.

1.7 Parameter Optimisation

If the parameter optimisation option has been chosen, the properties must be specified on the *Parameter Optimisation* page (Figure 1.6).

Parameter Optimisation

Optimisation method: Shuffled Complex Evolution

Algorithmic parameters

Apply default parameters

No of complexes	2	Population size	20
No of points in complex	7	No of points in simplex	4
No of points in sub-complex	4	Reflection step probability	0.8
No of evaluation steps by each complex	7	Contraction step probability	0.15

Initial sample

Initial sample type: Monte Carlo sampling

Random seed: 1969

Use initial parameter values:

Filename:

Stopping criteria

Maximum No of model evaluations	300
No of loops of convergence	5
Min. relative change in objective	0.001

Figure 1.6 Parameter Optimisation page with Shuffled Complex Evolution option chosen

1.7.1 Optimisation method

AutoCal includes two parameter optimisation methods:

- Shuffled Complex Evolution
- Population Simplex Evolution



1.7.2 Shuffled Complex Evolution method

The Shuffled Complex Evolution (SCE) method is a global optimisation algorithm that combines various search strategies, including (i) competitive evolution, (ii) controlled random search, (iii) the simplex method, and (iv) complex shuffling.

The SCE algorithm includes the following steps:

1. *Initialisation.* An initial sample of parameter sets θ_i are randomly generated from the feasible parameter space defined by the lower and upper limits of each parameter on the *Model Parameters* page. For each parameter set the objective function value $F_i = F(\theta_i)$ is calculated. The initial sample has the size $s = pm$ where p is the number of complexes and m is the number of points in each complex.
2. *Partitioning into complexes.* The s points are ranked in order of increasing objective function value ($F(1) < F(2) < \dots < F(s)$). The s points are partitioned into p complexes, such that points corresponding to function values $\{F(1), F(p+1), \dots, F((s-1)p+1)\}$ form the 1st complex, points corresponding to function values $\{F(2), F(p+2), \dots, F((s-1)p+2)\}$ form the 2nd complex, etc.
3. *Evolution.* A sub-complex of size q is formed from the complex by randomly choosing q points from the p points in the complex. A triangular probability distribution is used for assigning the probability of a point to be included in the sub-complex (i.e. larger probability for points with smaller objective function value). The sub-complex is evolved (offspring generation) according to the simplex algorithm. Each complex is evolved β times.
4. *Complex shuffling.* The new sample of s points is shuffled, cf. step 2.
5. Steps 2-4 are repeated until a stopping criterion is met.

Algorithmic parameters

The algorithmic parameters of the SCE algorithm, their feasible range and recommended values are shown in Table 1.2.

Table 1.2 Algorithmic parameters for the SCE algorithm (n = No. of optimisation parameters), their range and recommended values

Parameter	Description	Range	Recommended value
p	No. of complexes	$p \geq 1$	-
m	No. of points in a complex	$m \geq 2$	$2n + 1$



Table 1.2 Algorithmic parameters for the SCE algorithm (n = No. of optimisation parameters), their range and recommended values

Parameter	Description	Range	Recommended value
q	No. of points in a sub-complex	$2 \leq q \leq m$	$n + 1$
b	No. of evolution steps taken by each complex before shuffling	$\beta \geq 1$	$2n + 1$

If one complex is chosen in SCE and the number of points in the complex as well as the sub-complex are set equal to $n + 1$, the local search simplex method is obtained as a special case.

No. of complexes

Number of complexes p applied in the SCE algorithm. This is the most important parameter of the SCE algorithm. Sensitivity tests show that the dimensionality of the optimisation problem (No. of calibration parameters) is the primary factor determining the proper choice of p . In general, the larger value of p is chosen the higher the probability of converging into the global optimum but at the expense of a larger number of model simulations (the number of model simulations is virtually proportional to p), and vice versa. One should choose p to balance the trade-off between the robustness of the algorithm and the computing time.

No. of points in complex

Number of points in a complex. A recommended value for this parameter is $2n + 1$ where n is the number of optimisation parameters.

No. of points in sub-complex

Number of points in a sub-complex. A recommended value for this parameter is $n + 1$ where n is the number of optimisation parameters.

No. of evaluation steps by each complex

Number of evaluation steps taken by each complex before complex shuffling. A recommended value for this parameter is $2n + 1$ where n is the number of optimisation parameters.

Apply default parameters

If the *Apply default parameters* option is selected, the default algorithmic parameters in Table 1.2 are used.

Initial sample

Initial sample type

Three different options are available for generation of the initial sample in the SCE algorithm:



- Monte Carlo sampling. In this case the initial parameter sets are randomly generated within the feasible parameter range specified on the *Model Parameters* page assuming a uniform distribution.
- Latin hypercube sampling. In this case the individual parameters are sampled according to a stratified sampling scheme where the feasible parameter interval is divided into s equal intervals (s being the sample size) and a point is then randomly selected within each interval.
- Initial sample from previous optimisation run. This option allows continuing the optimisation from the last iteration loop of a previous optimisation run.

Random seed

Random seed used in the optimisation. Can be set to any positive integer value. Since the SCE method is a probabilistic search procedure, different optimisation results will be obtained by using different random seeds.

Use initial parameter values

Option to specify if the initial parameter values specified on the Model Parameters page should be included in the initial sample.

File name

File name of the file containing the optimisation results from a previous optimisation run to be used as initial conditions. The file to be specified is the AutoCal SCE optimisation output file (see Section 1.11.3).

Stopping criteria

Three stopping criteria are defined:

- Maximum number of model evaluations.
- Convergence in objective function space. In this case the optimisation terminates if the objective function of the best parameter set has not changed more than a user-defined minimum value in a given number of shuffling loops.
- Convergence in parameter space. In this case the optimisation terminates if the range of parameter values of the entire population in the parameter space is less than a given value (not user-defined).

The search terminates when one of these criteria is met.

Maximum No. of model evaluations

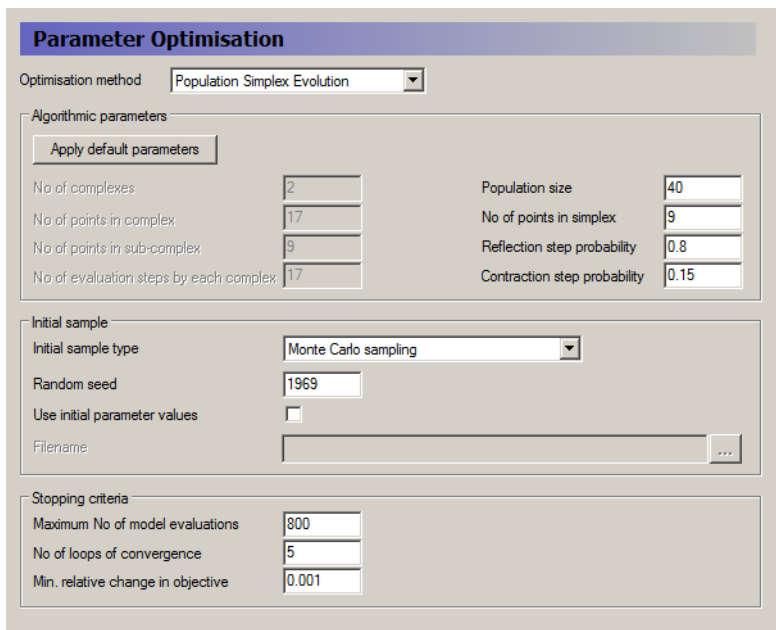
The maximum number of model evaluations allowed in the optimisation.

No. of loops of convergence

The number of iteration loops in which the objective function value of the best parameter set has not changed more than the *Minimum relative change in objective function value*.

Minimum relative change in objective function value

Minimum relative change allowed in the best objective function value in the last *No. of loops of convergence*.



The screenshot shows the 'Parameter Optimisation' dialog box. The 'Optimisation method' is set to 'Population Simplex Evolution'. The 'Algorithmic parameters' section includes an 'Apply default parameters' button and several input fields: 'No of complexes' (2), 'No of points in complex' (17), 'No of points in sub-complex' (9), 'No of evaluation steps by each complex' (17), 'Population size' (40), 'No of points in simplex' (9), 'Reflection step probability' (0.8), and 'Contraction step probability' (0.15). The 'Initial sample' section has 'Initial sample type' set to 'Monte Carlo sampling', 'Random seed' (1969), 'Use initial parameter values' (unchecked), and a 'Filename' field. The 'Stopping criteria' section includes 'Maximum No of model evaluations' (800), 'No of loops of convergence' (5), and 'Min. relative change in objective' (0.001).

Figure 1.7 Parameter Optimisation page with Population Simplex Evolution option chosen

1.7.3 Population Simplex Evolution method

The Population Simplex Evolution (PSE) method is a global optimisation algorithm that is especially suited for parallel execution using the simultaneous simulation option in AutoCal. The method evolves a population of points using the reflection and contraction operators included in the simplex method. In addition a mutation component is added to minimise the risk of premature convergence.

The PSE algorithm can be summarised as follows:

1. *Initialisation.* An initial sample of size s of parameter sets θ_i are randomly generated from the feasible parameter space defined by the lower and upper limits of each parameter on the *Model Parameters* page. For each parameter set the objective function value $F_i = F(\theta_i)$ is calculated.
2. *Evolution.* From the population s simplexes of size q are formed. A triangular probability distribution is used for assigning the probability of a point to be included in the simplex (i.e. larger probability for points with smaller objective function value). The simplex is evolved according to the simplex operators and a mutation operator. Thus, a simplex can be



evolved by reflection (with probability p_r), contraction (with probability p_c) or mutation (with probability $1-p_c-p_r$). For each simplex a random value ε between 0 and 1 is generated and this value then determines which operator should be applied for the evolution, i.e. reflection if $\varepsilon < p_r$, contraction if ε is in the interval $[p_r, p_r + p_c]$, and mutation if $\varepsilon > p_r + p_c$.

3. **Selection of new population.** The algorithm applies the principle of elitism to select the new population. The old population and the evolved population of points are sorted with respect to their objective function value. The best (i.e. smallest objective function value) s points defines the new population.
4. Steps 2-3 are repeated until a stopping criterion is met.

Algorithmic parameters

The algorithmic parameters of the PSE algorithm, their feasible range and recommended values are shown in Table 1.3.

Table 1.3 Algorithmic parameters for the PSE algorithm (n = No. of optimisation parameters), their range and recommended values

Parameter	Description	Range	Recommended value
s	Population size	$s > n$	-
q	No. of points in a simplex	$2 \leq q < s$	$n + 1$
p_r	Reflection step probability	$0 \leq p_r \leq 1$	0.70-0.90
p_c	Contraction step probability	$0 \leq p_c \leq 1$	0.05-0.20
p_m	Mutation probability determined as $p_m = 1-p_r-p_c$	$0 \leq p_m \leq 1$	0.01-0.10

Population size

Population size s applied in the PSE algorithm. This parameter is important for the convergence properties of the algorithm. In general, the larger value of s is chosen the higher the probability of converging into the global optimum but at the expense of a larger number of required model evaluations. One should choose s to balance the robustness of the algorithm and the computing time. The proper choice of s depends on the dimensionality of the problem.

No. of points in simplex

Number of points in a simplex. A recommended value for this parameter is $n + 1$ where n is the number of optimisation parameters.



Reflection step probability

The probability of performing a reflection step of the simplex. In this case the new point is found by reflecting the worst point of the simplex in the centroid of the remaining points. A recommended value for this parameter is in the range 0.70-0.90.

Contraction step probability

The probability of performing a contraction step of the simplex. In this case the new point is found as the mean between the worst point of the simplex and the centroid of the remaining points. A recommended value for this parameter is in the range 0.05-0.20. The sum of the reflection and contraction probabilities should be less than one. The remaining portion ($1-p_r-p_c$) is assigned a mutation probability with a recommended value in the range 0.01-0.10.

Initial sample

The same options as used for the SCE algorithm are applied.

Stopping criteria

The same stopping criteria as used for the SCE algorithm are applied.

1.8 Save Output Files

AutoCal allows output files from the individual model simulation runs to be saved. The names of the files to be saved are specified in the *Output files* table (Figure 1.8). The saved output files from the individual simulations are given an extension in the file name that contains the simulation number. For instance, if the simulation model produces a result file called MyResults.dfs2, the saved files are named MyResults_1.dfs2, MyResults_2.dfs2, etc.

The files are saved in the individual model sub-folders: _Process1, _Process2, etc.

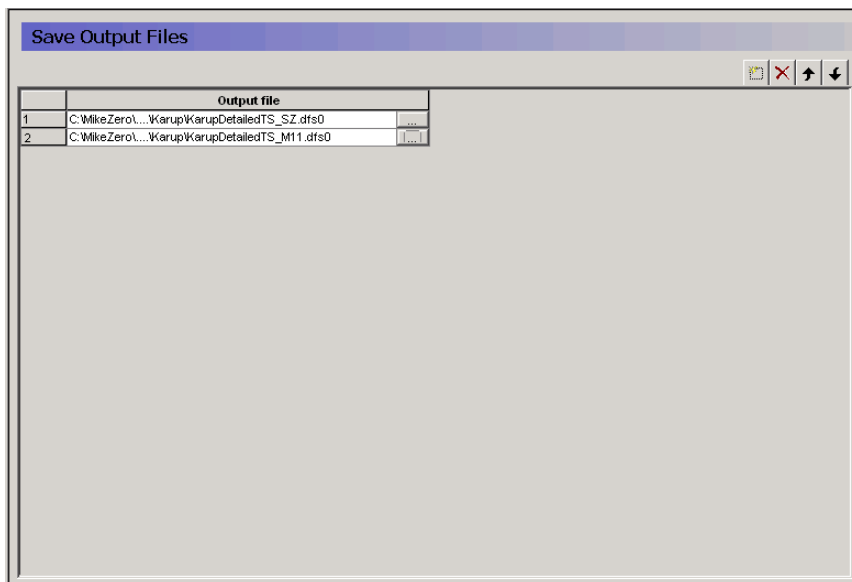


Figure 1.8 Save Output Files page

1.9 Simultaneous simulations

AutoCal gives the user the power to utilize multi core PC's for carrying out multiple simulations simultaneously. Hereby an ensemble of simulations may be completed faster than the standard sequential method. Thus, the multi core functionality reduces the overall simulation time when doing scenario runs or optimisation runs.

The simultaneous simulations may be used with all the simulation options. In the case of *Scenario runs* or *Sensitivity analysis* all the parameter sets to be evaluated by the model are submitted for execution at the beginning of the simulations. When all parameter sets are evaluated, the AutoCal simulation is finished. In the case of *Parameter optimisation* only the *Population Simplex Evolution* algorithm can be applied for simultaneous execution. For each iteration step in the algorithm the population of parameter sets to be evaluated are submitted for execution. When all the parameter sets of the population are evaluated on the individual processes, the main job processes the results and determines a new population of parameter sets to be evaluated, which are then submitted to the job queue for execution. The AutoCal simulation is finished when one of the stopping criteria of the algorithm has been reached.



Simultaneous simulations

Number of processors available: 4

Number of simultaneous simulations: 4

The number of simultaneous simulations should not exceed the number of processors nor the number of licenses available.

Use single thread engine

Figure 1.9 Simultaneous simulations page

Number of processes available

Informs the user of the number of processors available

Number of simultaneous simulations

The user selected number of simultaneous simulations to be carried out

Use single thread engine

By default auto calibration will only use one core per individual simulation i.e. the individual runs in the ensemble will not distribute the load on multiple cores. The latter is only of importance if the engine being launched can utilize multiple processors.

Selecting the number of simultaneous simulations

The book keeping of which cores are used when is handled by the auto calibration tool. All that is required on the user side is to decide how many of the cores on the PC should be used. This number should be chosen based on

1. The number of cores available on the PC. There is no gain in launching more simultaneous simulations than the number of cores available on the PC. The interface informs the user of the cores available.
2. The number of simulations that the license grants you access to. This number may vary depending on the contents of your license file. If you are uncertain of the number of simulations you can carry out, the information may be retrieved through the license administration interface, The latter is located under your MIKE Powered by DHI installation shortcut in the start menu. Look for the model in question and find the number in the Max User column.



The number should be selected as the smallest of the two numbers.

1.10 Start AutoCal Simulation

To start an AutoCal simulation choose:

Run | Simulation

See also Figure 1.10.

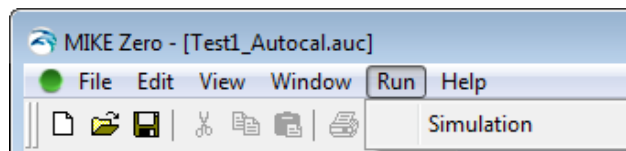


Figure 1.10 Start AutoCal simulation

1.11 Output

1.11.1 General output files

AutoCal produces two general output files:

- A log file that contains summary information about the AutoCal simulation. The log file is named MyAutocalRun.log where MyAutocalRun is the user-specified name for the AutoCal .auc input file. The file is saved in the working directory.
- A file that contains results from the individual model simulations, including the evaluated parameter set and the calculated output measures and objective functions. The file is named MyAutocalRun.dat and is saved in the working directory. The result file is tab delimited and can be directly imported into a spreadsheet.

1.11.2 Sensitivity analysis output

If the sensitivity analysis option is chosen, AutoCal produces a result file that contains the calculated sensitivity coefficients of each parameter with respect to the different output measures and objective functions. The file is named MyAutocalRun_Sensitivity.dat and is saved in the working directory. The result file is tab delimited and can be directly imported into a spreadsheet.

Local sensitivity analysis

In the case of local sensitivity analysis the result file contains the following:



- The parameter set and corresponding output measures and objective functions for the point where the local sensitivity analysis has been performed.
- Scaled sensitivity coefficients for each parameter of the specified output measures and objective functions.
- Parameter covariance matrix in terms of the standard deviations of the parameters and the correlation matrix. It should be noted that the calculated parameter covariance is related to the transformed parameter values and not their native values.

In order to compare the local sensitivity coefficients between parameters of different scales of magnitude scaled sensitivity values are calculated as

$$S_{i, scale} = S_i(\theta_{i, upper} - \theta_{i, lower}) \quad (1.21)$$

where S_i is the calculated un-scaled sensitivity coefficient described in Section 1.6.2, and $\theta_{i, upper}$ and $\theta_{i, lower}$ are the specified upper and lower limits of the parameter. The scaled sensitivities provide a ranking of the parameters with respect to the importance of the parameters for the considered output measure or objective function. Higher scaled sensitivity values (absolute values) indicate more sensitive parameters.

As a rule of thumb, parameters are said to be insensitive if their scaled sensitivity value is less than about 0.01-0.02 times the maximum scaled sensitivity value (absolute value). However, care should be taken using this as a strict threshold measure. Since the sensitivity coefficients are evaluated only around the initial parameter set, they reflect the local sensitivities only. At other locations in the parameter space the sensitivity coefficients may be very different, especially if the simulation model is highly non-linear in its parameter-output interaction.

1.11.3 Optimisation output

If the parameter optimisation option is chosen, AutoCal produces a result file that contains the results of the optimisation. The file is named MyAutocal-Run_Optimisation.dat and is saved in the working directory. The result file is tab delimited and can be directly imported into a spreadsheet.

In the log file a summary of the optimisation results is written, including the best parameter set and corresponding objective function value for each iteration loop.

When the stopping criterion of the optimisation run is met, AutoCal performs a final model run using the optimised parameters. The result of this run is written in the last line of the MyAutocalRun.dat file. The model parameter files contain the optimised parameter values.



The results using the optimised parameter set is performed in model sub-folder `_Process1`.

Shuffled Complex Evolution and Population Simplex Evolution

For each iteration loop performed in the SCE or PSE optimisation the result file `MyAutocalRun_Optimisation.dat` contains the population of parameter sets and corresponding objective functions sorted with respect to the aggregated objective function value. This file should be used as the initial sample file for a subsequent SCE or PSE optimisation that continues the optimisation.

1.12 Error handling

When AutoCal performs a model simulation, the return code from the called program is checked. In the case an error in the model simulation has occurred for a given parameter set, e.g. by creating instabilities, an error return code is received by AutoCal (a return value different from 0). In such a case the output measures and objective functions are given a delete value of -99, which are written to the output files.

Depending on the simulation option chosen in AutoCal, error return codes from the called program are handled differently:

- In the case the *Scenario runs* option is chosen AutoCal continues with the next scenario.
- In the case the *Sensitivity analysis* options is chosen AutoCal is halted. In this case the sensitivity coefficients and the parameter covariance matrix cannot be calculated.
- In the case the *Parameter optimisation* option is chosen, the optimisation continues and the parameter set that gave an error in the simulation model is penalised in the optimisation by assigning the aggregated objective function a penalty value of 10^{30} . However, if a large number of model runs return error codes, a general model failure is suspected and AutoCal is halted.

If the simulation model does not provide a return code, AutoCal offers another possibility for error handling. When a model run is started, AutoCal creates an empty file called `AutocalSimErr.dat` that is placed in the process directory. When the model run finishes, AutoCal checks the file, and if it is not empty it is assumed that the model simulation has failed. In this case AutoCal handles the simulation in the same way as when it receives an error return code as described above.

To use this facility, it is necessary to include as part of the model simulation an option that writes an error message (or any dummy string) to the `Autocal-SimErr.dat` file if an error occurs during the model simulation. If an error mes-



sage is written to the file, the file can be saved as part of the AutoCal run for later inspection by using the *Save Output Files* option.



2 Examples

The examples contained herein have been sorted according to the model applied. The first example is fairly simple and the following examples have increasing complexity.

2.1 MIKE 11

2.1.1 Example 1

The setup used in the example is a river network including a Branch1 connected to a Branch2 approximately midway. The two upper bounds are discharge bounds and the downstream boundary is a water level boundary. See the setup for details.

The objective of the example is to calibrate the model with respect to bed resistance, i.e. Manning's M, given a measured water level timeseries downstream of the junction. The example is included as Example1\Test1-Auto-cal.auc. The setup for generation of the artificial measurements is included in the subfolder named Measurements.

Parameter optimisation, HD Parameters

The measured water level time series is artificial in the way that it is produced prior to the calibration by running the model with a Manning number of 30. From a validation point of view this is interesting since the correct result of the optimisation is known. The correct calibrated model must of course have a Manning number of 30.

Simulation specifications

MIKE 11 produces results in res11 file whereas AutoCal evaluates objective functions by comparing dfs0 files. Hence, the .hd11 file specifies that time series output is to be generated additionally. See the .hd11 file.

As Model Parameter file the HD11 file of the MIKE11 setup is specified since that is where the Manning number is specified. AutoCal automatically generates a template file Example1\Test1_Autocal.HD11. This file is edited and the Manning number is marked for optimisation by giving it the value 1.01e-035.

Finally, the Parameter optimisation is chosen as the Simulation option.

Model Parameters

The model parameters table is partly filled out automatically. AutoCal lists all the parameters recognised for optimisation and allows the user to specify Name, Parameter type, Initial Value, Lower bound, Upper bound and Transformation. We give the parameter the Name ManningM, set the Parameter



type to Variable, let the manning number vary between 10 and 100 with an initial value of 50. Finally, the transformation is set to real.

Objective Functions

The objective function specification is the specification of the measure we want to use to quantify the quality of the calibration. Since the only measurements we have in this example is the discharge in Branch1 at chainage 88827, we will use that for our objective function.

AutoCal minimises an aggregation of one or more objective functions. Each objective function may consist of several so-called output measures. For the present example one objective function is defined. We call it RMS_H and specify it as weighted sum.

As output measure we specify a measure that we call RMS_H_Branch1_87826. The measure is specified as the RMSE of the difference between the simulated water level and the measured water level in Branch1, chainage 87826. By specifying the weight as 1 and the function name as RMS_H the measure will contribute to the objective function called RMS_H with a weight of 1. Since we only have one output measure in the current example the concept of aggregation of objective functions constructed of several output measures may seem a little tedious. For other just slightly more complicated situations the concept proves very powerful.

Parameter Optimisation

The parameters for the optimisation are left as the default values with the exception of the population size which is set to 8 and the maximum No of model evaluations, which is reduced to 80. Normally one should prefer to end the optimisation by meeting the convergence criteria. The convergence criterion is a measure of the relative change in best objective function value in the last number of loops of the optimisation where the number of loops of convergence is also user input. For the current example in which we use artificial measurements we do have the problem, however, that the best objective function will have a value of zero corresponding to a perfect fit. In this situation, which will (sadly) only happen for artificial measurements, the use of a relative change convergence criteria leads to evaluation of a ratio between two measures that are both approaching zero. For this reason the current optimisation will need to be terminated by the maximum no of model evaluations criterion.

Results

AutoCal produces 2 output files: Test1-Autocal.dat and Test1-Autocal_Optimisation.dat.

The file Test1-Autocal.dat shows the enumerated parameter (ManningM), output measure (RMS_H_Branch1_87826) and objective function (RMS_H)



for the different model evaluations performed during the optimisation. The last line is the optimum. The results are shown in Figure 2.1.

The file Test1-Autocal_Optimisation.dat shows the population of parameters and corresponding objective functions sorted with respect to the aggregated objective function (in the case RMS_H).

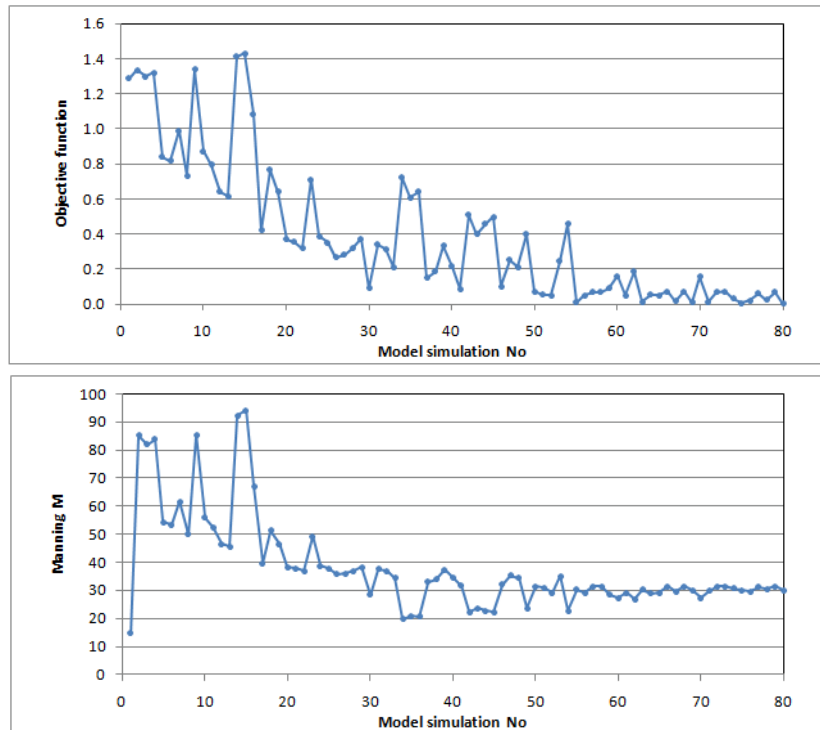


Figure 2.1 Optimisation iteration history.

2.1.2 Example 2

The setup used in the example is a river network including a Branch1 connected to a Branch2 approximately midway (reused from example1). The two upper bounds are discharge bounds and the downstream boundary is a water level boundary. Besides receiving water from the upstream boundaries the river network also receives water from Catchment1 and Catchment2. Branch1 receives inflow as distributed lateral inflow from Catchment1 upstream the connection point and Branch2 receives distributed lateral inflow from Catchment2. Both catchments are NAM catchments. See the setup for details.

The objective of the example is to calibrate the model with respect to the NAM parameters, given timeseries of discharge measured at three different locations in the river network. We start with a sensitivity analysis to determine



the most important parameters to be included in the calibration. This part is included as Example2\Test2-Autocal.auc.

After this the actual calibration is made using parameter optimisation on the parameters depicted from the sensitivity analysis. This part is included as Example2\Test2-Optimisation.auc.

The measured discharge timeseries are artificial in the way that they are produced prior to the calibration by running the model with a set of NAM parameters.

The setup for generation of the artificial measurements is included in the subfolder named Measurements.

Sensitivity Analysis, RR Parameters

The two catchments modelled with the NAM method are described with 7 parameters each. In order to determine which of the 14 parameters that are more sensitive and should be included in the calibration a sensitivity analysis is performed. The sensitivity is evaluated around the default parameter values and the influence of changing them one at a time is calculated.

Simulation specification

MIKE 11 produces results in res11 file whereas AutoCal evaluates objective functions by comparing dfs0 files. Hence, the .hd11 file specifies that time series output is to be generated additionally. See the .hd11 file.

As Model Parameter file, the RR11 file of the MIKE11 setup is specified since that is where the NAM parameters are specified. AutoCal automatically generates the template file Example2\Test2_Autocal.RR11. This file is edited and all the NAM parameters are marked as parameters by specifying their values as 1.01e-035 ...1.14e-035. Finally, Sensitivity analysis is chosen as the Simulation option.

Model Parameters

The model parameter table is partly filled out automatically. AutoCal lists all the parameters recognised for the sensitivity analysis and allows the user to specify Name, Parameter type, Initial Value, Lower bound, Upper bound and Transformation. The specified parameters are listed in Table 2.1.

Table 2.1 Model parameter specification for sensitivity analysis.
For the parameters TOF1, TIF1, TOF2 and TIF2 0.99 is the largest value accepted by the engine

Name	Initial value	Lower bound	Upper bound
UMax1	20	5	40
LMax1	200	50	400
CQOF1	0.5	0	1



Table 2.1 Model parameter specification for sensitivity analysis.
For the parameters TOF1, TIF1, TOF2 and TIF2 0.99 is the largest value accepted by the engine

Name	Initial value	Lower bound	Upper bound
CKIF1	750	500	1000
CK1	24	6	48
TOF1	0.5	0	0.99
TIF1	0.5	0	0.99
UMax2	20	5	40
LMax2	200	50	400
CQOF2	0.5	0	1
CKIF2	750	500	1000
CK2	24	6	48
TOF2	0.5	0	0.99
TIF2	0.5	0	0.99

AutoCal calculates scaled sensitivity coefficients that are multiplied with the specified parameter interval. Hence, the specification of lower and upper bounds effects the result although these are derivatives evaluated around the initial value.

Objective Functions

The objective function is the specification of the measure we want to use to quantify the quality of the calibration and hence use to measure parameter sensitivity. The measurements in this example are discharge timeseries at three locations.

We define an objective function as a weighted sum of the squared value of each output measure. We name the objective function Q_RMS. The output measures are defined as the root mean square of the residual between simulated and measured water level in the three measurement points. The three output measures are named RMS_Q_Branch1_39166, RMS_Q_Branch1_87827 and RMS_Q_Branch2_36933, respectively.

Sensitivity Analysis

The sensitivity analysis parameters are left unaltered as the default values. This means that we will do a local sensitivity analysis (currently only available choice), use forward difference approximation with a 1% of the parameter interval as perturbation value. This means that AutoCal will evaluate the objective function, Q_RMS, at the initial parameter set and at 14 parameter sets where one parameter at a time has been increased with 1% of its parameter interval. The calculated value is used to make a two point forward finite difference approximation to the derivative of the initial parameter set.



Results

The results of the sensitivity analysis can be found in the file Test2-Autocal_ - Sensitivity. The calculated Scaled sensitivity coefficients are listed in Table 2.2.

Table 2.2 Calculated scaled sensitivity coefficients

Parameter	Scaled sensitivity coefficient	Rank
Umax1	89.1	7
Lmax1	-48.3	9
CQOF1	991	2
CKIF1	-0.8	12
CK1	-32.4	10
TOF1	-340	5
TIF1	-1.0	11
Umax2	78.1	8
Lmax2	-182	6
CQOF2	1525	1
CKIF2	-0.08	14
CK2	-362	4
TOF2	-580	3
TIF2	-0.1	13

The most sensitive parameters are the overland flow runoff coefficient for both catchments (CQOF1 and CQOF2), followed by the thresholds for overland flow (TOF1 and TOF2) and time constant for overland flow routing for catchment 2 (CK2). Intermediate sensitive parameters are the maximum water content in surface and root zone storages (Umax1, Umax2, Lmax1, Lmax2). The least sensitive parameters are time constant for interflow (CKIF1 and CKIF2) and threshold value for interflow (TIF1 and TIF2).

Parameter Optimisation, RR Parameters

Having made the sensitivity analysis we will turn back to the calibration. Based on the sensitivity analysis results the 10 most sensitive parameters are included in the calibration (parameters ranked 1 to 10 in Table 2.2).

The setup is included as Example2/Test2-Optimisation.auc.

Simulation specification

The same specifications and .rr11 template file applied for the sensitivity analysis are used, and Parameter Optimisation is chosen as the Simulation option.



Model Parameters

In the model parameters table the parameters that are not included in the optimisation are set to constant (CKIF1, TIF1, CKIF2, TIF2). These parameters will then be set to their initial values given in Table 2.1. To further simplify the calibration a fixed relation between the maximum water contents in surface and root zone storages is used. It is assumed that Lmax is 10 times larger than Umax. In the model parameters table Lmax1 and Lmax2 is set in the Equation field, respectively, $10 \cdot U_{\max 1}$ for Lmax1 and $10 \cdot U_{\max 2}$ for Lmax2.

Objective Functions

The same output measures and objective function as applied for the sensitivity analysis are used.

Parameter Optimisation

The population size is set to 40, and the maximum number of model evaluations is set to 800.

Results

The optimised parameters are shown in Table 2.3 and compared with the reference parameters. Since not all NAM parameters have been included in the optimisation some deviations are seen, especially for the Umax and Lmax parameters.

Table 2.3 Reference and optimized parameters

Parameter	Used for generation of measurements	Parameter optimization
UMax1	10	16.0
LMax1	100	160
CQOF1	0.3	0.31
CK1	12	13.0
TOF1	0.4	0.43
UMax2	25	19.2
LMax2	250	192
CQOF2	0.4	0.41
CK2	24	22.5
TOF2	0.5	0.58

Scenario runs

Finally, AutoCal is used to run three different scenarios using, respectively, reference parameters (used to generate measurements), initial parameters, and optimised parameters. The setup is included as Example2/Test2_Optimisation_Validation.auc.



Model Parameters

All parameters are changed to Parameter type variables.

Scenario Runs

The parameters for the three scenarios are specified.

Save Output Files

We want to save output at the three measurement locations. Time series data are saved in setup/SimulatedResults.dfs0. For each scenario run this file is saved. The saved file SimulatedResults_1.dfs0, SimulatedResults_2.dfs0 and SimulatedResults_3.dfs0 are saved in the process subfolders Set-up_Process1, etc.

Results

Time series of simulated discharge in the three measuring locations are shown in Figure 2.2.

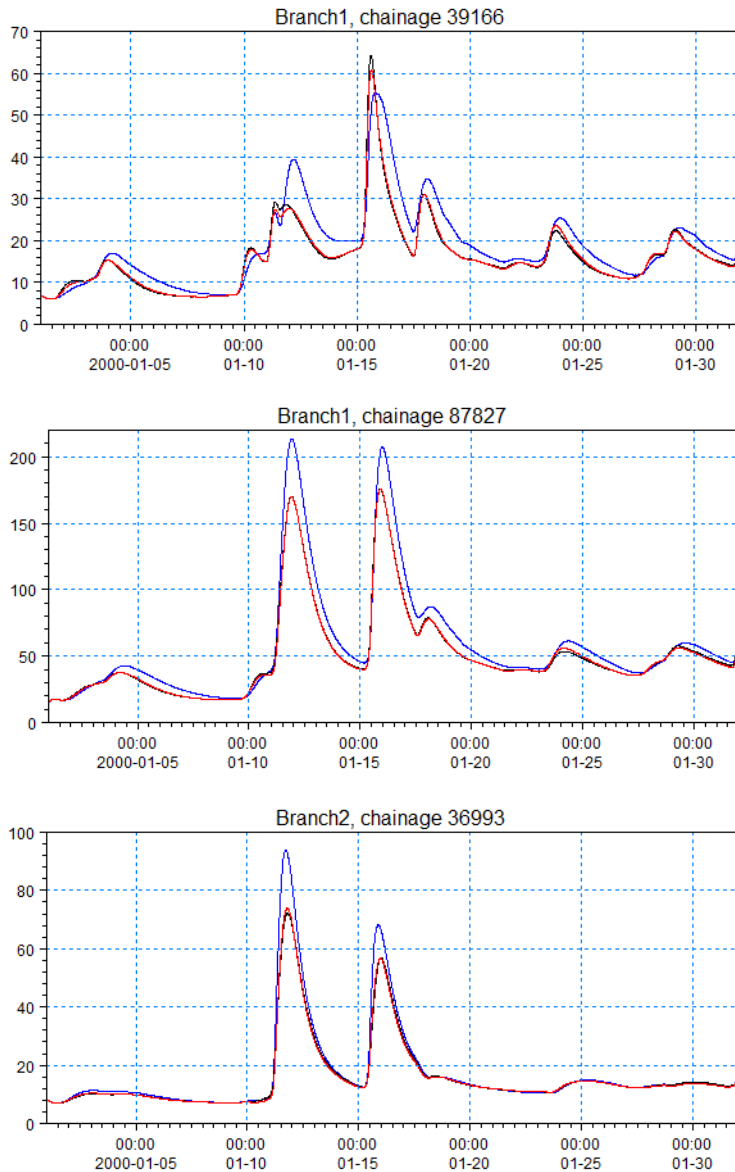


Figure 2.2 Discharge in the three measurement locations.
 Blue line: Initial parameters,
 Black line: Reference parameters,
 Red line: Optimised parameter



2.1.3 Example 3

The example demonstrates calibration of the AD module included in MIKE11. The calibration is made by parameter optimisation on the dispersion coefficient for each branch and the decay coefficient for the component studied.

The setup used in the example is a river network including a Branch1 connected to a Branch2 approximately midway (reused from example1). The two upper bounds are discharge bounds and the downstream boundary is a water level boundary.

The example is included as Example3\Test3-Autocal.auc. The HD model is the model calibrated in example 1.

The objective of the example is to calibrate the model with respect to the AD parameters, given timeseries of concentration measured at three different locations in the river.

Parameter optimisation, AD Parameters

The measured concentration timeseries are artificial in the way that they are produced prior to the calibration by running the model with a dispersion coefficient of 5 m²/s for Branch1 and 10 m²/s for Branch2. The decay coefficient is set to 0.01 per hour. The setup for generation of the artificial measurements is included in the subfolder Measurements.

Simulation specifications

MIKE 11 produces results in res11 file whereas AutoCal evaluates objective functions by comparing dfs0 files. Hence the model simulation sequence when using AutoCal together with MIKE 11 is first a MIKE 11 simulation and subsequently a transformation of some parts of the MIKE 11 results saved in the res11-format to dfs0-format. The utility program called res11read performs the transformation from res11 to dfs0. The simulation sequence is therefore defined as follows:

1. ..\Setup\Test3.sim11
2. ..\Setup\ExtractResults.res11read

The 'ExtractResults.res11read' file specifies the command for the res11read program. The locations from which simulated concentrations are extracted from the .res11 file are specified in the selection.txt file.

As Model Parameter file, the AD11 file of the MIKE11 setup is specified since that is where the dispersion and decay coefficients are specified. The file Example3\Test3.AD11 is selected and AutoCal automatically generates the template file Example3\Test3_Autocal.AD11. This file edited and the dispersion and decay coefficients are marked for optimisation by giving the values 1.01e-035, 1.02e-035, 1.03e-035 and 1.04e-035.



Finally, the Parameter optimisation is chosen as the Simulation option.

Model Parameters

There are four model parameters: the global dispersion coefficient, the global decay coefficient and the upstream and downstream dispersion coefficient in Branch2. The first three are defined as variables whereas the latter is set as dependent and equal to the dispersion coefficient in the upstream end of the branch.

Objective Functions

There are three output measures defined which are combined into one objective function. The output measures compare simulated and observed concentrations at two locations in Branch1 and one location in Branch2 using the RMSE statistic.

Parameter Optimisation

Population size is set to 20, and the maximum No of model evaluations is set to 300.

Results

The results of the auto-calibration are shown in the plots in Figure 2.3. It is seen that the two dispersion coefficients and the decay rate are calibrated to the expected values.

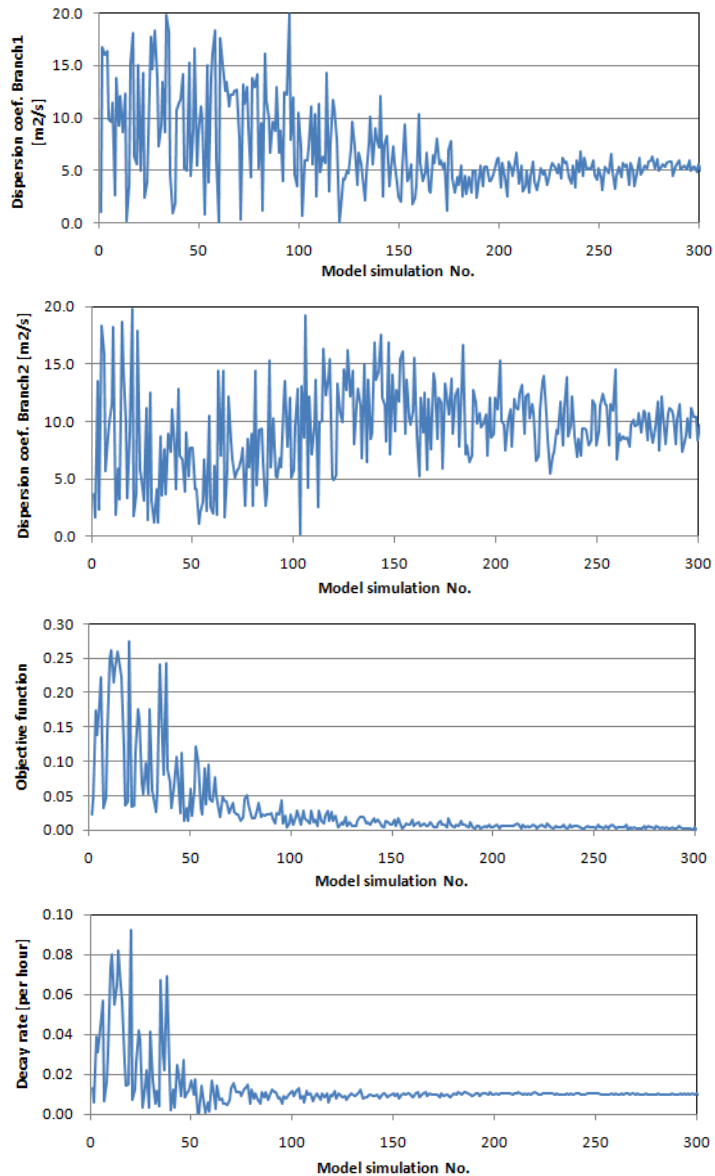


Figure 2.3 Result from auto calibration

2.1.4 Example 4

This example demonstrates calibration of the HD module included in MIKE11. The calibration is made by parameter optimisation of the Manning numbers specified in the cross section editor.

This example is included as Example4\ac-dyn-max.auc.



The objective of the example is to calibrate the model with respect to Manning's n , given maximum water level measured in two flood events at two different locations in the river.

Parameter optimisation, XNS11 Parameters

The Manning numbers specified in the XNS11 file can be auto-calibrated through use of the feature "Resistance Number Interpolation..." found in the "Cross Section" menu of the cross section editor. The data specified in this table are saved in a separate file with the same name as the .xns11 file but with extension .xns11r. This is an ASCII file as required for auto-calibration.

We want to calibrate the Manning's n at three chainages (0, 55970 and 108080) and interpolated values should apply in-between.

The maximum water levels are measured at chainage 27395 and 76810 during two flood events. Measured data are stored in ac-obs-peak1.dfs0 and ac-obs-peak2.dfs0. Each file contains two items (one for each location) but there is only one value in each item and this is the measured maximum water level during each of the periods covered by the file. The remaining values are delete values.

The measured maximum water levels are artificial and obtained by running the model with Manning's n values of, respectively, 0.05, 0.04 and 0.03 at the three chainages. The setup for generation of the artificial measurements is included in the subfolder Measurements.

Simulation specifications

The .hd11 file specifies that time series output is to be generated additionally. See the .hd11 file.

The model simulation sequence simply specifies the name of the MIKE 11 .sim11 file, and the model parameter file is the .xns11r file. When pressing the "Edit" button, the AutoCal editor will open Notepad to allow for editing the .xns11r template file.

AutoCal treats .xns11r file somewhat differently than other parameter files used for auto-calibration. The data in .xns11r are to be interpolated into Manning numbers in all intermediate cross sections. When using the cross section editor this happens automatically, but when changing the .xns11r file externally using AutoCal the Manning numbers still need to be interpolated and processed data needs to be recalculated. This is all taken care of by AutoCal.

Using Notepad the Manning number (for uniform resistance distribution) at the three locations is set to $1.01e-035$, $1.02e-035$ and $1.03e-035$.

Finally, the Parameter optimisation is chosen as the Simulation option.



Model Parameters

There are three Manning numbers shown in the table and all three are selected as variable and with initial, minimum and maximum values of 0.035, 0.015 and 0.080 s/m^{1/3}. The parameters are named n1, n2 and n3.

Objective Functions

There are four output measures (two flood events at two locations) defined that are combined into one objective function. The output measures compare measured and simulated maximum water level. AutoCal cannot compare time series of measured and simulated water levels during the simulation as only the maximum measured value is known. AutoCal is configured to do so by setting the statistic type to "Error of max". AutoCal selects the maximum simulated water level in the same period as covered by the target .dfs0 file. I.e. the autocalibration using "Error of max" is not sensitive to the timing of peaks. Note that in this example the dfs0 files with observed data contains only one valid data set for each item. However, the period which the dfs0 files cover (mainly with empty/delete values) is important as it is used for picking the simulated max values as well.

Parameter Optimisation

Population size is set to 20, and the maximum No of model evaluations is set to 300.

Results

The results of the auto-calibration are shown in the plots in Figure 2.4.

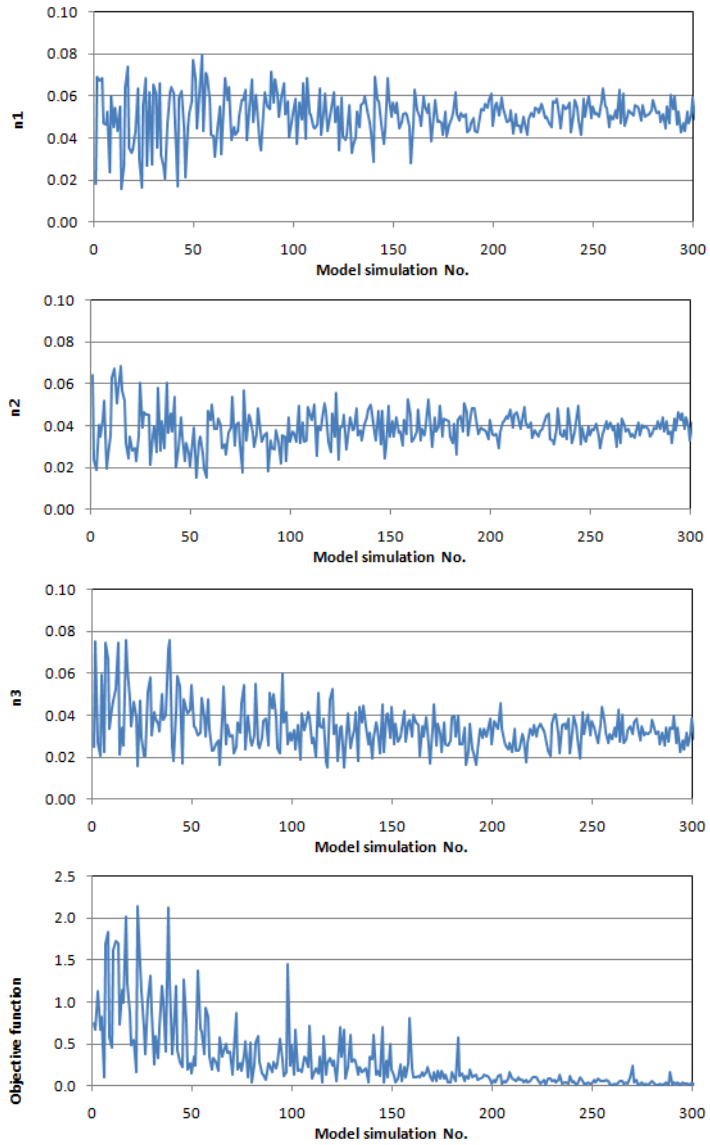


Figure 2.4 Results of auto calibration

2.2 MIKE 21

2.2.1 Example 1

In this example AutoCal performs Parameter Optimisation.

The setup used in the example is a simple MIKE 21 HD FM model describing the increase of salinity in a large shallow reclamation basin that is suddenly subjected to a tidal flush due to a local failure in the bank next to the sea with a tidal water level variation. See the setup for details.

The initial salinity in the basin is low, but after 24 hours the salinity in the corner is supposedly measured to 15 PSU, see Figure 2.5 for location. The objective of this example is to calibrate the dispersion parameter such that the model setup can predict the increase of salinity correctly.

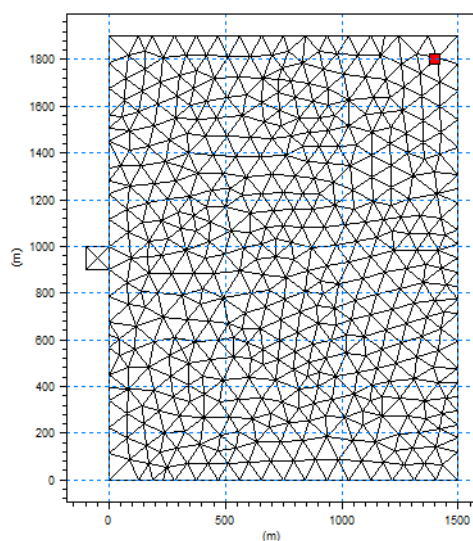


Figure 2.5 Bathymetry of reclamation basin, measuring point is indicated

The example is included as Test1_Autocal.auc. Two subfolders, called "Setup" and "Measurements", are present. The first one contains all the relevant files for the auto-calibration simulation while the second one includes all the measurements/observed data (for Example 1 only one Time Series Dfs0 file is present).

Simulation specifications

Under Simulation specifications, model simulation sequence, model parameter file(s) and simulation option must be specified.

In Example 1 the MIKE 21 setup (Test1.m21fm) is selected for both model simulation sequence and model parameter file because besides producing results it also contains the parameter chosen for optimization. Once Test1.m21fm has been specified as model parameter file, AutoCal will automatically produce a template MIKE 21 FM file called Test1_Autocal.m21fm. Test1_Autocal.m21fm is a copy of Test1.m21fm which is then edited to mark



the dispersion coefficient for optimization. The horizontal dispersion coefficient is given the value 1.01e-035.

'Parameter Optimization' is chosen as simulation option.

Model Parameters

The model parameters table is partly filled out automatically. AutoCal lists all the parameters recognised for optimisation and allows the user to specify Name, Parameter type, Initial Value, Lower bound, Upper bound and Transformation. The parameter is given the Name DispersionC, set the Parameter type to Variable, and let the horizontal dispersion coefficient vary between 0.05 [m²/s] and 2.0 [m²/s] with an initial value of 1.0 [m²/s]. Finally the transformation is set to real.

In Keyword/Line no, which is filled out automatically, you can see where the parameter being optimized is located.

Objective Functions

The objective function specification is used as a measure for quality of the calibration. Example 1 is only a simple illustrative example aiming to illustrate how to use the auto-calibration tool. Measurements in this case are not real but an assumed value. AutoCal evaluates objective functions by comparing dfs0 files therefore real observations should normally be used as target files.

AutoCal minimises an aggregation of one or more objective functions. Each objective function may consist of several so-called output measures. For the present example one objective function ('OF Salinity') is defined. The function is specified as weighted sum of absolute power and it is given a weight value of 1.

'Salinity' is specified as output measure. The measure is specified as the Avg. Error of the difference between the simulated salinity and the measured salinity in the same point within the MIKE 21 domain. By specifying the weight as 1 and the function name as 'OF Salinity' the measure will contribute to the objective function called 'OF Salinity' with a weight of 1.

No aggregation of objective functions is applied.

Parameter Optimisation

Population Simplex Evolution is chosen as optimization method.

The parameters for optimisation can either be left as default values or user-specified. In this case Population size is set to 8, No of points in simplex is set to 2, maximum No of model evaluations is reduced to 80 (default is 500), number of loops of convergence is set to 5 and minimum relative change is set to 0.001.



Normally ending the optimisation by meeting the convergence criteria should be preferred. Convergence criteria are a measure of the relative change in best objective function value in the last number of loops of convergence where the number of loops of convergence is also user-specified.

Save Output Files

AutoCal allows output files from the individual model simulation runs to be saved. The names of the files to be saved are specified in the Output files table. The saved output files from the individual simulation are given an extension in the file name that contains the simulation number. For instance, if the simulation model produces a result file called MyResults.dfs2, the saved files are named MyResults_1.dfs2, MyResults_2.dfs2, etc.

In the current example no Output Files are specified.

Simultaneous Simulations

The number of simultaneous simulations affect the speed of the simulation but not the overall result. You may edit the values according to your hardware setup.

Results

The optimal dispersion coefficient is found to be 1.34. Applying this value in the MIKE 21 model setup will give a salinity of 14.985 PSU at the measuring point which is close to the 'measured' value of 15 PSU.

2.2.2 Example 2

In this example AutoCal performs a number of scenario runs.

The objective of the example is to show how to utilize the scenario run functionality in AutoCal to simulate a number of similar scenarios in one go instead of having to specify an individual setup file for each case.

The setup in this example is a simple MIKE 21 HD model describing the tidal flow in and out of an estuary. The neap tide, mean tide and spring tide are to be simulated and the related tidal amplitudes are 1.5 m, 2.5 m and 3.5 m, respectively. The results are later compared by the water level in a reference point, see Figure 2.6 for location.

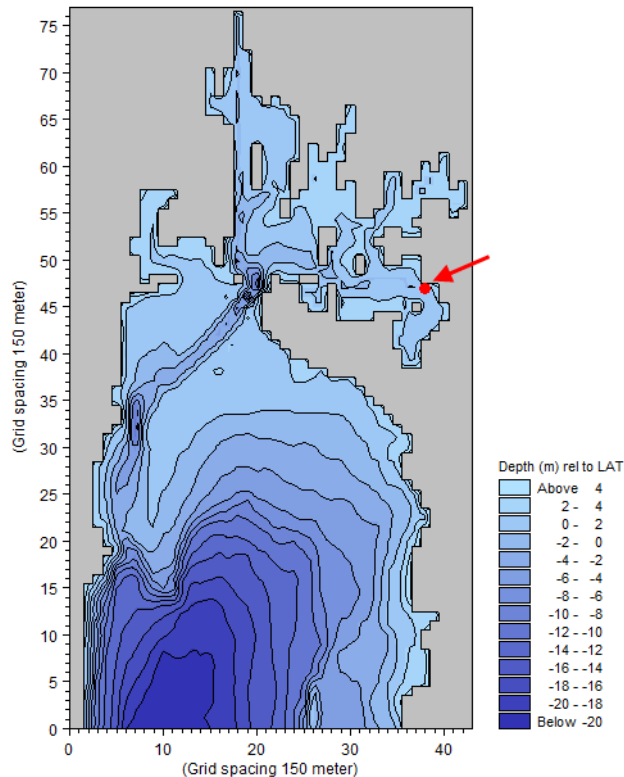


Figure 2.6 Bathymetry of estuary. Reference point for comparison is indicated.

The example is included as Test2_Autocal.auc. A subfolder, called "Setup", is present. This folder contains the relevant files for the scenario simulations. Pls. run an initial simulation with Test2.m21 first in order to generate the template output files for AutoCal to utilize.

Simulation specifications

Under Simulation specifications, model simulation sequence, model parameter file(s) and simulation option must be specified.

In Example 2 the MIKE 21 setup (Test2.m21) is selected for both model simulation sequence and model parameter file because besides producing results it also contains the parameter chosen for optimization. Once Test2.m21 has been specified as model parameter file, AutoCal will automatically produce a template MIKE 21 file called Test2_Autocal.m21. Test2_Autocal.m21 is a copy of Test2.m21 which is then edited to mark the tidal amplitude at the boundary as variable parameter. The tidal amplitude is given the value 1.01e-035.

'Scenario runs' is chosen as simulation option.



Model Parameters

The model parameters table is partly filled out automatically. AutoCal lists all the parameters recognised for optimisation and allows the user to specify Name, Parameter type, Initial Value, Lower bound, Upper bound and Transformation. The parameter is given the Name Amplitude, set the Parameter type to Variable, and let the tidal amplitude vary between 1.0 [m] and 4.0 [m] with an initial value of 2.0 [m]. Finally the transformation is set to real.

In Keyword/Line no, which is filled out automatically, you can see where the parameter being optimized is located.

Objective Functions

The objective function specification is used as a measure for quality of the calibration. As this AutoCal simulation is used for scenario runs and does not contain any calibration, objective functions are not used. You may skip this dialog.

Scenario runs

The Scenario type is specified as multiple runs. You may then specify the variable parameters for each run.

In this example you specify the tidal amplitude for each of the three cases, i.e. 1.5 m, 2.5 m and 3.5 m, respectively.

Save Output Files

AutoCal allows output files from the individual model simulation runs to be saved. The names of the files to be saved are specified in the Output files table. The saved output files from the individual simulation are given an extension in the file name that contains the simulation number. For instance, if the simulation model produces a result file called MyResults.dfs2, the saved files are named MyResults_1.dfs2, MyResults_2.dfs2, etc.

In the current example two output files are specified: flow.dfs2 and elevation.dfs0. The latter file contains the water level in the reference point and will later be used for a comparison plot.

Simultaneous Simulations

The number of simultaneous simulations affect the speed of the simulation but not the overall result. You may edit the values according to your hardware setup.

Results

After running the scenarios the elevation output file from each scenario is used to plot the water levels shown in Figure 2.7.

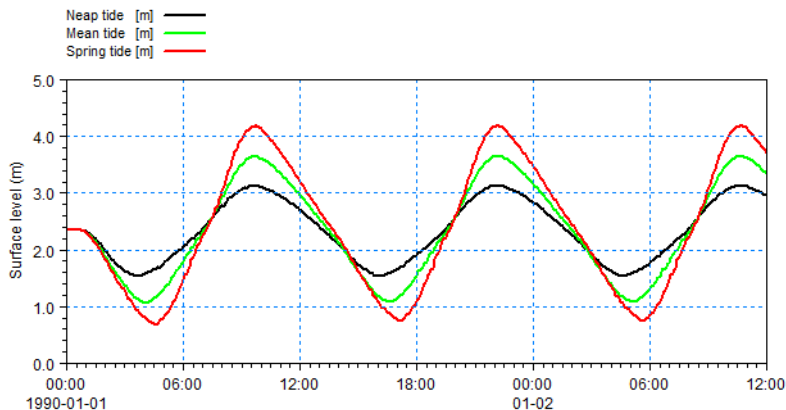


Figure 2.7 Resulting water level in reference point for the three scenario runs.

2.3 MIKE SHE

2.3.1 Example 1

Example 1 is the simplest of the examples included in the AutoCal-MIKE She example collection.

The setup used in the example is a simple MIKE SHE model including only the Saturated Zone (SZ), which is composed of one layer (aquifer). Constant uniform precipitation is applied and rainfall completely infiltrates. See the setup for details.

The objective of the example is to calibrate the model with respect to the aquifer horizontal hydraulic conductivity, given a measured SZ head elevation in a random point of the domain.

The example is included as Example1.auc. Two subfolders, called "Setup" and "Measurements", are present. The first one contains all the relevant files for the auto-calibration simulation while the second one includes all the measurements/observed data (for Example 1 only one Time Series Dfs0 file is present).

Simulation specifications

Under Simulation specifications, model simulation sequence, model parameter file(s) and simulation option must be specified.

In Example 1 the MIKE SHE setup (Example1.she) is selected for both model simulation sequence and model parameter file because besides producing results it also contains the parameter chosen for optimization. Once Example1.she has been specified as model parameter file, AutoCal will automatically produce a template MIKE SHE file called Example1_Autocal.she.



Example1_Autocal.she is a copy of Example1.she which is then edited to mark the aquifer horizontal hydraulic conductivity for optimization. The horizontal hydraulic conductivity is given the value 1.01e-035.

Parameter Optimization is chosen as simulation option.

Model Parameters

The model parameters table is partly filled out automatically. AutoCal lists all the parameters recognised for optimisation and allows the user to specify Name, Parameter type, Initial Value, Lower bound, Upper bound and Transformation. The parameter is given the Name HHydrCond, set the Parameter type to Variable, and let the horizontal hydraulic conductivity vary between 0.0001 [m/s] and 0.005 [m/s] with an initial value of 0.000222 [m/s]. Finally the transformation is set to logarithmic.

In Keyword/Line no, which is filled out automatically, you can see where the parameter being optimized is located.

Objective Functions

The objective function specification is used as a measure of comparison of measured results with observations for the calibration. Example 1 is only a simple illustrative example aiming to illustrate how to use the auto-calibration tool. Measurements in this case are not real but consist of output results of a previous MIKE SHE simulation. AutoCal evaluates objective functions by comparing dfs0 files therefore real observations should normally be used as target files.

AutoCal minimises an aggregation of one or more objective functions. Each objective function may consist of several so-called output measures. For the present example one objective function (MyFunc) is defined. MyFunc is specified as weighted sum and it is given a weight value of 1.

MyOutPut is specified as output measure. The measure is specified as the RMSE of the difference between the simulated SZ head elevation and the measured SZ head elevation in the same point within the model domain. By specifying the weight as 1 and the function name as MyFunc the measure will contribute to the objective function called MyFunc with a weight of 1.

No aggregation of objective functions is applied since only one objective function is defined.

Parameter Optimisation

Population Simplex Evolution is chosen as optimization method.

The parameters for optimisation can either be left as default values or user-specified. In this case Population size is set to 10, No of points in simplex is



set to 2 and maximum No of model evaluations is reduced to 50 (default is 500).

Normally ending the optimisation by meeting the convergence criteria should be preferred. Convergence criteria are a measure of the relative change in best objective function value in the last number of loops of the optimisation where the number of loops of convergence is also user-specified.

Save Output Files

AutoCal allows output files from the individual model simulation runs to be saved. The names of the files to be saved are specified in the Output files table. The saved output files from the individual simulations are given an extension in the file name that contains the simulation number. For instance, if the simulation model produces a result file called MyResults.dfs2, the saved files are named MyResults_1.dfs2, MyResults_2.dfs2, etc.

In the current example no Output Files are specified.

Simultaneous simulations

Multi-core PC's can be effectively utilised by distributing the individual model runs. The number of simultaneous simulations is set according to the hardware configuration and number of available licenses.

Results

By using 50 model evaluations AutoCal finds a horizontal hydraulic conductivity of 0.00199 [m/s].

Results from the optimisation can be found in the files Example1.dat and Example1_Optimisation.dat. Example1.dat shows the evaluated parameter (HHydrCond), output measure (MyOutput) and objective function (myFunc) for the different model runs in the optimisation. The last line is the optimum solution. Example_Optimisation.dat shows the population of parameter sets and corresponding objective functions for the different loops of the optimisation sorted with respect to the aggregated objective function (in this case myFunc).

2.3.2 Example 2

The setup used in Example 2 is a relatively simple MIKE SHE model including only the Saturated Zone (SZ), which is composed of three layers. Constant uniform precipitation is applied, rainfall completely infiltrates and two pumping wells are included in the SZ. See the setup for details.

The objective of the example is to calibrate the model with respect to horizontal and vertical hydraulic conductivities of layer 1, horizontal hydraulic con-



ductivity of layer 2 and rainfall (recharge), given measured SZ head elevations in correspondence of the two pumping wells.

The example is included as Example2.auc. Two subfolders, called "Setup" and "Measurements", are present. The first one contains all the relevant files for the auto-calibration simulation while the second one includes all the measurements/observed data.

Simulation specifications

Under simulation specifications, model simulation sequence, model parameter file(s) and simulation option must be specified.

In Example 2 the MIKE SHE setup (Example2.she) is selected for both model simulation sequence and model parameter file because besides producing results it also contains the parameters chosen for optimization. Once Example2.she has been specified as model parameter file, AutoCal will automatically produce a template she file called Example2_Autocal.she.

Example2_Autocal.she is a copy of Example2.she which is then edited to mark the parameters for optimization. Rainfall is given the value $1.01e-035$, horizontal hydraulic conductivity of layer 1 is given the value $1.02e-035$, vertical hydraulic conductivity of layer 1 is given the value $1.03e-035$ and horizontal hydraulic conductivity of layer 2 is given the value $1.04e-035$

Parameter Optimization is chosen as simulation option.

Model Parameters

The model parameters table is partly filled out automatically. AutoCal lists all the parameters recognised for optimisation and allows the user to specify Name, Parameter type, Initial Value, Lower bound, Upper bound and Transformation. The four parameters are given the names Recharge, HHydrCond_layer1, VHydrCond_layer1 and HHydrCond_layer2 respectively.

For Recharge the Parameter type is set to Variable. Its value can vary between 5 [mm] and 12 [mm] with an initial value of 8 [mm]. The transformation is set to real.

For HHydrCond_layer1 the Parameter type is set to Variable. Its value can vary between 0.001 [m/s] and 0.006 [m/s] with an initial value of 0.0022 [m/s]. The transformation is set to logarithmic.

For VHydrCond_layer1 the Parameter type is set to Dependent. In fact, in the current example, the vertical hydraulic conductivity relates to the horizontal hydraulic conductivity according to the following equation $0.1 * HHydrCond_layer1$. Neither Upper/Lower bound nor initial value need to be specified. The transformation is set to logarithmic.



For HHydrCond_layer2 the Parameter type is set to Variable. Its value can vary between 0.0005 [m/s] and 0.004 [m/s] with an initial value of 0.0015 [m/s]. The transformation is set to logarithmic.

In Keyword/Line no, which is filled out automatically, you can see where the parameter being optimized is located.

Objective Functions

The objective function specification is used as a measure for quality of the calibration. Measurements are not real but consist of output results of a previous MIKE SHE simulation. AutoCal evaluates objective functions by comparing dfs0 files therefore real observations should normally be used as target files.

AutoCal minimises an aggregation of one or more objective functions. Each objective function may consist of several so-called output measures. For the present example one objective function (MyFunc) is defined. MyFunc is specified as weighted sum and it is given a weight value of 1.

Well_01 and Well_02 are specified as output measures. Both measures are specified as the Avg. Error of the difference between the simulated SZ head elevation and the measured SZ head elevation in correspondence of the two pumping wells. By specifying the weight as 1 and the function name as MyFunc the measure will contribute to the objective function called MyFunc with a weight of 1.

No aggregation of objective functions is applied.

Parameter Optimisation

Population Simplex Evolution is chosen as optimization method.

The parameters for optimisation can either be left as default values or user-specified. In this case Population size is set to 16, No of points in simplex is set to 4 and maximum No of model evaluations is reduced to 160 (default is 500).

Normally ending the optimisation by meeting the convergence criteria should be preferred. Convergence criteria are a measure of the relative change in best objective function value in the last number of loops of convergence where the number of loops of convergence is also user-specified.

Save Output Files

AutoCal allows output files from the individual model simulation runs to be saved. The names of the files to be saved are specified in the Output files table. The saved output files from the individual simulations are given an extension in the file name that contains the simulation number. For instance,



if the simulation model produces a result file called MyResults.dfs2, the saved files are named MyResults_1.dfs2, MyResults_2.dfs2, etc.

In the current example no Output Files are specified.

Simultaneous simulations

Multi-core PC's can be effectively utilised by distributing the individual model runs. The number of simultaneous simulations is set according to the hardware configuration and number of available licenses.

Results

After 160 evaluations the objective function convergence criteria are met. AutoCal finds the following results:

Recharge = 10 [mm]

HHydrCond_layer1 = 0.00199 [m/s]

HHydrCond_layer2 = 0.00145 [m/s]

VHydrCond_layer1 does not appear in the results because it has been set to "Dependent" on HHydrCond_layer1.

Results from the optimisation can be found in the files Example2.dat and Example2_Optimisation.dat. Example2.dat shows the evaluated parameter (HHydrCond), output measure (Well) and objective function (myFunc) for the different model runs in the optimisation. The last line is the optimum solution. Example_Optimisation.dat shows the population of parameter sets and corresponding objective functions for the different loops of the optimisation sorted with respect to the aggregated objective function (in this case myFunc).



INDEX



A	
AD parameters	46
Aggregate measure	19
C	
Comparison statistics	16
Complexes	25
Constant parameter	13
D	
Dependent parameter	13
E	
Equation parser	14
Evolution	25
F	
Finite difference approximation	23
I	
Identification tags	11
L	
Latin hypercube sampling	27
Log file	33
Logarithmic transformation	14
M	
Measurement uncertainties	18
MIKE 11 result file	11
MIKE Zero Toolbox	10
Monte Carlo sampling	27
Multi-objective calibration	19
N	
Number of complexes	26
P	
Parameter Optimisation	51
Parameter perturbation	23
Pareto front	19
Post-processing of model results	10
PSE algorithm	28
S	
Scaled sensitivity values	34
SCE algorithm	25
Scenario runs	54
Sensitivity measures	22
Stopping criteria	27
T	
Template file	11
Transformation functions	19
V	
Variable parameter	13
W	
Weighted sum	18
Weighted sum of absolute values	18
Weighted sum of squares	18