

MIKE C-MAP

Installation Note



DHI A/S headquarters

Agern Allé 5
DK-2970 Hørsholm
Denmark

+45 4516 9200 Telephone

+45 4516 9333 Support

+45 4516 9292 Telefax

mike@dhigroup.com

www.mikepoweredbydhi.com

CONTENTS

MIKE C-MAP Installation Note

1	Introduction	1
2	MIKE C-MAP Installation Step-by-step	2
2.1	Troubleshooting	25
2.1.1	Maps not recognized	25
2.1.2	C-MAP dongle not activated	27

1 Introduction

This note describes how to install MIKE C-MAP Release 2020 and the C-MAP Professional+ digital chart database.

Congratulations with your MIKE C-MAP software package holding the following:

DHI:

- Installation files downloaded from the MIKE Powered by DHI web site or ftp server
- For local and network license:
 - DHI USB Dongle (if this is your first MIKE Powered by DHI product)
 - DHI Software license file: license.dhilic (sent by e.mail)
- For Internet license:
 - Login credentials (sent by e-mail)

C-MAP:

- C-MAP USB dongle – Aladdin eToken PRO (Java 72k)
- C-MAP license file, password.usr (sent by e-mail)
- C-MAP Professional+ digital chart USB

Please note that the Microsoft .NET Framework 4.0 (Web Installer) is required. If not already installed on your PC, you can find it in the prerequisite folder with subfolder name: DotNet4.0. If not installed prior to the installation of MIKE C-MAP, you will be prompted to do so during the installation.

Please note that previous installations of MIKE C-MAP must be un-installed prior to installing MIKE C-MAP Release 2020. This also relates to the C-MAP software components: 'eToken PKI Client' and 'C-MAP Professional SDK Runtime'.

To optimise the view of the displayed data on your pc screen you will during the installation be asked to enter the size of your pc screen (inches), and likewise when starting MIKE C-MAP the first time to measure the size (in millimetres) of a white box displayed on the screen. Please have a ruler ready as well.

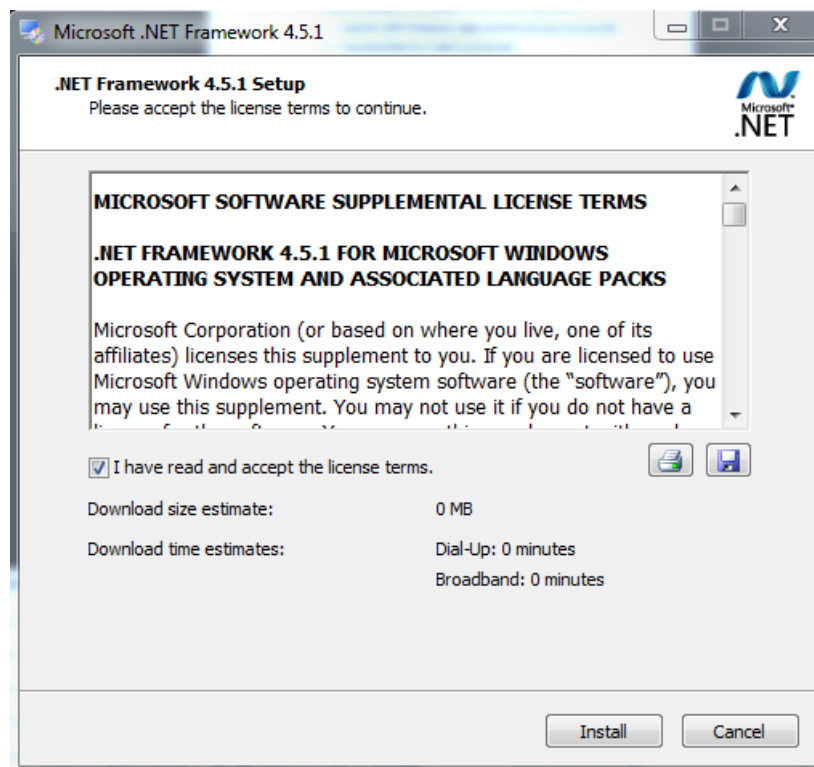
2 MIKE C-MAP Installation Step-by-step

A step-by-step guide on the installation of MIKE C-MAP is given below.

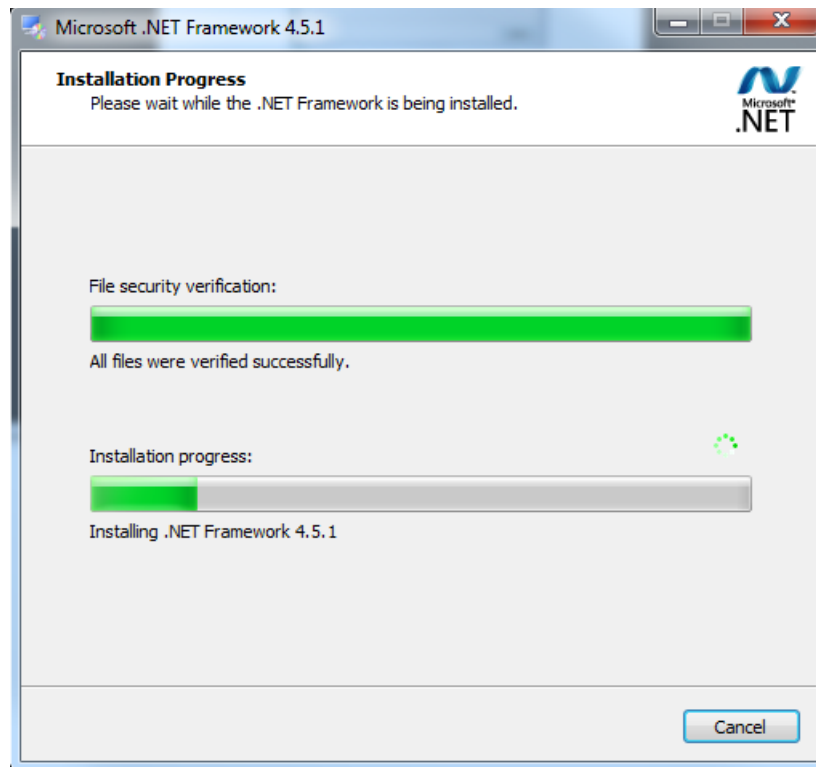
1. Insert the C-MAP Professional+ digital chart USB and copy to your hard disk
2. Copy license files from e-mails to your hard disk
3. Close down all Windows programs currently running on your computer
4. Install Microsoft .NET Framework 4.5.1. In case it already exists, please proceed with step 5.

In case it is not installed, proceed to install .NET Framework 4.5.1 (can be found in the prerequisite folder).

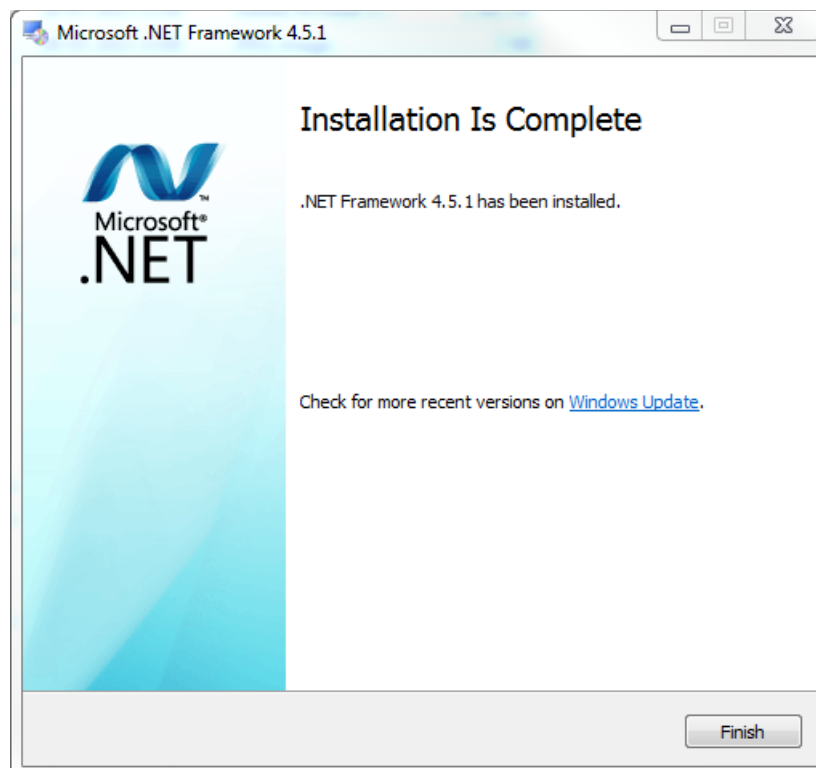
The following install wizard appears for the .NET Framework 4.5.1 Setup:



Read and accept the license conditions. Click 'Install'

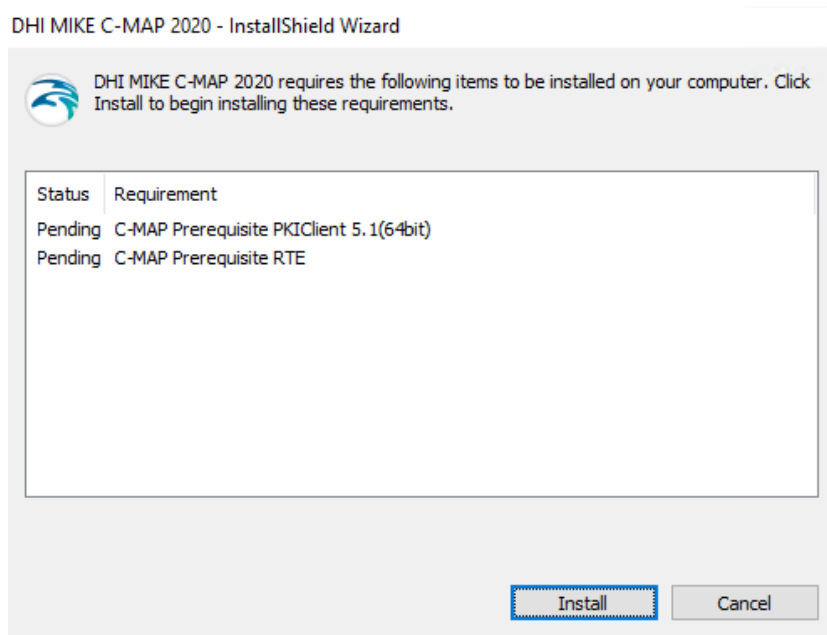


Wait...



Click 'Finish'

5. Make sure that your pc is connected to the Internet
6. Insert the C-MAP USB dongle
7. Click 'No' to install drivers if proposed by Windows
8. Download the zipped MIKE C-Map installation files from the MIKE Powered by DHI web site (www.mikepoweredbydhi.com)
9. Unzip the file and start the installation by running the file 'Setup.exe'
10. An install wizard appears with information on missing pre-installations required, i.e. drivers for MIKE Zero, MIKE C-MAP and C-MAP:

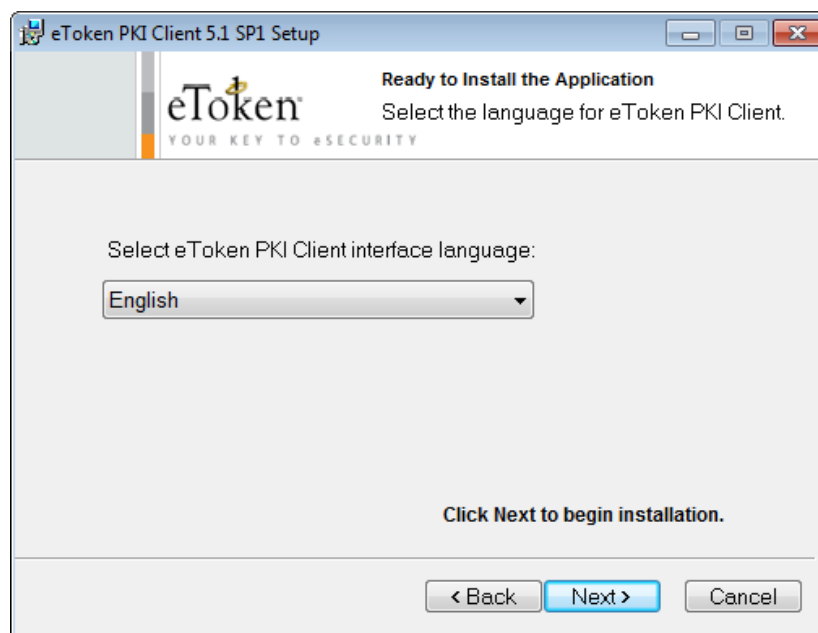


Click 'Install' to install all missing required installations

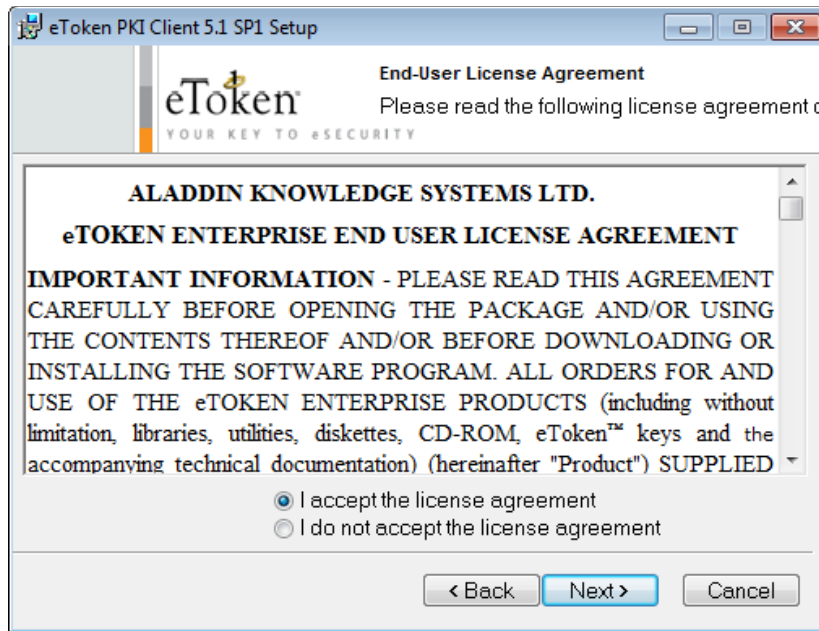
11. After installation of generic drivers for MIKE Zero, the specific drivers for C-MAP application will commence and the following dialogues will appear:



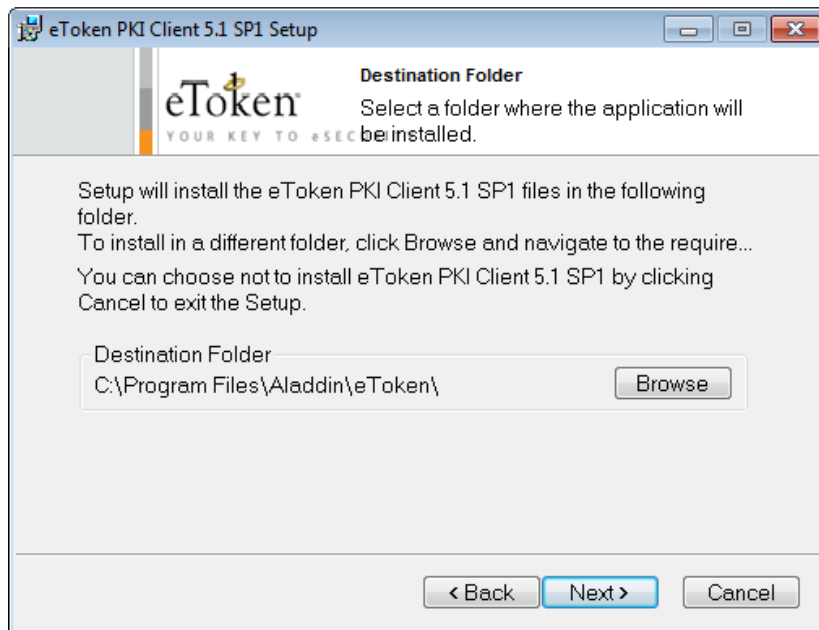
Click 'Next'



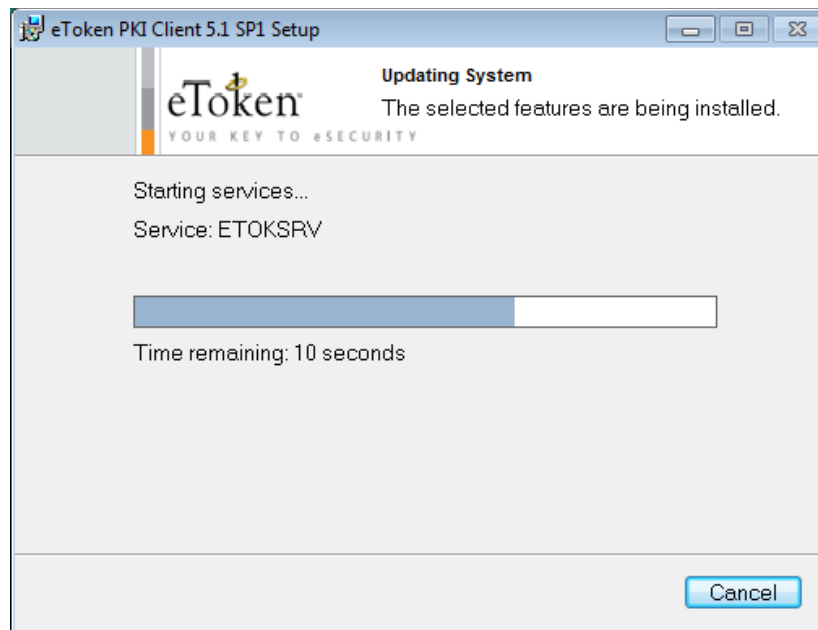
Click 'Next'



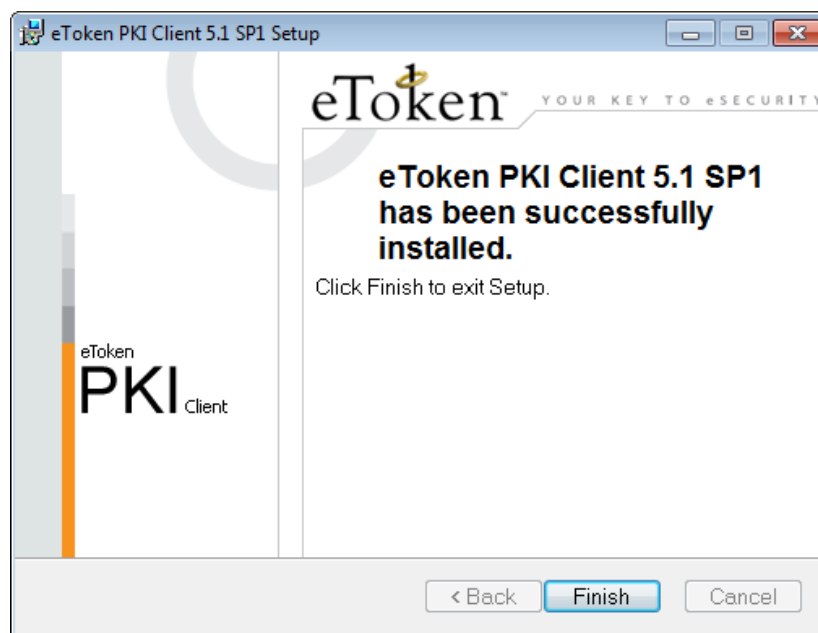
Read and tick 'I accept the license agreement' (if you want to continue) and click 'Next'



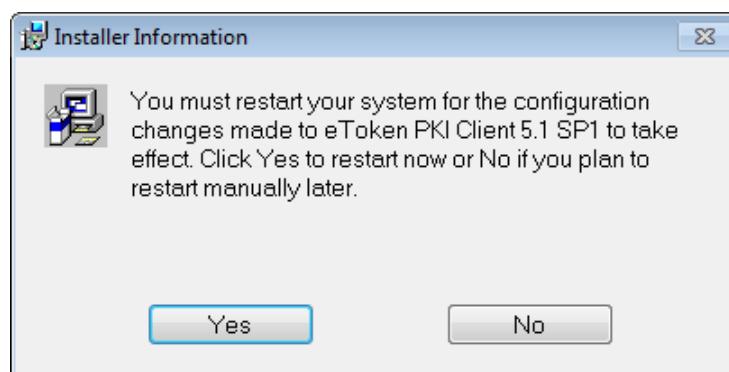
Accept proposed destination folder or browse and click 'Next'



Wait...



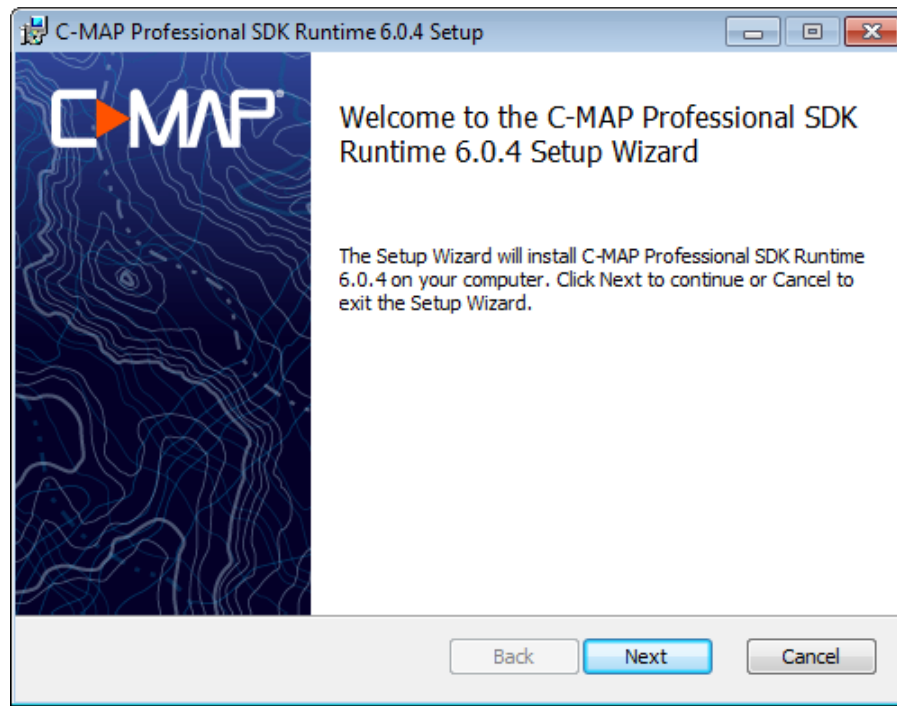
Click 'Finish'



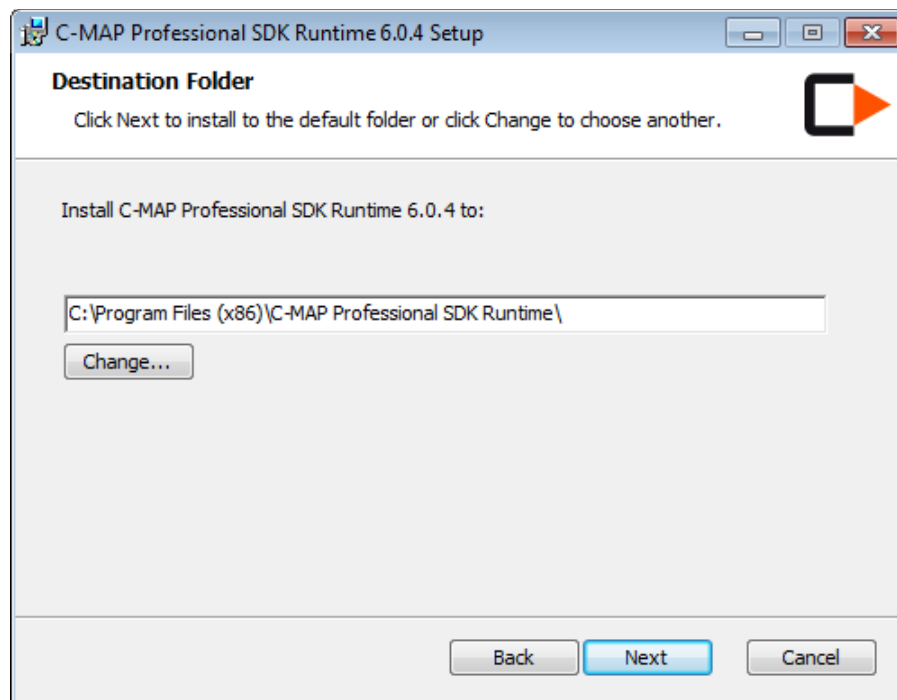
Click 'Yes'.

- The system will restart and the install wizard re-appears with the last pre-installation item.

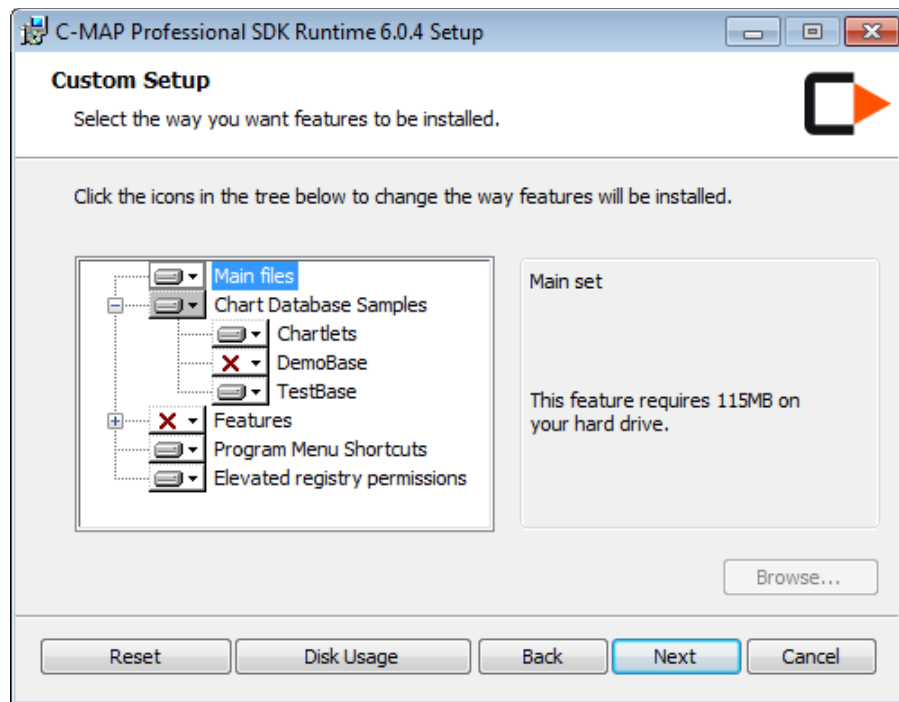
Click 'Install'



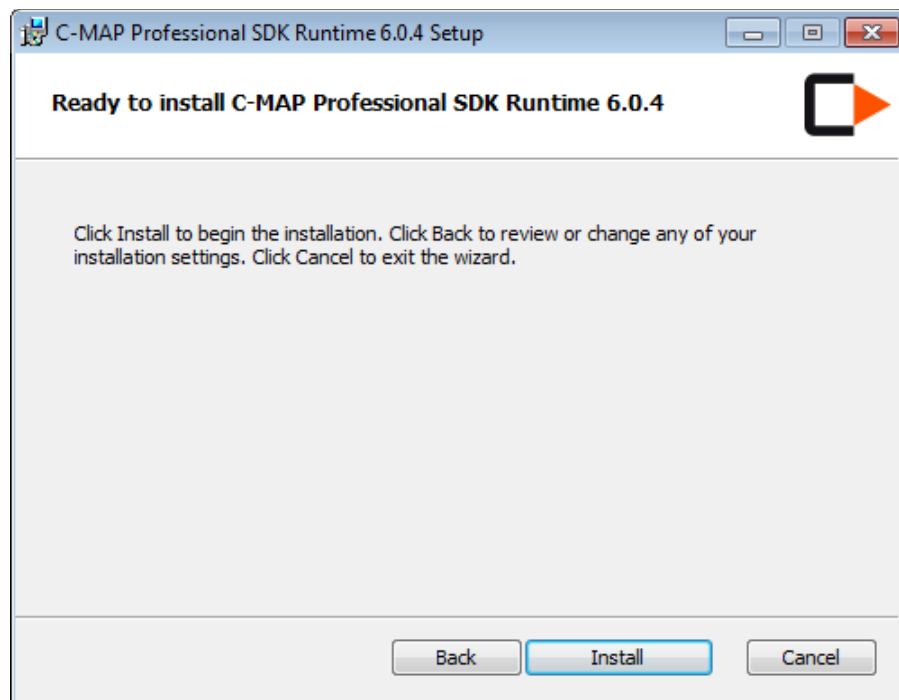
Click 'Next'



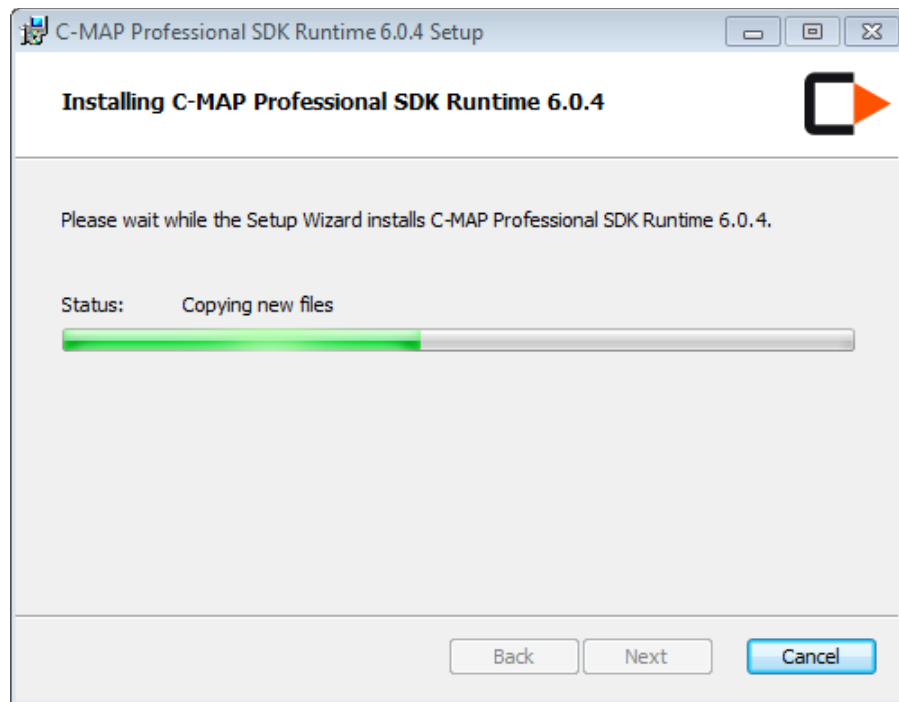
Accept proposed installation folder or browse. Click 'Next'



Unclick Features and accept default Chart Database Samples. Click 'Next'.

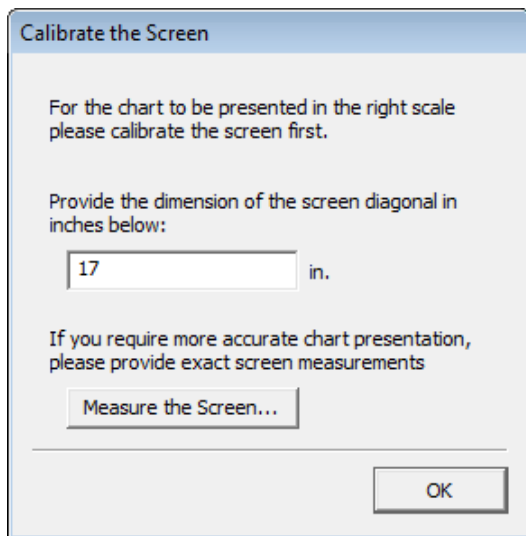


Click 'Install'.

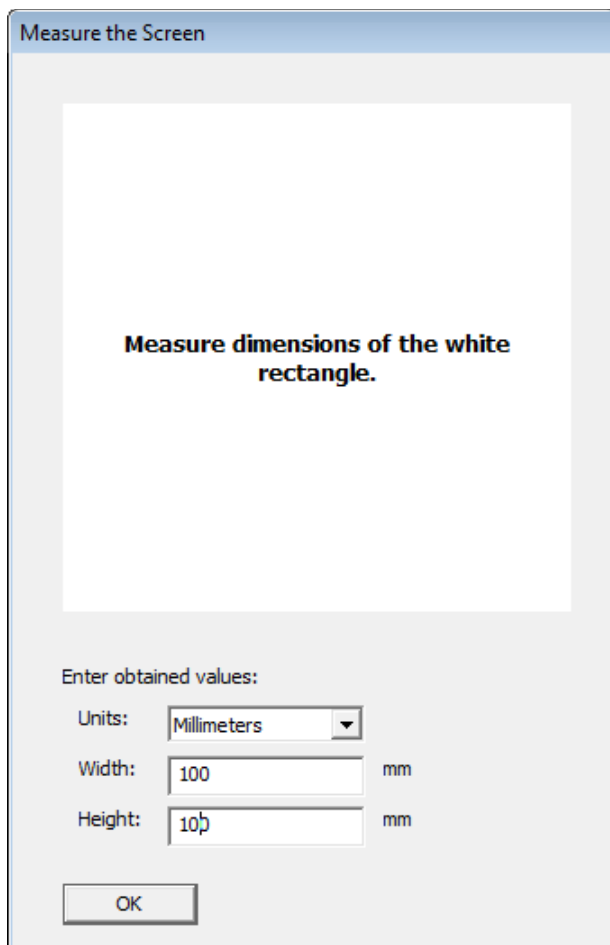


Wait...

A dialogue appears for calibrating the screen display:

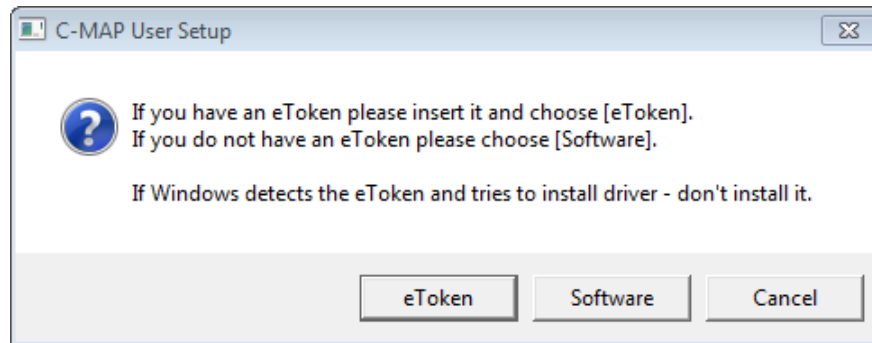


Insert the size of your screen (diagonal in inches) and press the button 'Measure the Screen...'

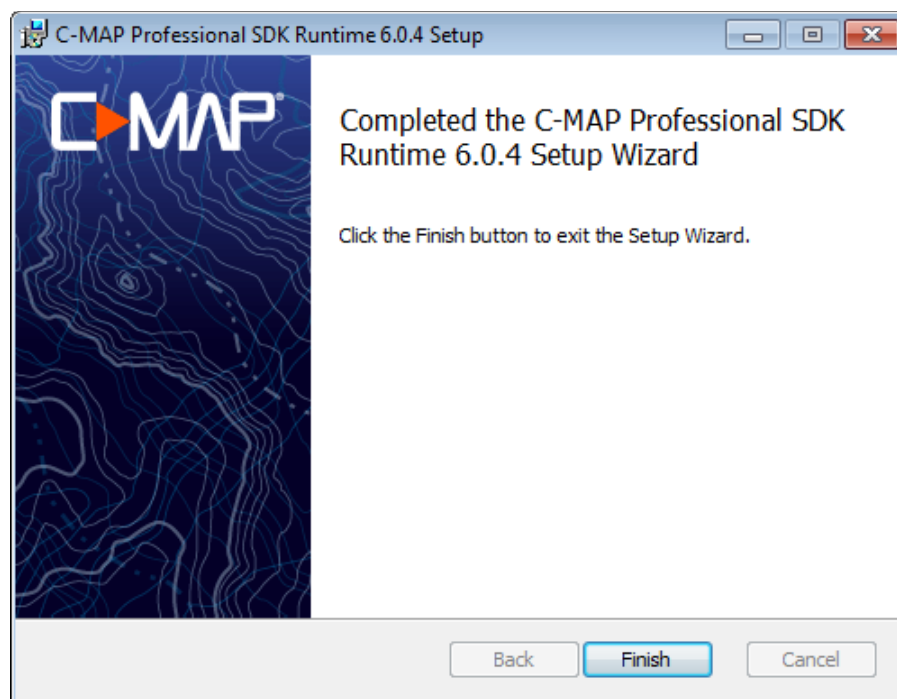


This 'Measure the Screen' dialogue serves to optimise the view of the extracted data on the screen (i.e. to utilise full screen dimension). Measure the width and height of rectangle and click 'OK'

Click 'OK' to continue with the next step in the installation.

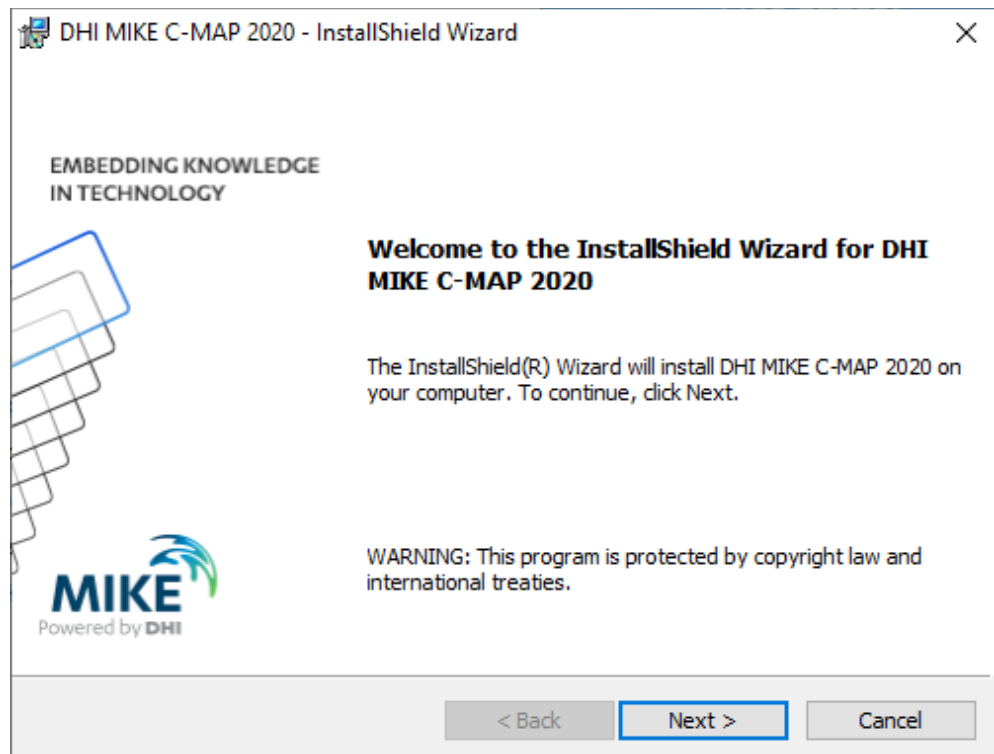


Click 'Yes' to confirm that the eToken is inserted.

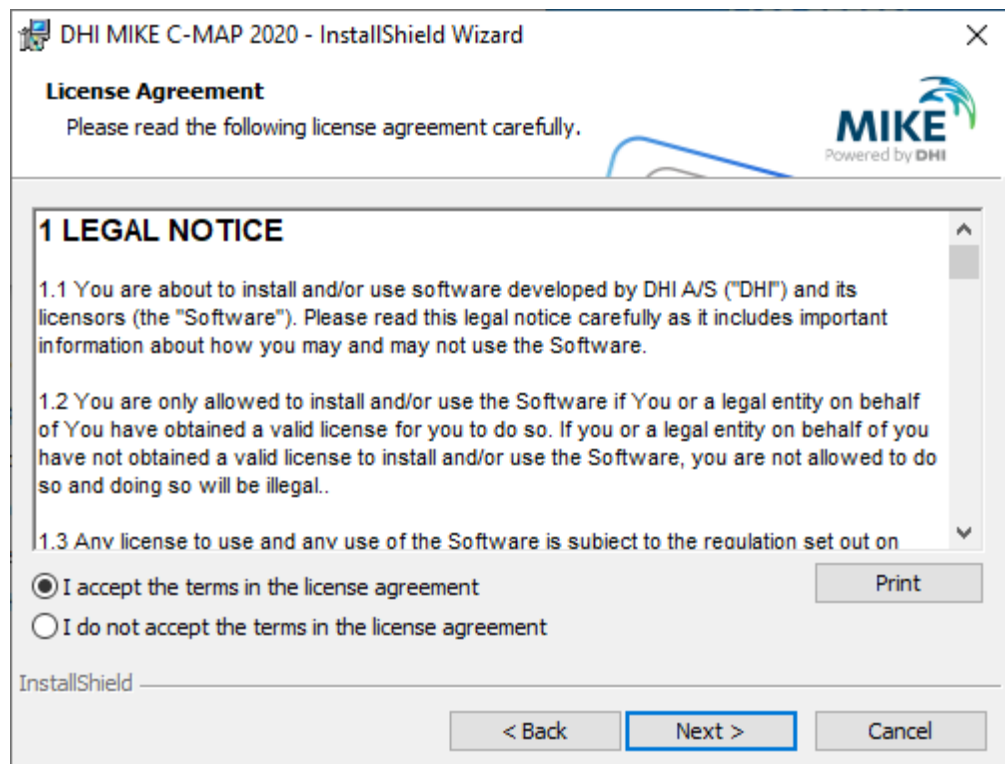


Click 'Finish'

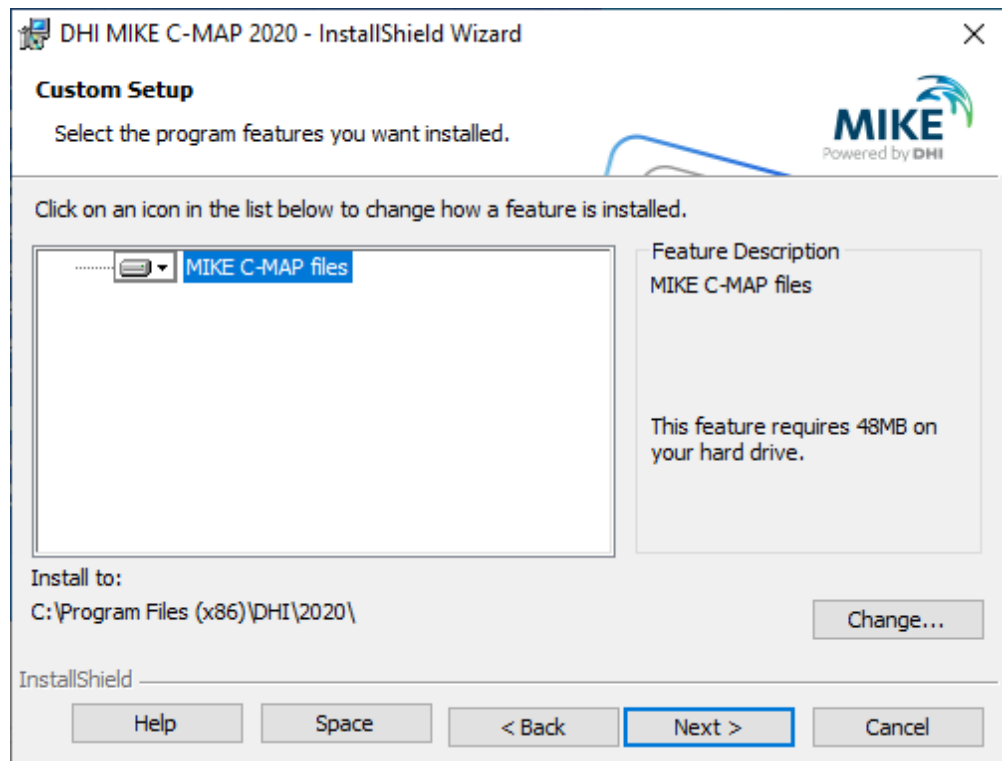
13. Now the MIKE C-MAP InstallShield Wizard appears:



Click 'Next'

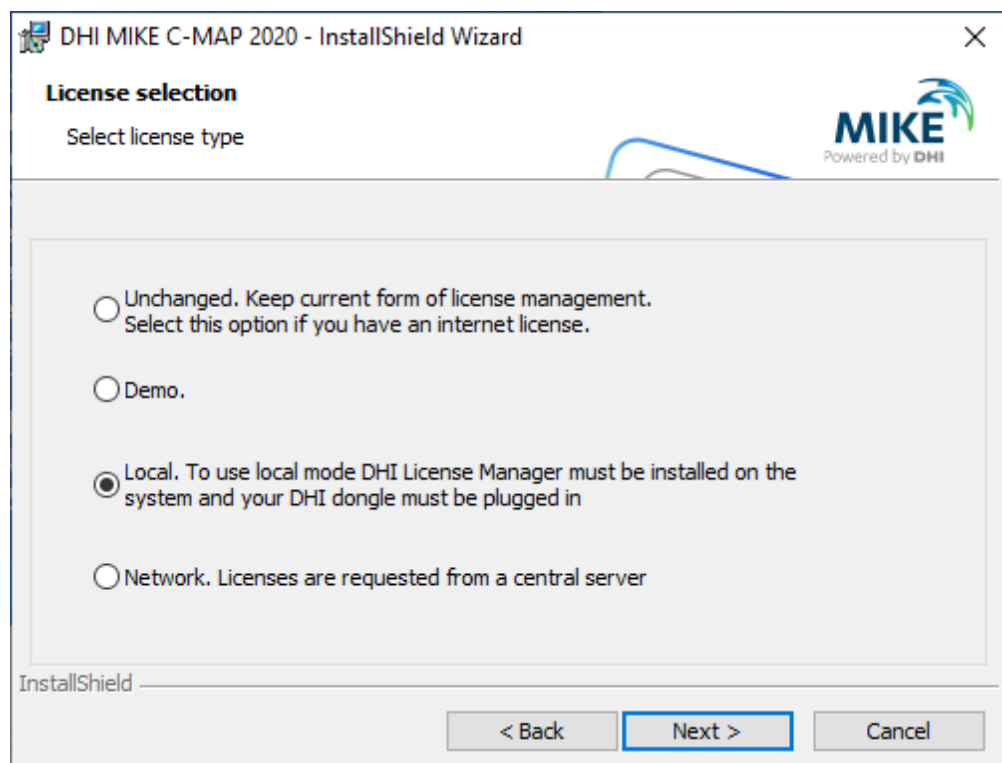


Read the License Agreement and tick 'I accept the terms in the license agreement' to continue and click 'Next'

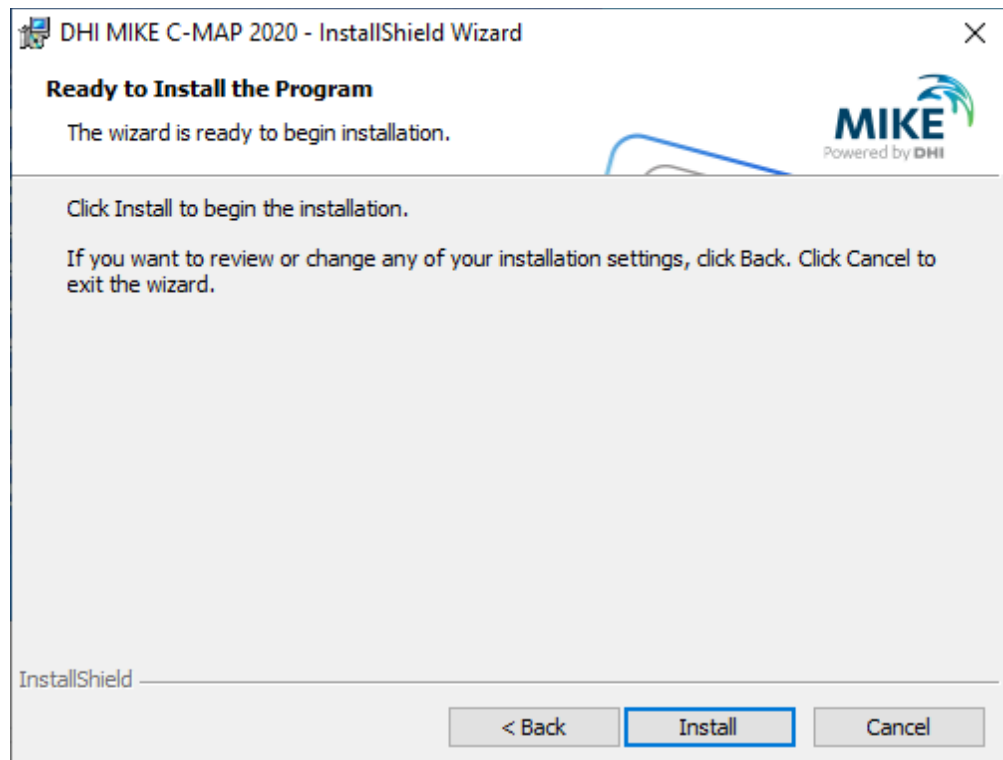


Accept the proposed installation folder or browse for another. Click 'Next'

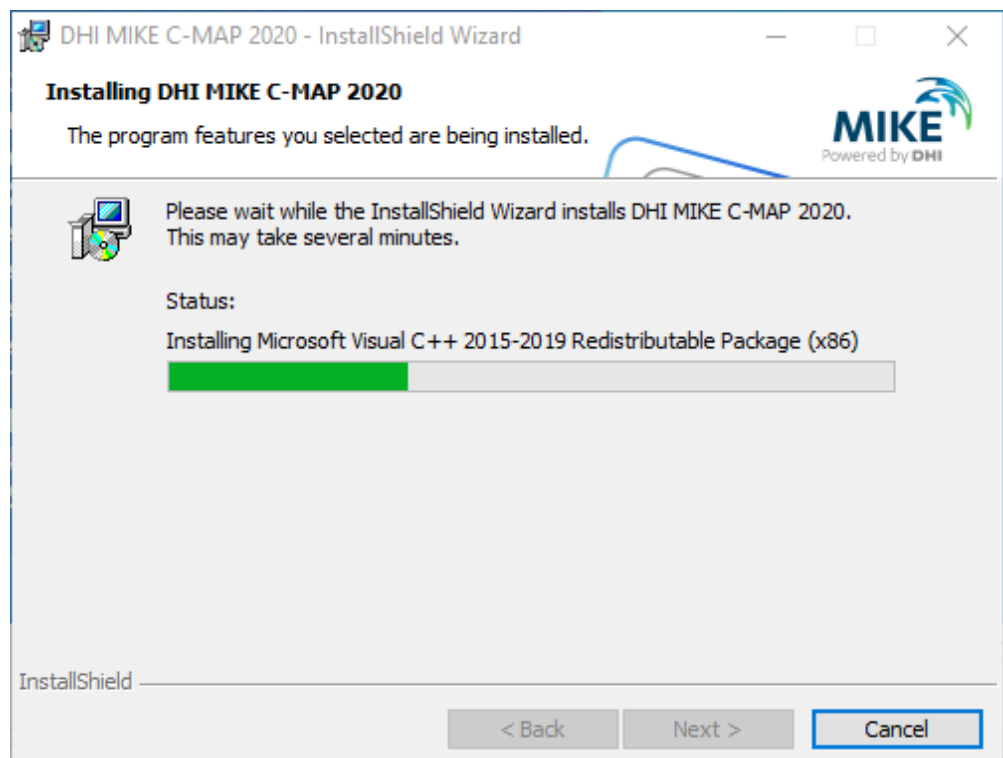
INSERT YOUR DHI DONGLE if not already done.



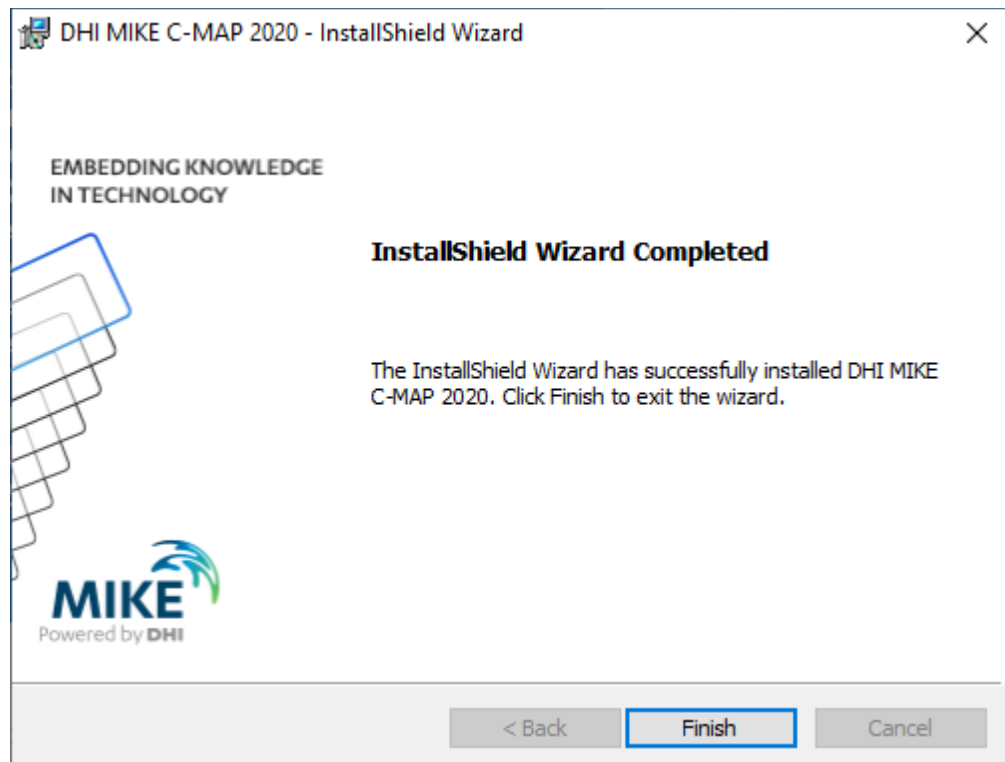
Select 'Local' as type of license management and click 'Next'



Click 'Install'

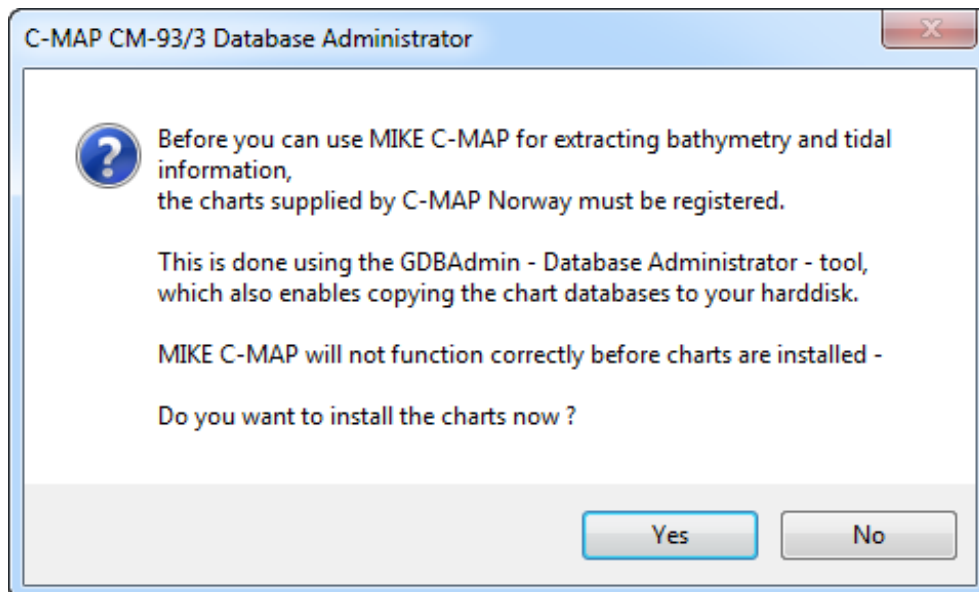


Wait until the 'InstallShield Wizard Complete' appears:

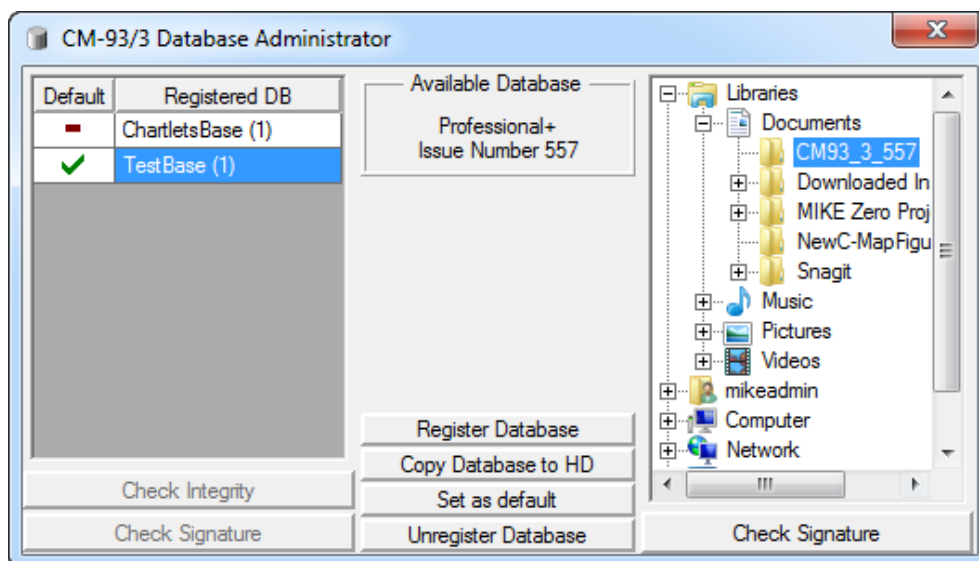


Click 'Finish' and wait for the C-MAP chart database administrator dialogue to appear.

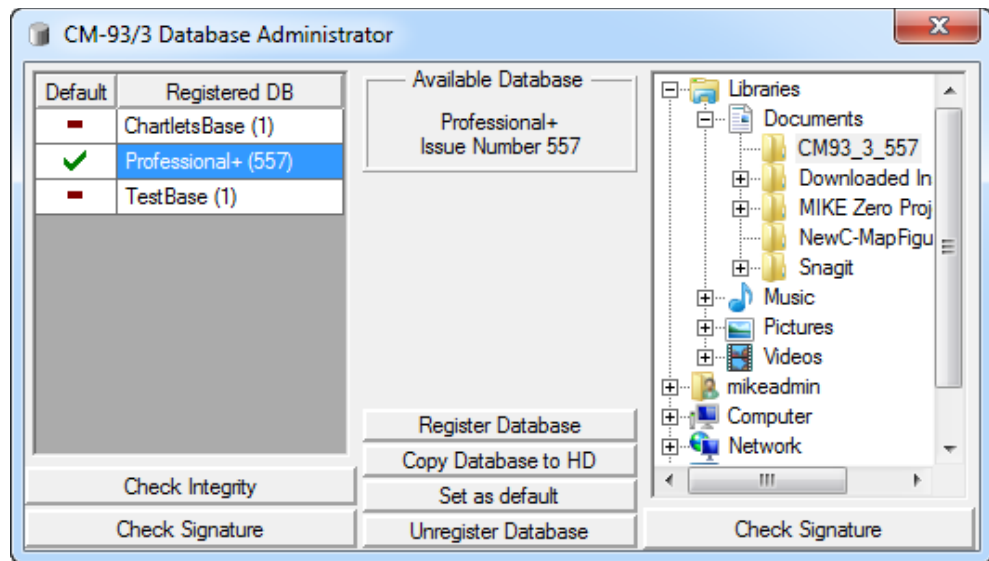
14. C-MAP chart database registration:



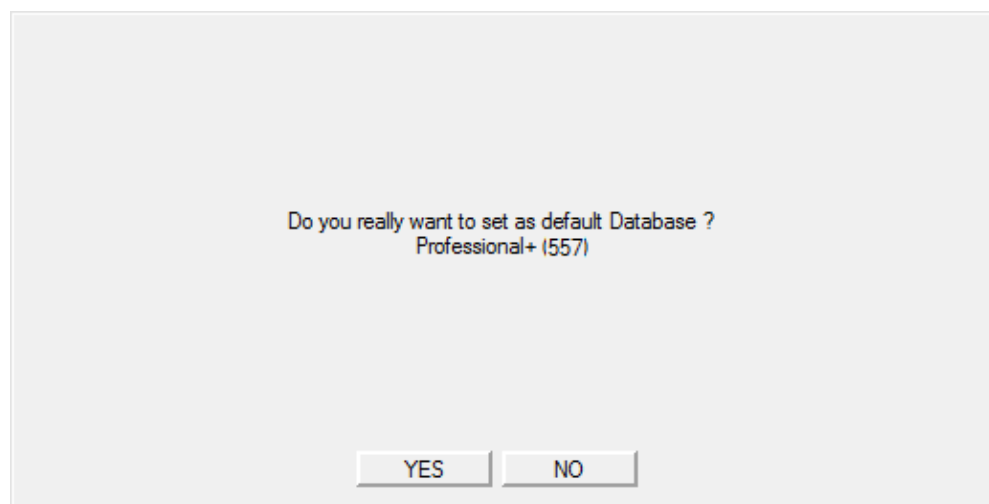
Click 'Yes'



Browse to the location where you have installed the C-MAP Professional+ database (here example from testing) or click 'Copy Database to HD' if not done in advance.



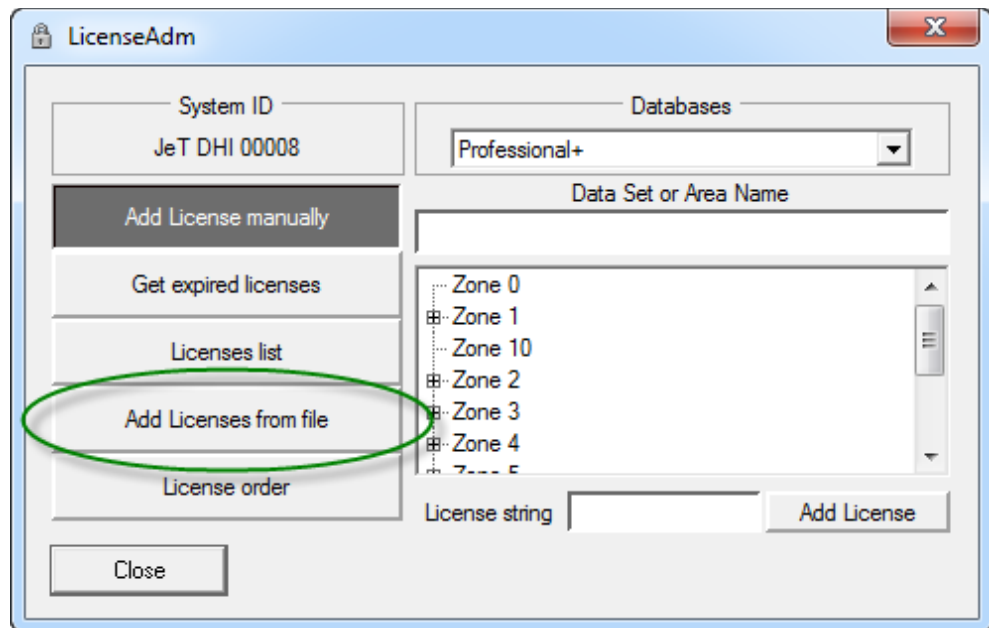
Register Database (the example here is the Professional+ Issue Number 557).



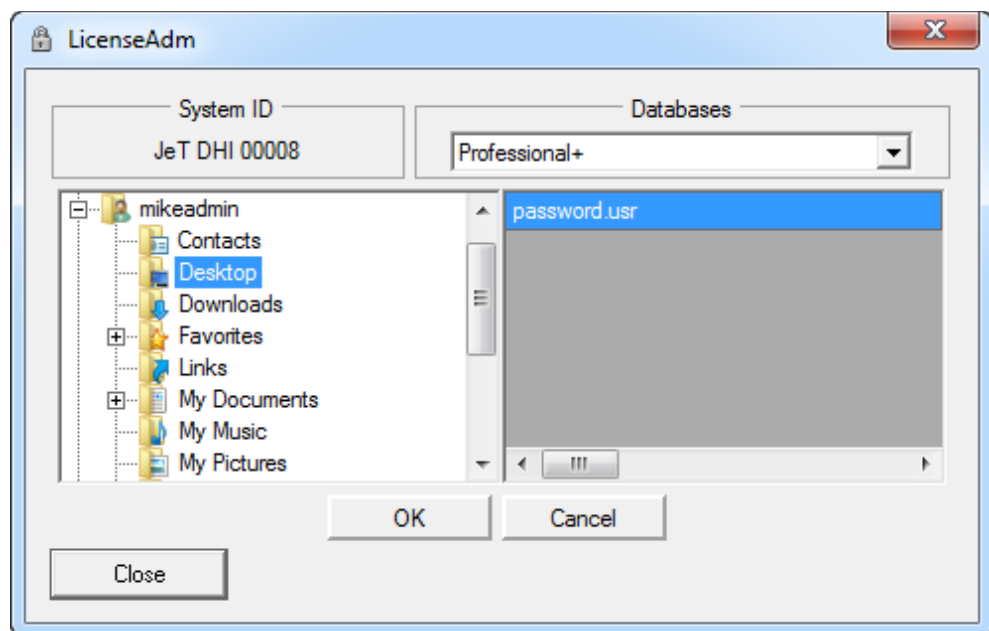
Click 'Yes' and close the dialogue box.

Click 'Finish' to close the MIKE C-MAP Installation wizard.

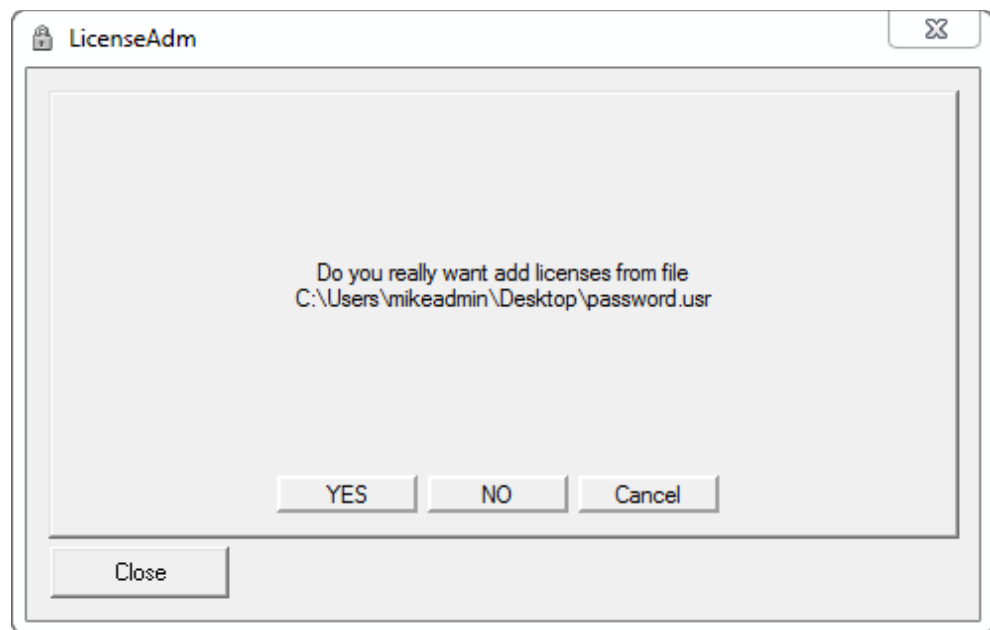
- Next, the C-MAP License must be activated: Open 'C-MAP LicenseADM' from the Start menu.



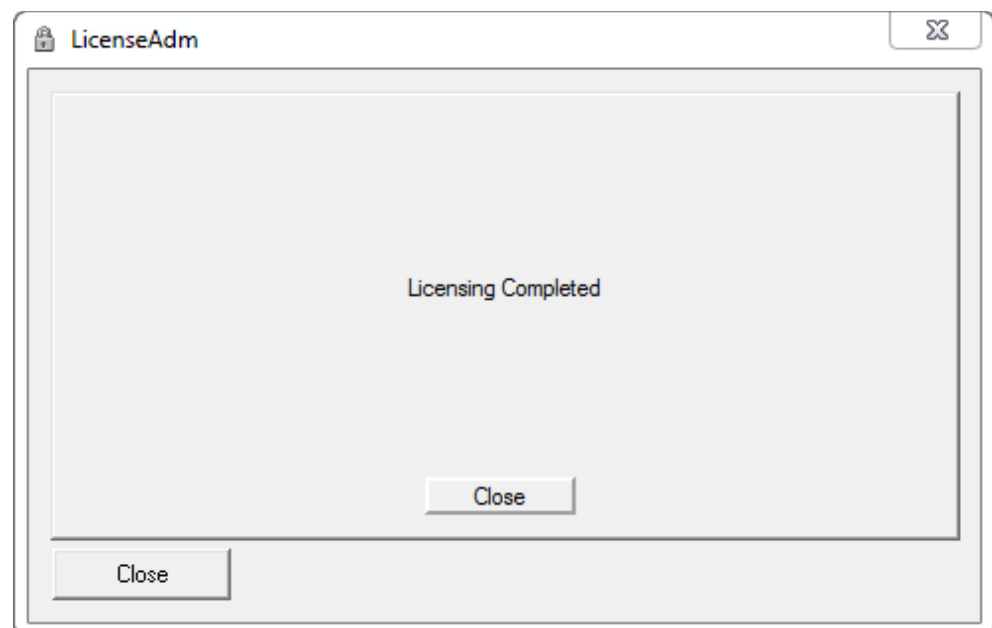
Click 'Add Licenses from file'



Browse to location of your C-MAP license file.



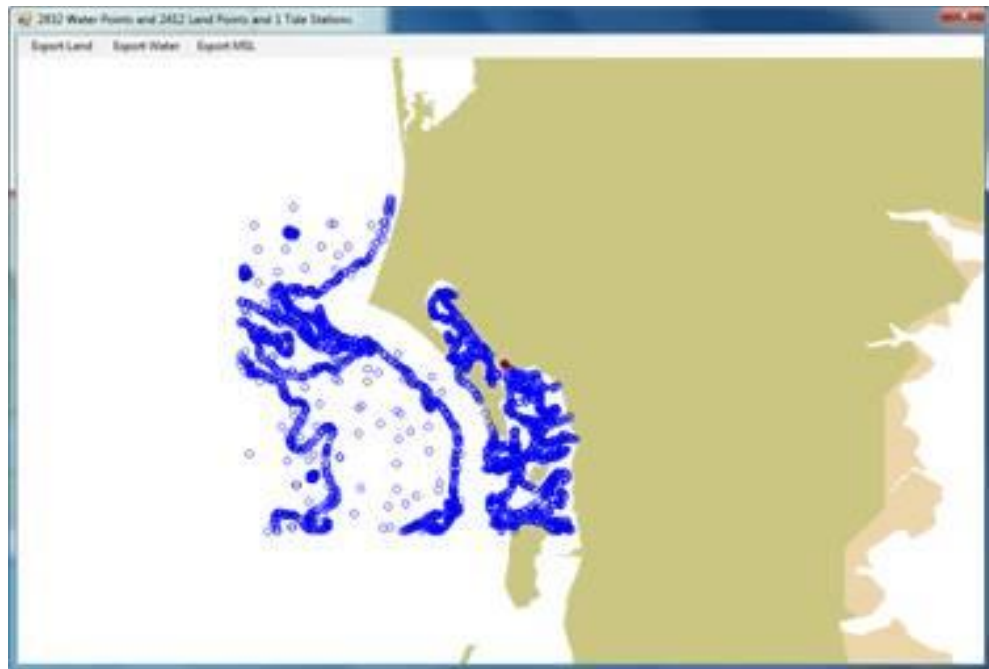
Click 'Yes'



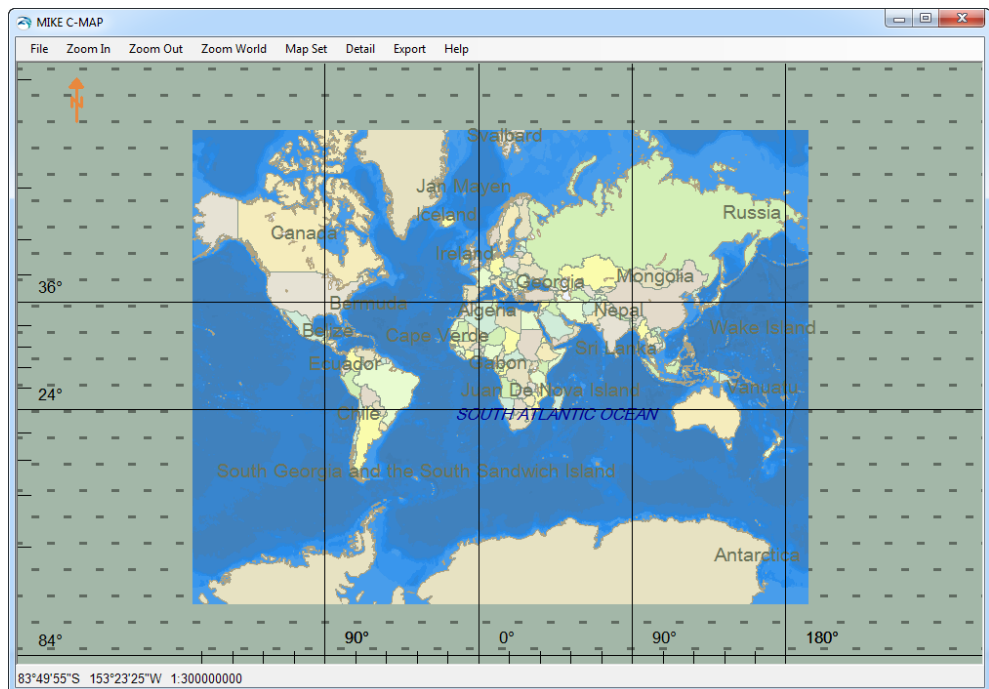
and click 'Close'

16. Before 'Start using MIKE C-MAP', please ensure that the DHI license is running (using the DHI License Administration). If not, please install the DHI License Manager (if not already done) and specify the local DHI license file.
17. When using MIKE C-MAP for the first time you have to calibrate the screen resolution for extracted data display, i.e. if not already done in Step 12.

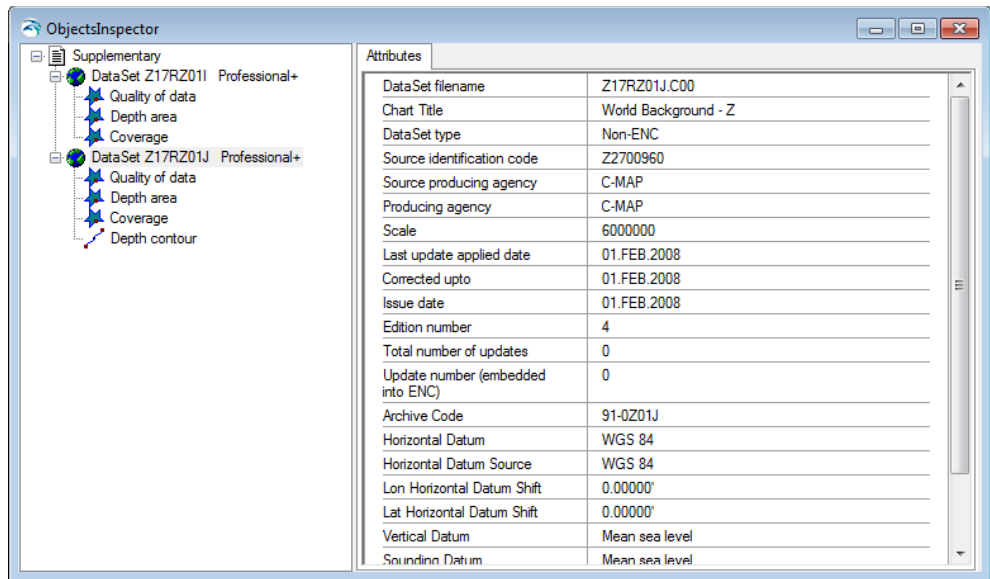
If you do not measure the rectangle or do it incorrectly, the extracted data (e.g. blue points) are displayed only in part of the window as shown in the example below.



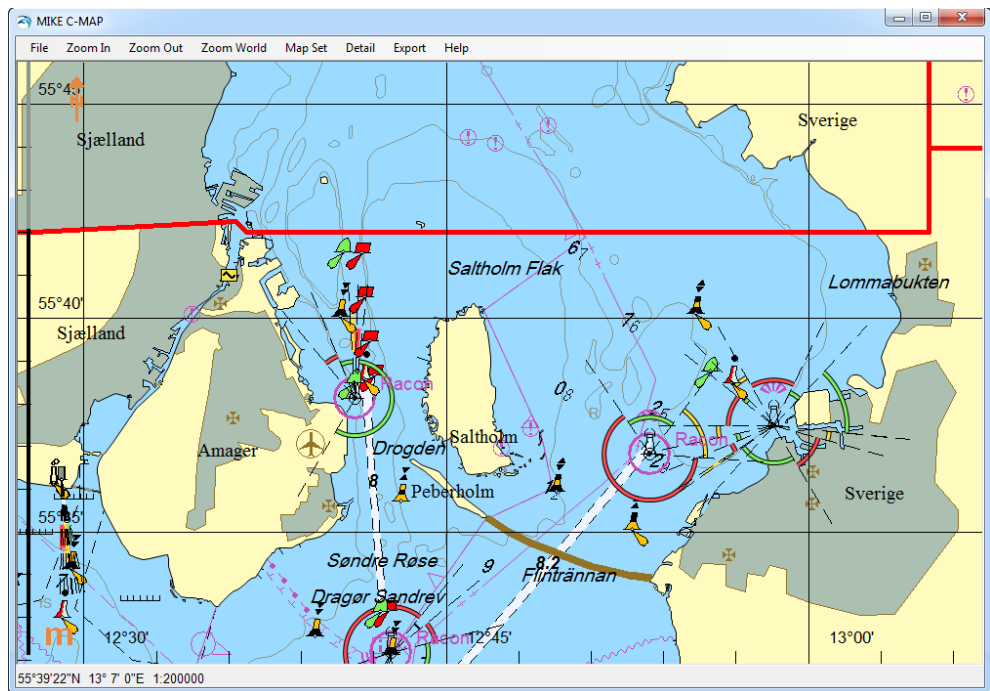
18. To open and use MIKE C-MAP, select 'MIKE C-MAP' from the Start menu.



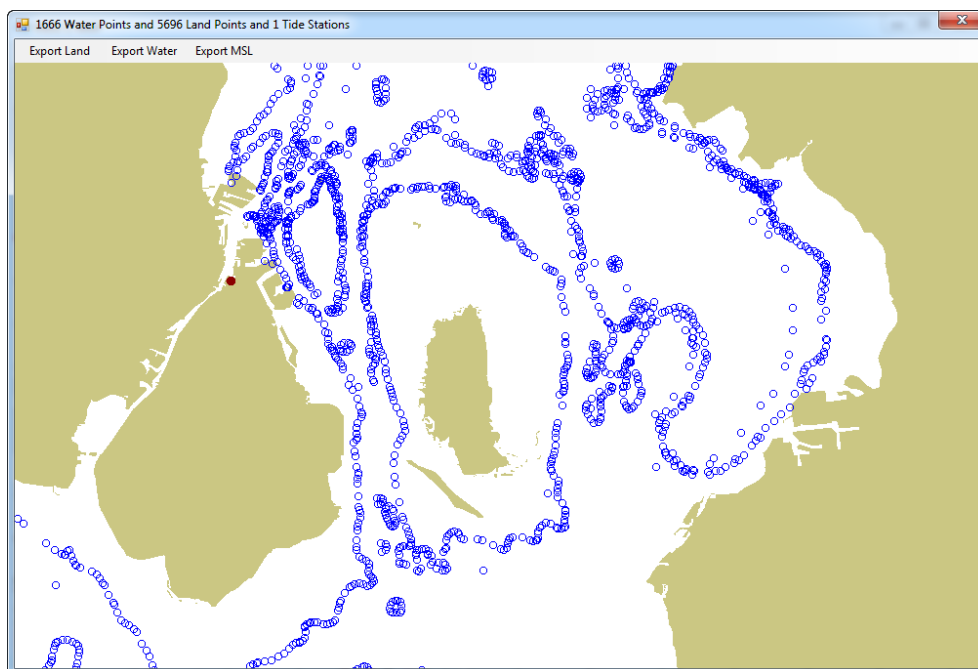
When you are in the chart view mode, you can right click the mouse on the map to show information about the displayed chart. An example is shown below.



19. Pan to the area of interest.

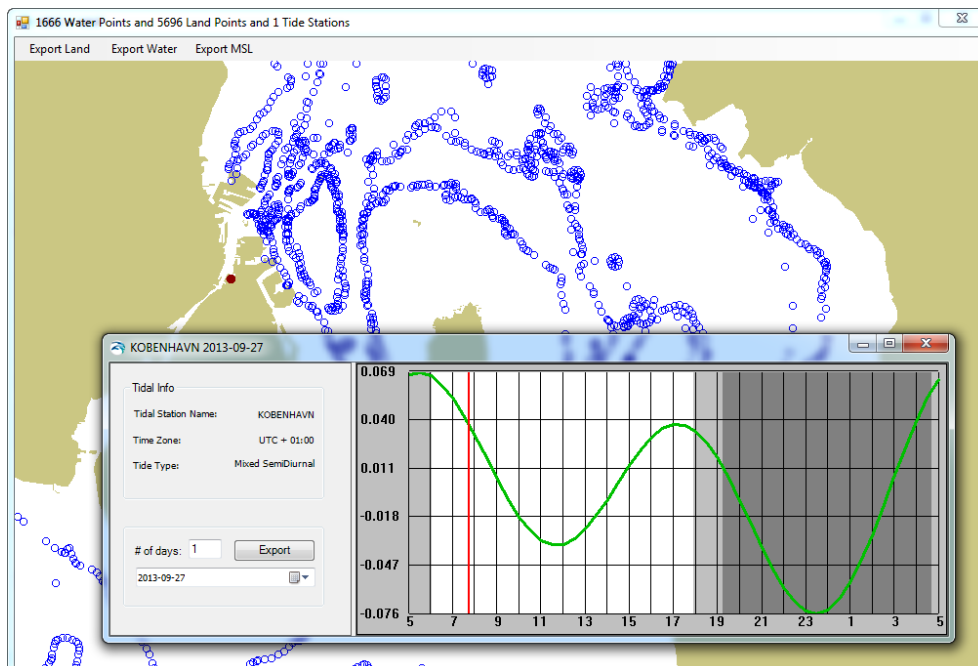


20. Select 'Export' in the top menu in the Chart View.



Select 'Export Land', 'Export Water' or 'Export MSL', respectively, to save the exported data to xyz-files.

21. A red dot in the display is a tidal station. When you click on the dot the predicted tidal elevation appears as shown in the example below.

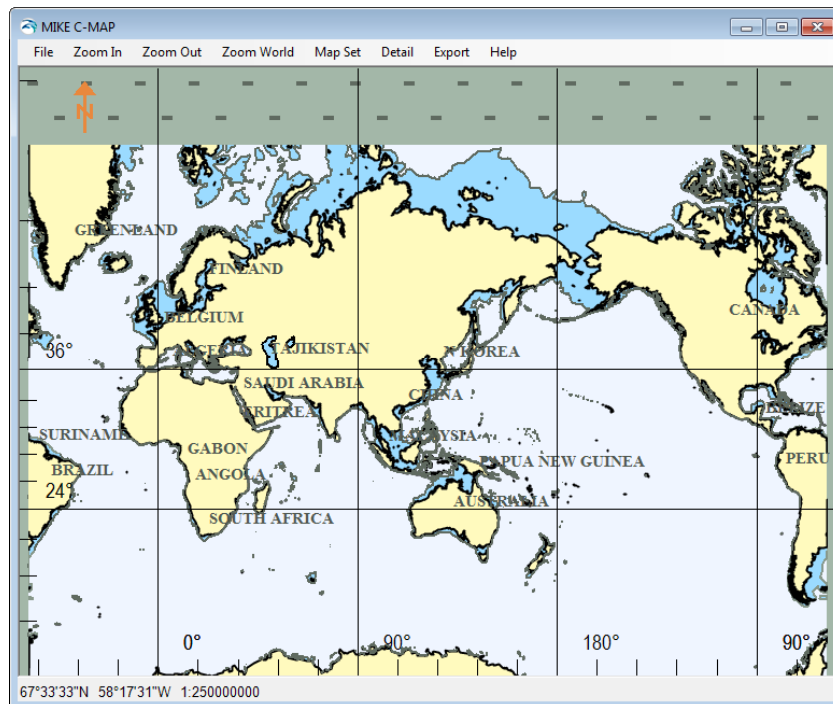


For more information about how to use MIKE C-MAP please refer to the User Guide.

2.1 Troubleshooting

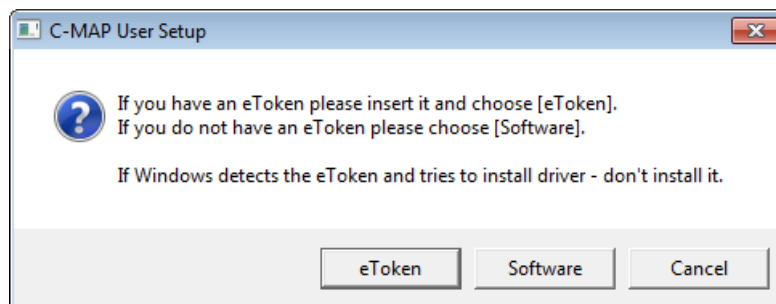
2.1.1 Maps not recognized

Sometimes the update of an existing C-Map installation can cause the maps not to be recognized. This will result in MIKE C-Map opening with a default World map with only land contours available.

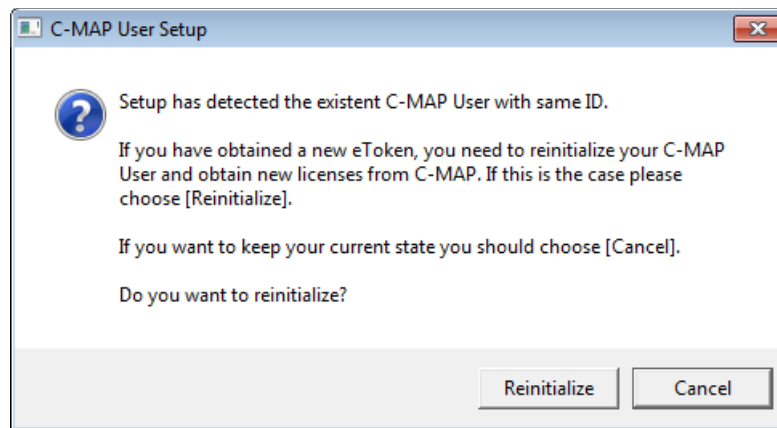


To fix this re-install C-MAP by using **C-MAP User Setup** from the **C-MAP Professional SDK Runtime** entry in the Start menu.

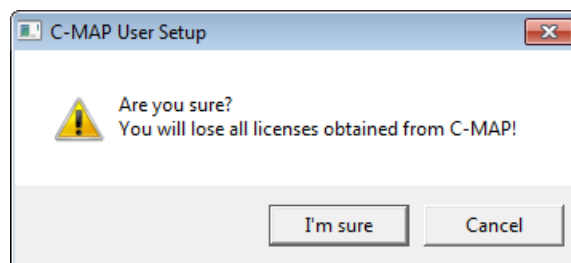
The following dialogs will appear:



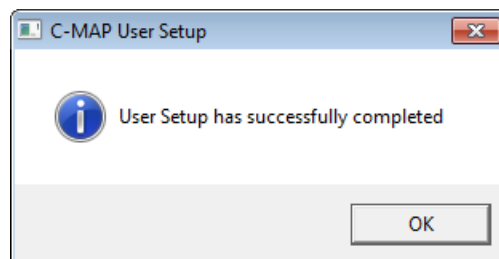
Select 'eToken'



Select 'Reinitialize'



Select 'I'm sure' (note that nothing is deleted)



Press OK.

You now have to reload the license file for the C-MAP database. You can do this in two ways:

1. Either via the **C-MAP Chart Manager** available from **C-MAP Professional SDK Runtime**
2. or via **C-MAP LicenseAdm** from the **MIKE C-MAP 2xxx** entry in the Start menu.

2.1.2 C-MAP dongle not activated

When you insert your C-MAP dongle into your PC you should NOT install any drivers when proposed by Windows. However, for some operating systems it may be that you will not be asked and Windows will try to install a driver anyway. This can in turn cause the C-MAP dongle to be de-activated (and hence the C-MAP license cannot be installed) If the C-MAP dongle cannot be activated it could be due to a restriction in the operating system: 64 bit versions of Windows 10 (and Windows 8) include a “driver specific enforcement” feature which, if enabled, cause the system to only load drivers that have been signed by Microsoft.

To allow the update of the dongle driver for C-MAP this windows feature need to be disabled during the installation.