

MIKE FLOOD Toolbox

User Guide





PLEASE NOTE

COPYRIGHT

This document refers to proprietary computer software which is protected by copyright. All rights are reserved. Copying or other reproduction of this manual or the related programs is prohibited without prior written consent of DHI. For details please refer to your 'DHI Software Licence Agreement'.

LIMITED LIABILITY

The liability of DHI is limited as specified in Section III of your 'DHI Software Licence Agreement':

'IN NO EVENT SHALL DHI OR ITS REPRESENTATIVES (AGENTS AND SUPPLIERS) BE LIABLE FOR ANY DAMAGES WHATSOEVER INCLUDING, WITHOUT LIMITATION, SPECIAL, INDIRECT, INCIDENTAL OR CONSEQUENTIAL DAMAGES OR DAMAGES FOR LOSS OF BUSINESS PROFITS OR SAVINGS, BUSINESS INTERRUPTION, LOSS OF BUSINESS INFORMATION OR OTHER PECUNIARY LOSS ARISING OUT OF THE USE OF OR THE INABILITY TO USE THIS DHI SOFTWARE PRODUCT, EVEN IF DHI HAS BEEN ADVISED OF THE POSSIBILITY OF SUCH DAMAGES. THIS LIMITATION SHALL APPLY TO CLAIMS OF PERSONAL INJURY TO THE EXTENT PERMITTED BY LAW. SOME COUNTRIES OR STATES DO NOT ALLOW THE EXCLUSION OR LIMITATION OF LIABILITY FOR CONSEQUENTIAL, SPECIAL, INDIRECT, INCIDENTAL DAMAGES AND, ACCORDINGLY, SOME PORTIONS OF THESE LIMITATIONS MAY NOT APPLY TO YOU. BY YOUR OPENING OF THIS SEALED PACKAGE OR INSTALLING OR USING THE SOFTWARE, YOU HAVE ACCEPTED THAT THE ABOVE LIMITATIONS OR THE MAXIMUM LEGALLY APPLICABLE SUBSET OF THESE LIMITATIONS APPLY TO YOUR PURCHASE OF THIS SOFTWARE.'





CONTENTS

Levee Breach Generation	7
1 Levee Breach Generation	9
1.1 Time Independent Parameters	9
1.2 Time Dependent Parameters	10
1.3 Output Specification	11
1.4 Overview	12
Index	13





LEVEE BREACH GENERATION



The Levee Breach Generation is a tool for the creation of time varying levees. By supplying a number of parameters defining the geometry of the levee breach a time varying line series is created which may be used as input to the MIKE FLOOD model.



1 Levee Breach Generation

The information provided in the present Dialog Overview is related, specifically, to the use of the MIKE FLOOD Tool for levee branch generation. The levee breach generation tool may be used to construct a temporal varying levee along a lateral link in MIKE FLOOD. The levee breach generator produces a line series file (dfs1) describing the levee breach geometry for a trapezoidal shaped breach. The levee is assumed to have the same levee height along the link prior to breach initiation. If a more complex geometry is required the dfs1 editor may be used to generate the levee breach file.

The instantaneous breach geometry is described through a number of parameters as detailed below.

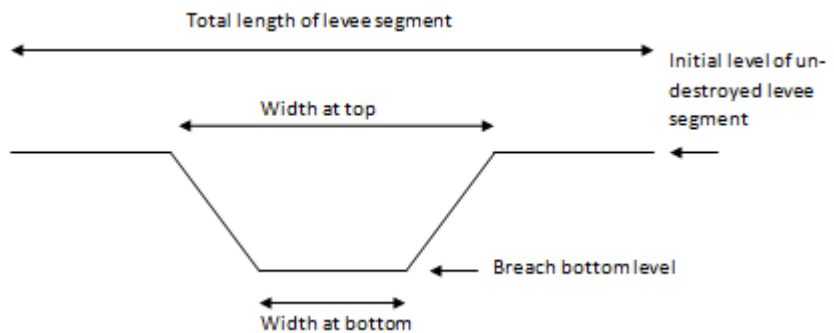


Figure 1.1 The geometry of the breach

The Levee Breach Generation tool is part of the Hydrodynamics tools of the MIKE FLOOD Toolbox. The tool is organised logically following the order of the dialog pages.

1.1 Time Independent Parameters

Two parameters are to be supplied on this page:

- The level of the undestroyed levee segment
- The total length of the segment

The breach will be placed symmetrically within the given segment.

Time Independent Parameters

Here you enter the time independent parameters.

Specify the total length of the levee

Specify the initial level of the undestroyed levee segment

< Back Next > Cancel Help

Figure 1.2 Definition of Time Independent Parameters

1.2 Time Dependent Parameters

On this page the temporal development of the levee breach is supplied.

Time dependent parameters

Here you enter the time dependent parameters.

Time before breach initiates (s)

No	Time after breach (s)	Width at top	Width at bottom	Breach bottom level
1	1800.0000	100.0000	50.0000	65.0000
2	3600.0000	200.0000	200.0000	60.0000
3	7200.0000	350.0000	200.0000	58.0000

< Back Next > Cancel Help

Figure 1.3 Definition of Time Dependent Parameters

The breach geometry is given at certain times relative to the time of the initiation of the breach. The relative time of the initial breach may be supplied as the “Time before breach initiates”. All time inputs are given in seconds.

The remaining parameters (all in meters) are:



- Width at top
- Width at bottom
- Breach bottom level

These parameters must be supplied in a tabular form as a function of the time. The latter specified in seconds. Please note that the time span of the file does not need to cover the full simulation period. Since MIKE FLOOD simply re-uses the final time step beyond the dfs1 files time span for the rest of the simulation period.

The tools above to the right of the table may be used for:

- inserting lines above or below current line
- deleting a line in the table
- reordering the lines in the table

1.3 Output Specification

The output file name and location must be specified along with the resolution to be used in the direction along the levee segment. Finally the time step may also be supplied. Though the latter is of less importance since MIKE FLOOD uses linear interpolation in time when needed.

A subdivision of the levee segment length in the same order as the grid/mesh is recommended.

Figure 1.4 Specification of the output dfs1 file



1.4 Overview

The overview page presents a summary of all the input parameters you have specified. You should inspect that the parameters are correct and if not go back and change them.

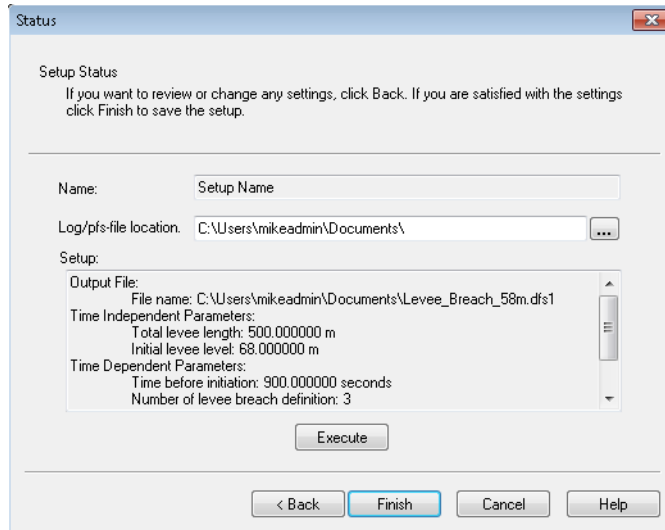


Figure 1.5 Reviewing your input parameters before executing the task and finishing

From the page you can either *Finish* the setup which will transfer your setup definition to the current tool box file or execute the setup.



INDEX

