

# MIKE 21 Flow Model FM

ECO Lab / Oil Spill Module

User Guide





## PLEASE NOTE

### **COPYRIGHT**

This document refers to proprietary computer software which is protected by copyright. All rights are reserved. Copying or other reproduction of this manual or the related programs is prohibited without prior written consent of DHI. For details please refer to your 'DHI Software Licence Agreement'.

### **LIMITED LIABILITY**

The liability of DHI is limited as specified in Section III of your 'DHI Software Licence Agreement':

'IN NO EVENT SHALL DHI OR ITS REPRESENTATIVES (AGENTS AND SUPPLIERS) BE LIABLE FOR ANY DAMAGES WHATSOEVER INCLUDING, WITHOUT LIMITATION, SPECIAL, INDIRECT, INCIDENTAL OR CONSEQUENTIAL DAMAGES OR DAMAGES FOR LOSS OF BUSINESS PROFITS OR SAVINGS, BUSINESS INTERRUPTION, LOSS OF BUSINESS INFORMATION OR OTHER PECUNIARY LOSS ARISING OUT OF THE USE OF OR THE INABILITY TO USE THIS DHI SOFTWARE PRODUCT, EVEN IF DHI HAS BEEN ADVISED OF THE POSSIBILITY OF SUCH DAMAGES. THIS LIMITATION SHALL APPLY TO CLAIMS OF PERSONAL INJURY TO THE EXTENT PERMITTED BY LAW. SOME COUNTRIES OR STATES DO NOT ALLOW THE EXCLUSION OR LIMITATION OF LIABILITY FOR CONSEQUENTIAL, SPECIAL, INDIRECT, INCIDENTAL DAMAGES AND, ACCORDINGLY, SOME PORTIONS OF THESE LIMITATIONS MAY NOT APPLY TO YOU. BY YOUR OPENING OF THIS SEALED PACKAGE OR INSTALLING OR USING THE SOFTWARE, YOU HAVE ACCEPTED THAT THE ABOVE LIMITATIONS OR THE MAXIMUM LEGALLY APPLICABLE SUBSET OF THESE LIMITATIONS APPLY TO YOUR PURCHASE OF THIS SOFTWARE.'





# CONTENTS

<b>1</b>	<b>About This Guide</b>	9
1.1	Purpose	9
1.2	Assumed User Background	9
1.3	General Editor Layout	9
1.3.1	Navigation tree	10
1.3.2	Editor window	10
1.3.3	Validation window	10
1.4	Online Help	10
<b>2</b>	<b>Introduction</b>	13
<b>3</b>	<b>Getting Started</b>	15
3.1	General	15
3.2	Project Analysis	17
3.3	Data Collection	19
3.4	New MIKE ECO Lab Template?	20
3.5	Hypothesis / Theory	22
3.6	Implementation of Theory in the MIKE ECO Lab Template	22
3.7	Set Up and Run Model	23
3.8	Calibration	23
3.9	Solution	25
<b>4</b>	<b>Examples</b>	27
<b>5</b>	<b>MIKE ECO LAB / OIL SPILL MODULE</b>	29
5.1	Model Definition	29
5.1.1	Template selection	29
5.1.2	MIKE ECO Lab Parameter set library	30
5.1.3	Integration method	31
5.1.4	Update frequency	33
5.2	Classes	34
5.2.1	General description	34
5.2.2	Class specification	34
5.3	State Variables	35
5.3.1	General description	35
5.3.2	Transport	35
5.3.3	Units	35
5.4	Solution Technique	36
5.4.1	Remarks and hints	36



5.5	Constants	37
5.5.1	General description	38
5.5.2	Built-in constants	38
5.5.3	Remarks and hints	38
5.6	Forcings	38
5.6.1	General description	39
5.6.2	Built-in forcings	39
5.6.3	Remarks and hints	40
5.7	Dispersion	40
5.7.1	Dispersion specification	40
5.7.2	Recommended values	41
5.8	Drift profile	42
5.8.1	General description	42
5.8.2	Class drift profile	42
5.9	Bed Roughness	44
5.9.1	General description	44
5.9.2	Bed roughness from hydrodynamic model	45
5.9.3	User specified bed roughness	45
5.10	Wind Forcing	45
5.10.1	User specified wind	46
5.11	Precipitation-Evaporation	46
5.11.1	Specification	47
5.11.2	Recommended values	47
5.12	Infiltration	48
5.13	Sources	49
5.13.1	Source specification	49
5.13.2	Remarks and hints	50
5.14	Particle Sources	50
5.14.1	Particle source specification	51
5.15	Initial Conditions	55
5.16	Boundary Conditions	55
5.16.1	Boundary specification	56
5.17	Hydrodynamic Conditions	57
5.18	Temperature	57
5.18.1	User specified temperature	58
5.19	Salinity	58
5.19.1	User specified salinity	58
5.20	Density	59
5.20.1	User specified density	59
5.21	Output	59
5.21.1	Geographic view	59
5.21.2	Output Specification	60
5.21.3	Output Items	64



<b>6 LIST OF REFERENCES</b> . . . . .	<b>71</b>
<b>Index</b> . . . . .	<b>73</b>







# 1 About This Guide

## 1.1 Purpose

The main purpose of this User Guide is to enable you to use, MIKE 21 Flow Model FM ECO Lab Module, for applications involving ecological modelling.

## 1.2 Assumed User Background

Although the MIKE ECO Lab Module has been designed carefully with emphasis on a logical and user-friendly interface, and although the User Guide and Online Help contains modelling procedures and reference material, common sense is always needed in any practical application.

In this case, "common sense" means a background in ecological modelling, which is sufficient for you to be able to check whether the results are reasonable or not. Proper use of this module requires knowledge about biological, and chemical processes in the water environment at a level of environmentally oriented engineers (civil engineer or chemical engineer) or model oriented biologists. A co-operation between engineers and biologists is recommended. It is assumed that you are familiar with the Hydrodynamic and Transport modules of MIKE 21 Flow Model FM. This Guide is not intended as a substitute for basic knowledge of the area in which you are working: environmental modelling of aquatic systems.

Advanced users might want to create their own MIKE ECO Lab templates. See the User Guide for MIKE ECO Lab available from the MIKE Zero General Documentation Index:

MIKE ECO Lab, User Guide

It is assumed that you are familiar with the basic elements of MIKE Zero: file types and file editors, the Plot Composer, the MIKE Zero Toolbox, the Data Viewer and the Mesh Generator. An introduction to these are available from the MIKE Zero General Documentation Index:

MIKE Zero Pre- and Postprocessing, Generic Editors and Viewers, User Guide

Plot Composer, User Guide

MIKE Zero Toolbox, User Guide

## 1.3 General Editor Layout

The MIKE Zero setup editor consists of three separate panes.



### 1.3.1 Navigation tree

To the left there is a navigation tree showing the structure of the model setup file, and it is used to navigate through the separate sections of the file. By selecting an item in this tree, the corresponding editor is shown in the central pane of the setup editor.

### 1.3.2 Editor window

The editor for the selected section is shown in the central pane. The content of this editor is specific for the selected section, and might contain several property pages.

For sections containing spatial data - e.g. sources, boundaries and output - a geographic view showing the location of the relevant items will be available. The current navigation mode is selected in the bottom of this view, it can be zoomed in, zoomed out or recentered. A context menu is available from which the user can select to show the bathymetry or the mesh, to show the optional GIS background layer and to show the legend. From this context menu it is also possible to navigate to the previous and next zoom extent and to zoom to full extent. If the context menu is opened on an item - e.g. a source - it is also possible to jump to this items editor.

Further options may be available in the context menu depending on the section being edited.

### 1.3.3 Validation window

The bottom pane of the editor shows possible validation errors, and it is dynamically updated to reflect the current status of the setup specifications.

By double-clicking on an error in this window, the editor in which this error occurs will be selected.

## 1.4 Online Help

The Online Help can be activated in several ways, depending on the user's requirement:

- **F1-key seeking help on a specific activated dialog:**

To access the help associated with a specific dialog page, press the F1-key on the keyboard after opening the editor and activating the specific property page.
- **Open the Online Help system for browsing manually after a specific help page:**



Open the Online Help system by selecting “Help Topics” in the main menu bar.





## 2 Introduction

MIKE ECO Lab is a numerical lab for ecological modelling. It is an open and generic tool for customizing aquatic ecosystem models to describe water quality, eutrophication, heavy metals and ecology. The module is mostly used for modelling water quality as part of an Environmental Impact Assessment (EIA) of different human activities. The tool is also applied in aquaculture for e.g optimization the production of fish, seagrasses and mussels. Another use is in online forecasts of water quality, see e.g.

<http://www.waterforecast.com>

The need for tailormade ecosystem descriptions is large, because ecosystems vary. The strength of this tool is the easy modification and implementation of mathematical descriptions of ecosystems into the hydrodynamic models included in DHI Software.

The user can use predefined DHI supported MIKE ECO Lab templates, or can choose to develop his own model concepts. The module can describe dissolved substances, particular matter of dead or living material, living biological organisms and other components (all referred to as state variables in this context).

The module is developed to describe chemical, biological and ecological processes together with interactions between state variables and also the physical process of sedimentation of components can be described. State variables included in MIKE ECO Lab can either be transported by advection-dispersion processes based on hydrodynamics, or have a more fixed nature (e.g. rooted vegetation).





## 3 Getting Started

### 3.1 General

The hydrodynamic basis for the MIKE ECO Lab Module must be calculated using the Hydrodynamic Module of the MIKE 21 Flow Model FM modelling system.

If you are not familiar with setting up a hydrodynamic model you should refer to User Guide for the Hydrodynamic Module and the comprehensive step-by-step training guide covering the Hydrodynamic Module of MIKE 21 Flow Model FM. The user guide and the training guide (PDF-format) can be accessed from the MIKE 21 Documentation index:

MIKE 21 Flow Model, Hydrodynamic Module, User Guide

MIKE 21 & MIKE 3 Flow Model FM, Hydrodynamic Module, Step-by-Step Training Guide

A comprehensive training guide covering the MIKE ECO Lab Module of the MIKE 3 Flow Model FM modelling system is also provided with the DHI Software installation. The objective of this training guide is to show how to set up an advanced MIKE ECO Lab model. The training guide (PDF-format) can be accessed from the MIKE 3 Documentation index:

MIKE 3 Flow Model FM ECO Lab Module, Step-by-Step Training Guide

The purpose of this chapter is to give you a general check list, which you can use when working with environmental projects using the MIKE ECO Lab Module in MIKE 21 Flow Model FM.

The work will normally consist of the tasks shown in the diagram in Figure 3.1.

As the diagram illustrates there can be different ways to reach the solution of your project.

Some tasks are mandatory, such as:

- Project analysis: defining and limiting the MIKE ECO Lab model
- Data collection
- Set up and run the model
- Calibration
- Solution: Running the production simulations
- Solution: Presenting the results



Other tasks in your project are optional and depend on your choice: do you plan to create your own MIKE ECO Lab template or just use a predefined one? In some cases a predefined template covering your specific problem does not exist, and then a new MIKE ECO Lab template has to be developed. If you choose to develop your own MIKE ECO Lab template, your project will include the following additional tasks:

- Development of Hypothesis/Theory: Litterature study and formulation of equations
- Implementation of theory into a MIKE ECO Lab template using the MIKE ECO Lab editor



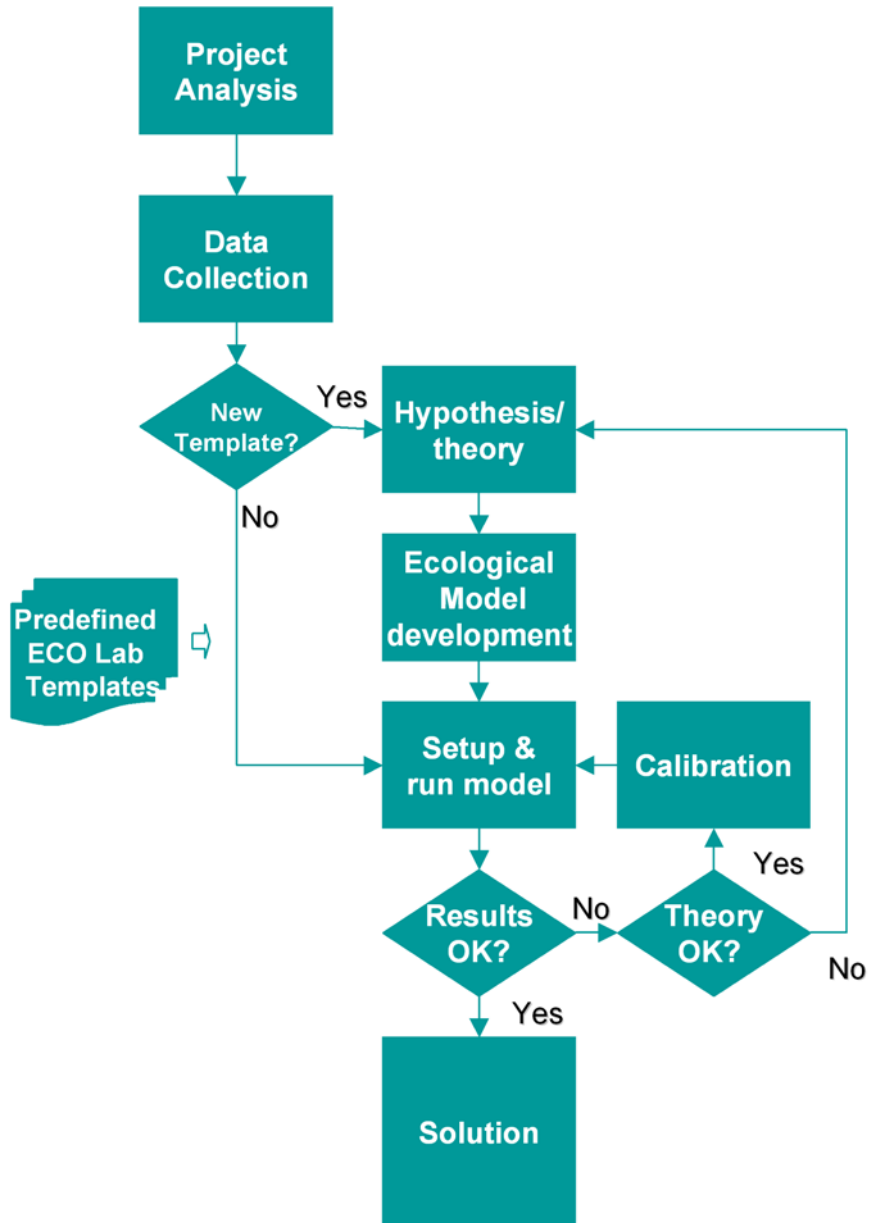


Figure 3.1 Working with MIKE ECO Lab

You can see a list of available predefined MIKE ECO Lab templates in the MIKE Zero General Documentation Index.

### 3.2 Project Analysis

This task involves analysis and evaluation of the ecosystem problem and solution strategy. The considerations should be about:

1. What ecosystem state variables to simulate and the possible causal relations for their state. Describe which questions the model should be able to answer.
2. If it is possible at all to describe the ecosystem state variables with the available ecosystem knowledge, and if it possible to get sufficient data to simulate the state variables.



Figure 3.2 Illustration of the project analysis phase: Defining the problem and its causes and finding a solution strategy

The first thing to do is to point out the ecosystem variables that should be described with a MIKE ECO Lab model. In environmental projects these are often the variables that are considered as either dangerous, or vulnerable in the ecosystem. Also it is often seen that MIKE ECO Lab models should describe variables that are described in the criteria of environmental legislation. In aqua culture the state variables are usually those that affect the production.

The next thing to do is to point out the possible causal relations for the state of the system. The objective for most MIKE ECO Lab models is to be able to quantify these causal relations and their effect on the ecosystem. The best models tell us something that we do not already know even though we know the possible causal relation of a problem. For instance if an area has oxygen depletion, and experts agree that it is caused by eutrophication. Often they can not agree who is to blame for the anoxia. Are the nutrients imported from other areas and countries across the boundaries or are they coming from local effluents? A MIKE ECO Lab model describing eutrophication of the area would be able to give us such answers.

A MIKE ECO Lab model that describe the relation between cause and problem is also ideal for making prognostic scenarios. What happens to the oxygen concentrations in an area if we reduce the local nutrient loadings? A MIKE ECO Lab model describing eutrophication of the area would also be able to give us that answer.

Finally, the project analysis should involve development of a conceptual diagram of the ecosystem in question. It should be discussed if it is possible to



get adequate data and if enough ecosystem knowledge about the ecosystem exists to describe it.

### 3.3 Data Collection

This task involves the collection of data, field measurements and laboratory analysis and it may take a long time if you have to initiate a monitoring program. Alternatively it may be carried out very quickly if you are able to use existing data which are immediately available.



Figure 3.3 The phase of collecting data, e.g. field measurements and laboratory analysis

In all cases the following data should be collected:

- Bathymetric data such as charts from local surveys or, for example, from the Hydrographic Office, UK, MIKE C-MAP, etc.
- Hydrodynamic boundary data: Salinity, temperature, water levels and /or current velocities, which might be measurements or taken as model output from larger regional models
- Hydrodynamic forcings, for example wind, air temperature and clearness coefficient
- Hydrodynamic sources: Discharges from rivers and point sources
- MIKE ECO Lab boundary data: concentrations at the boundary of the advective state variables in the MIKE ECO Lab template, which might be measurements or taken as model output from larger regional models. Note that the frequency of measurements at the boundary can be very critical for the accuracy of the model
- MIKE ECO Lab forcings (depends on the content of the MIKE ECO Lab template), for example solar radiation



- MIKE ECO Lab loadings: Concentrations in sources and precipitation of the advective state variables in the MIKE ECO Lab template. The quality of these data is often very critical for the accuracy of the MIKE ECO Lab model. Make sure you have all the point sources and a proper assessment of the diffuse loading. Some times the loadings themselves are model output from e.g. MOUSE or MIKE 11. There are also DHI tools for estimating diffuse loadings that you might consider to use, if diffuse urban loadings are important in your MIKE ECO Lab study.
- MIKE ECO Lab initial conditions of MIKE ECO Lab state variables. If the retention time in the system is high, the initial conditions are quite important, and should be measured. If the retention time is low the initial conditions are not so important for the advective state variables, because the system quite fast will “flush” the system anyway, and the concentrations will be in balance after a short “warmup” period. Also the ‘not-moveable’ state variable (fixed) are often quite important to measure. Could for example be maps of benthic vegetation, benthic fauna etc.
- Calibration data; these might be measurements from different monitoring stations. They are used for comparing simulated values with measured values. So these data are important for documenting the capability and quality of the model.

### 3.4 New MIKE ECO Lab Template?

Is any predefined MIKE ECO Lab Template sufficient, or does the ecosystem that you want to describe require a dedicated MIKE ECO Lab template?

DHI has a number of predefined MIKE ECO Lab templates.

- Eutrophication MIKE ECO Lab templates

These are predefined DHI supported MIKE ECO Lab templates that include models of eutrophication processes in aquatic systems.

*Eutrophication 1* is the classic DHI Eutrophication model. Eutrophication 1 can be used with an extended description of sediment and benthic vegetation. *Eutrophication 2* is a template that includes features such as diurnal DO variations.

You have access to the scientific description of the different eutrophication templates from the MIKE Zero General Documentation index. It is also possible to view the pdf file directly from the MIKE ECO Lab template editor when the EU template is loaded.

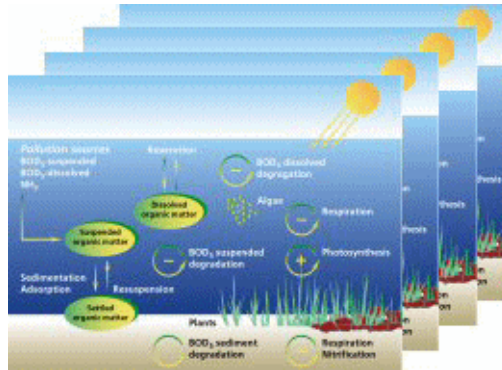


Figure 3.4 DHI has a number of predefined MIKE ECO Lab templates describing different types of ecosystems

- Heavy Metal MIKE ECO Lab template

This is a predefined DHI supported MIKE ECO Lab template including a model for estimating the spreading of heavy metals in aquatic systems.

You have access to the scientific description from the MIKE Zero General Documentation index. It is also possible to view the pdf file directly from the MIKE ECO Lab template editor when the ME template is loaded.

- Water Quality MIKE ECO Lab templates

These are predefined DHI supported MIKE ECO Lab templates that include a series of simple water quality models.

State variables that are modelled with the WQ templates are:

- BOD
- DO
- Nitrate
- Nitrite
- Phosphate
- Faecal Coliform
- Total Coliform

You have access to the scientific description of the different water quality templates from the MIKE Zero General Documentation index. It is also possible to view the pdf file directly from the MIKE ECO Lab template editor when the WQ template is loaded.

## 3.5 Hypothesis / Theory

If none of the existing predefined MIKE ECO Lab templates cover your problem, you should formulate your own theories for your own template.

Describe in mathematical terms the processes that affect the state variables and how the state variables interact with each other.

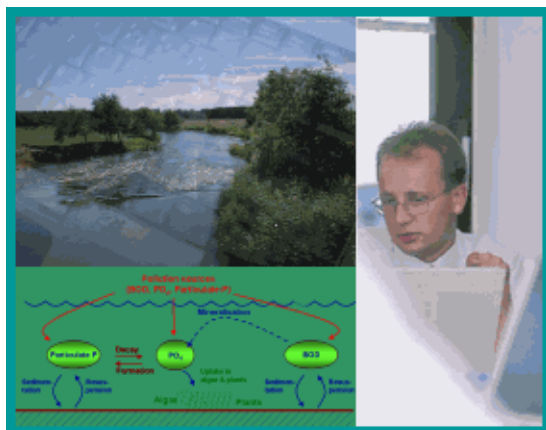


Figure 3.5 The mathematical formulation of theory for a new MIKE ECO Lab template usually requires a literature study

Ecosystem knowledge is usually collected by searching in literature. It is also a good idea to join a user group where you can take advantage of other MIKE ECO Lab users experiences, see for example <http://www.geo.uu.nl/~rtm/index.php?page=eurg>.

## 3.6 Implementation of Theory in the MIKE ECO Lab Template

When you have formulated your mathematical description of an ecosystem, you should implement it in a new MIKE ECO Lab template. You create a new template with the MIKE ECO Lab editor and enter your expressions with the editor.

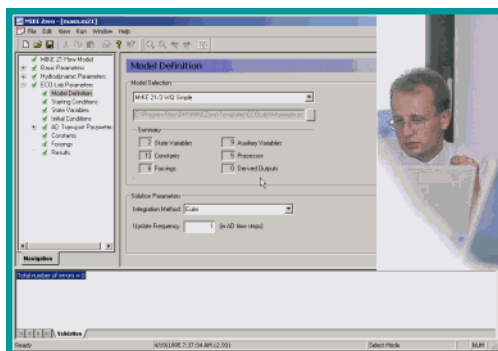


Figure 3.6 Implementation of ecosystem theory into a MIKE ECO Lab template is easy with the MIKE ECO Lab editor

See the User Guide for MIKE ECO Lab available from the MIKE Zero General Documentation index.

### 3.7 Set Up and Run Model

Whether you created your own template or you picked one of the existing templates, you are now ready to set up the MIKE ECO Lab model in MIKE 21 Flow Model FM.

Please see the step-by-step training guide for MIKE FM ECO Lab for learning how to set up an advanced MIKE ECO Lab model. This can be accessed from the MIKE 3 Documentation Index:

MIKE 3 Flow Model FM ECO Lab Module, Step-by-Step Training Guide

If you are not familiar with setting up a hydrodynamic model you should refer to the Step-by-step training guide for the Hydrodynamic Module:

MIKE 21 & MIKE 3 Flow Model FM, Hydrodynamic Module, Step-by-Step Training Guide

### 3.8 Calibration

By calibration of a MIKE ECO Lab set-up in any of the hydrodynamic models included in DHI software it is attempted to find the best accordance between computed and observed state variables (model components) by variation of a number of parameters.

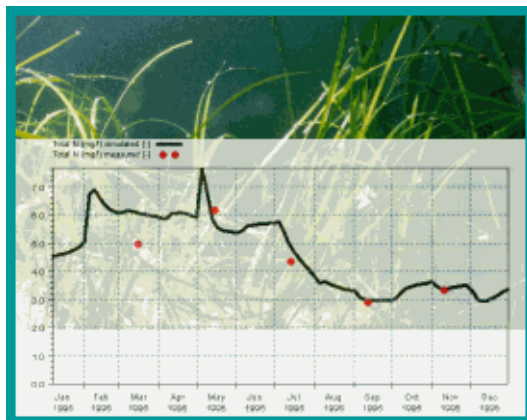


Figure 3.7 Calibration phase: adjusting the model so that the model output fits the measurements

Deviation between computed and observed state variables in MIKE ECO Lab can be caused by a number of reasons. The most obvious are:

1. Inaccurate specification of concentrations at the model boundaries
2. Inaccurate specification of loadings to the ecosystem
3. Inaccurate initial concentrations
4. Inaccurate hydrodynamic set-up
5. Limitations in the chosen MIKE ECO Lab process descriptions
6. Inaccurate calibration of coefficients in MIKE ECO Lab process equations
7. Wrong measurements
8. Unstable numerical solution

The MIKE ECO Lab modeller should when calibrating a MIKE ECO Lab set-up have the above-mentioned possible reasons for inaccuracy in mind, before changing relevant parameters dramatically.

Calibrating coupled ordinary differential equations can be tricky, because of the mutual dependency of the state variables. So if one state variable is calibrated to fit the observed values, maybe it will not fit so well after calibrating other state variables in the ecosystem. Some dependencies are stronger than others. Therefore it is advisable to calibrate the state variables with the least dependencies to other state variables first.

If the output deviates from the measurements in a way that can not be accepted the user has to identify if the problem is caused by a wrong ecosystem theory, or if the reason is caused by another of the reasons mentioned above. Whether the template has to be changed or not, this calibration task will continue until the model describes the ecosystem in a causal way.





## 3.9 Solution

When the calibration is satisfying, the last task remains: Running the production simulations.

Now it is time to use the model and get answers from the model. Usually this task will include simulation covering different scenarios.

MIKE Zero includes a number of advanced plotting facilities, that are useful in this phase, when presenting your results. See the facilities in Plot Composer and MIKE Animator Plus.





## 4 Examples

Please see the step-by-step training guide for MIKE 3 Flow Model FM ECO Lab Module, for learning how to set up an advanced MIKE ECO Lab model using MIKE 3 Flow Model FM ECO Lab Module. The guide is available from the MIKE 3 Documentation index:

MIKE 3 Flow Model FM ECO Lab Module,  
Step-by-step training guide

Further examples focusing on ABM modelling can be also be accessed from the Documentation Index:

MIKE 3 Flow Model FM, ABM Lab - Drifter Example,  
Step-by-step training guide





## 5 MIKE ECO LAB / OIL SPILL MODULE

MIKE ECO Lab is a numerical lab for ecological modelling. It is an open and generic tool for customizing aquatic ecosystem models to describe water quality, eutrophication, heavy metals and ecology using process oriented formulations.

Besides the pure process orientated description MIKE ECO Lab also supports the characterisation of individual spatial entities (or particles) with associated attributes, processes and description of their movement. Such entities can represent different individuals like fish or particles like oil parcels.

### 5.1 Model Definition

In this dialog you specify a MIKE ECO Lab template, representing the actual model formulation and the solution parameters: Integrated Method and Update Frequency.

#### 5.1.1 Template selection

A MIKE ECO Lab template contains mathematical equations describing an aquatic ecosystem. The user has two options:

- Using one of the DHI supported predefined MIKE ECO Lab templates or the DHI supported predefined oil spill template
- Using another MIKE ECO Lab template. Choose 'From file...'

Having selected the template a brief summary of the contents is shown in the dialog.



Please note that every time a new template is selected, the specifications of all the remaining MIKE 21 ECO Lab / Oil Spill dialogs are reset to default values. Especially the user parameterisation of constants and forcing is reset to the default values stored in the template. However, the MIKE ECO Lab Parameter set library provides an easy mechanism to store and retrieve a complete parameterisation and makes reloading/updating of a template simple.

#### Predefined MIKE ECO Lab templates

The installation contains a number of standard MIKE ECO Lab templates. They can be used for a variety of process oriented investigations as well as investigations concerning the behaviour of individual entities.

You can find a description of the available templates in the MIKE Zero Documentation Index that can be accessed from the start menu.



### Load Parameter set

You can load a set of previous specified parameters, i.e. populate the MIKE ECO Lab constants and forcing settings with previous specified values. You can also invoke the MIKE ECO Lab Parameter set library by pressing the library button. After applying a parameter set a short summary will be shown, listing the successful matched parameters and occurred errors/warnings. Please note that the matching algorithm operates on the MIKE ECO Lab symbol names and element types, i.e. it is possible that a collection and the setup contain different numbers of specified parameters or may be based on different MIKE ECO Lab templates (versions). If parameters refer to data files the user must pay attention to make these data files available.

## 5.1.2 MIKE ECO Lab Parameter set library

The MIKE ECO Lab parameter set library can be used to maintain different parameterisations, i.e. value settings for the MIKE ECO Lab constants and forcing. A single parameterisation, i.e. the specific value settings for all the (Eulerian and ABM) MIKE ECO Lab constants and forcing is called a parameter set. Such sets can be stored (and retrieved) from individual files, so called parameter set collections. The parameter set library consist of at least one or more such collections.

The default collection is the startup collection and represents the parameterisation of the initially loaded setup. It is neither possible to add nor to remove this default collection or to add/delete sets to it. The main purpose of the startup collection is be able to revert to the initial states stored in the setup (it does not necessarily reflect the defaults/initial value settings of the template). To add a new, user defined collection use the "new" button and specify the storage location and file name in the following dialogue. Please note that existing files will be overwritten without further notice! The "load" button can be used to open an existing parameter collection file, i.e. make all stored settings available in the load parameter list (see Template selection). The "unload" button will remove the access to selected collection and all its sets but will not delete the collection file.

To add the current active value specifications of the MIKE ECO Lab setup, i.e. the constants and forcing specification, to a collection, select the collection and press the "add" button. This will append the collection and add a new parameter set. You can specify a name and a short description text for both the collection and for each stored parameter set that will be used to identify a specific set. To update an existing parameter set with the current value settings, select the set and use the "update" button. This will overwrite the stored specifications with the current values from the setup.

To leave the parameter set library use the "close" or "save and close" buttons. The later will write any new/updated set (marked with a "\*" in front of their name) to the specified collection files.



### 5.1.3 Integration method

The specification of the solution parameters includes selection of the integration method for the coupled ordinary differential equations defined in the .ecolab file. At present the following three methods are available:

- Euler integration method
- Runge Kutta 4th order
- Runge Kutta 5th order with quality check

#### Euler integration method

A very simple numerical solution method for solving ordinary differential equations.

The formula for the Euler method is:

$$y_{n+1} = y_n + h \cdot f(x_n, y_n) \quad (5.1)$$

which advances a solution  $y$  from  $x_n$  to  $x_{n+1} = x_n + h$

#### Runge Kutta 4th order

A classical numerical solution method for solving ordinary differential equations. It has usually higher accuracy than the Euler method, but requires longer simulation times. The fourth order Runge-Kutta method requires four evaluations of the right hand side per time step.

$$y_{n+1} = \text{rk4}(y_n, f(x_n, y_n), x_n, h) \quad (5.2)$$



The function is solved this way:

$$k_1 = h \cdot f(x_n, y_n) \quad (5.3)$$

$$k_2 = h \cdot f\left(x_n + \frac{h}{2}, y_n + \frac{k_1}{2}\right)$$

$$k_3 = h \cdot f\left(x_n + \frac{h}{2}, y_n + \frac{k_2}{2}\right)$$

$$k_4 = h \cdot f(x_n + h, y_n + k_3)$$

$$y_{n+1} = y_n + \frac{k_1}{6} + \frac{k_2}{3} + \frac{k_3}{3} + \frac{k_4}{6} - O(h^5)$$

which advances a solution  $y$  from  $x_n$  to  $x_{n+1} = x_n + h$

### Runge Kutta 5th order with quality check

A numerical solution method for solving ordinary differential equations. The accuracy is evaluated and the time step is adjusted if results are not accurate enough.

$$y_{n+1} = f(y_n, f(y_n, x_n), x_n, h, \varepsilon, \text{yscale}) \quad (5.4)$$

The function is solved this way:

First take two half steps:

$$h_2 = 0.5 \cdot h \quad (5.5)$$

$$x_{n+\frac{1}{2}} = x_n + h_2 \quad (5.6)$$

$$y_2 = \text{rk4}(y_n, f(y_n, x_n), x_n, h_2) \quad (5.7)$$

$$y_2 = \text{rk4}(y_2, f(y_2, x_{n+\frac{1}{2}}), x_{n+\frac{1}{2}}, h_2) \quad (5.8)$$

Compare with one full time step:

$$y_1 = \text{rk4}(y_n, f(y_n, x_n), x_n, h) \quad (5.9)$$





Then estimate error:

$$y_1 = y_2 - y_1 \quad (5.10)$$

$$\text{err} = \text{MAX}(\text{ABS}(y_1/\text{yscale}))/\varepsilon \quad (5.11)$$

If the error is small ( $\text{err} \leq 1.0$ ) the function returns

$$y_{n+1} = y_2 + \frac{y_1}{15} \quad (5.12)$$

which advances a solution  $y$  from  $x_n$  to  $x_{n+1} = x_n + h$

or else the time step is reduced and the function tries again.

#### 5.1.4 Update frequency

The time step for the update of the MIKE ECO Lab equations is the overall time step (specified on the Time dialog) multiplied by the Update Frequency.

Selecting the time step of the MIKE ECO Lab model, and hereby the Update Frequency, has to be based on considerations of the time scales of the processes involved. Please notice that this selection can be rather decisive for the precision of the numerical solution as well as for the **CPU time** of the simulation. A large Update Frequency will decrease the precision as well as the CPU time. It is therefore advisable to perform a sensitivity analysis on the Update Frequency before making the final selection.

The purpose of not updating the MIKE ECO Lab every time step is to reduce simulation time.

#### Factors influencing the CPU time

The CPU time required by a hydrodynamic and MIKE ECO Lab simulation depends on the size of your model, on the number of time steps in your simulation, on the complexity of the used MIKE ECO Lab template, on the chosen numerical solution method and on the general computational speed of your computer.

If you wish to estimate how changes in your MIKE ECO Lab set-up changes the CPU time required, the following guidelines can be used:

- the CPU time varies linearly with the number of water points (or computational points) in the model.
- the CPU time also varies linearly with the number of time steps.
- the CPU time increases approximately linearly with the number of advective state variables.



Be aware that the following also influence CPU time:

- the choice of MIKE ECO Lab integration method
- the number and complexity of the mathematical expressions in the MIKE ECO Lab template
- the MIKE ECO Lab update frequency

## 5.2 Classes

The Classes dialog shows a summary of the classes defined in the selected model definition. This dialog is only visible if the chosen template contains a valid particle class description.

The name and description of each class variable are given. From the list view you can go to the dialog for specification by clicking on the “Go to..” button.

### 5.2.1 General description

Each particle class may be defined by a number of attributes like state variables, constants and restricted area search functions. State variables of a class represent internal states and they are the variables the user wants usually to predict. Constants usually represent rates or thresholds whereas restricted area search functions are used by a particle to interact/sense the environment.

### 5.2.2 Class specification

This single class overview page is just a static information page listing the class name and description and the number of pre-defined state variables, constants, arithmetical and restricted area search functions of this specific class.

#### State variables

The state variables dialog shows a summary of the state variables defined. The state variables are static.

#### Constants

The class constants dialog lists all constants defined for this class with their name, description and unit together with a user-defined numeric value. The number and type of constants cannot be modified. If no class constants are defined the dialog is not shown.



## Restricted area search functions

The class restricted area search functions page lists all restricted area search functions defined for this class with their number and description. The number and type of functions cannot be modified. If no spatial constants are defined the dialog is not shown.

## 5.3 State Variables

The state variables dialog shows a summary of the state variables defined in the MIKE ECO Lab model. The Symbol, Description, Unit and Transport type ("NONE" refers to a fixed State Variable and "AD" refers to a moveable state variable, which is transported by Advection-dispersion) of each State Variable are given. If no state variables are defined the dialog is not shown.

### 5.3.1 General description

State variables are usually the most important variables in a process oriented MIKE ECO Lab template. State variables represent those variables that describe the state of the ecosystem and that the user wants to predict the state of. So they are also the main result after running a MIKE ECO Lab set-up. The state variable will change according to how the processes that the model developer describes affects it. So the critical task for the model developer is to describe the processes in a way, so that the state of the state variable changes correctly, also when forcings (external conditions such as e.g. wind, temperature) change.

### 5.3.2 Transport

In MIKE ECO Lab the state variables that are present in the water column has the option of using the advection-dispersion module for calculating the transport based on hydrodynamics. If this option is not specified in the MIKE ECO Lab template the state variable will have a fixed location and the calculation of its state will only be based on the processes defined in MIKE ECO Lab template and not based on advection-dispersion processes.

State variables that are present in the sediment can not be transported based on the advection-dispersion module.

It is also possible to have state variables in the water column that have a fixed nature. An example of that could be relevant in models involving aquaculture, for instance cages of scallops in the water column.

### 5.3.3 Units

In MIKE ECO Lab it is possible to use a limited number predefined unit types that are supporting the EUM unit conversion system.



For state variables there are 3 unit types to choose from in the MIKE ECO Lab template editor.

1. Volume Concentration [mg/l]. In the engine dialogs of MIKE ECO Lab this unit can be converted to other units for mass and volume chosen by the user.
2. Area Concentration [g/m<sup>2</sup>]. In the engine dialogs of MIKE ECO Lab this unit can be converted to other units for mass and area chosen by the user.
3. Undefined, here some user specified text can be written that will be written in e.g. output, but no conversion will take place by the EUM unit conversion system.

## 5.4 Solution Technique

The simulation time and accuracy can be controlled by specifying the order of the numerical schemes which are used in the numerical calculations. Both the scheme for time integration and for space discretization can be specified. You can select either a lower order scheme (first order) or a higher order scheme. The lower order scheme is faster, but less accurate. For more details on the numerical solution techniques, see the scientific documentation. If no state variables are defined this dialog is not shown.

The time integration of the transport (advection-dispersion) equations is performed using an explicit scheme. Due to the stability restriction using an explicit scheme the time step interval must be selected so that the CFL number is less than 1. A variable time step interval is used in the calculation and it is determined so that the CFL number is less than a critical CFL number in all computational nodes. To control the time step it is also possible for the user to specify a minimum time step and a maximum time step. The time step interval for the transport equations is synchronized to match the overall time step specified on the Time dialog.

The minimum and maximum time step interval and the critical CFL number is specified in the Solution Technique dialog in the HYDRODYNAMIC MODULE.

### 5.4.1 Remarks and hints

If the important processes are dominated by convection (flow), then higher order space discretization should be chosen. If they are dominated by diffusion, the lower order space discretization can be sufficiently accurate. In general, the time integration method and space discretization method should be chosen alike.



Choosing the higher order scheme for time integration will increase the computing time by a factor of 2 compared to the lower order scheme. Choosing the higher order scheme for space discretization will increase the computing time by a factor of 1½ to 2. Choosing both as higher order will increase the computing time by a factor of 3-4. However, the higher order scheme will in general produce results that are significantly more accurate than the lower order scheme.

The default value for the critical CFL number is 1, which should secure stability. However, the calculation of the CFL number is only an estimate. Hence, stability problems can occur using this value. In these cases you can reduce the critical CFL number. It must be in the range from 0 to 1. Alternatively, you can reduce the maximum time step interval. Note, that setting the minimum and maximum time step interval equal to the overall time step interval specified on the Time dialog, the time integration will be performed with constant time step. In this case the time step interval should be selected so the the CFL number is smaller than 1.

The total number of time steps in the calculation and the maximum and minimum time interval during the calculation are printed in the log-file for the simulation. The CFL number can be saved in an output file.

The higher order scheme can exhibit under and over shoots in regions with steep gradients. Hence, when the higher order scheme is used in combination with a limitation on the minimum and maximum value of the concentration, then mass conservation cannot be guaranteed.

## 5.5 Constants

In the MIKE ECO Lab Constants dialog the MIKE ECO Lab constants defined in the MIKE ECO Lab template can be modified. If no constants are defined the dialog is not shown.

The constants are defined as any input parameter (physical constant, coefficient, rate, etc.) in the MIKE ECO Lab model, which is constant in time. The constants are essentially divided into two groups:

- Built-in constants
- User-specified Constants.

The built-in constants are automatically provided by the model system during execution, whereas the user-specified constants have to be specified in the present dialog. Depending on the spatial variation of the constant, as defined in the MIKE ECO Lab template, it can be specified as a "Constant value", a "Type 2 data file" or a dfsu file with one time step.



**NOTE:** A constant, which is defined as a built-in constant in the MIKE ECO Lab template, will appear as a user-defined constant in case it is not supported by MIKE 21 Flow Model FM.



### 5.5.1 General description

Constants are used as arguments in the mathematical expressions of processes in a MIKE ECO Lab template. They are constant in time, but can vary in space. Typical examples of constants are different specific rate coefficients, exponents, halfsaturation concentrations and also universal constants such as gas constant and atomic weights.

### 5.5.2 Built-in constants

It is possible in MIKE ECO Lab templates to refer to constants that are specified or calculated in the hydrodynamic engines of MIKE. The available built-in constants are not the same in all the hydrodynamic engines. If it is specified that it should be a built-in constant and it is not available in the engine, the engine dialog will prompt as if the constant was user specified.

It is possible to choose from the following list of built-in constants in MIKE 21 Flow Model FM:

1. Latitude. If available, this built-in constant returns the latitude of the model area.
2. Longitude. If available, this built-in constant returns the longitude of the model area.
3. Bed level. If available, this built-in constant returns the altitude of the model area.
4. AD time step (AD\_DT). This built-in constant returns the duration of time between every advection-dispersion calculation.
5. MIKE ECO Lab time step (WQ\_DT). This built-in constant returns the time step in seconds between every update by the MIKE ECO Lab Module.

### 5.5.3 Remarks and hints

Some coefficients and transformation rates can be found in the litterature, but many have not been documented in litterature. So this possible lack of information is wise to investigate, before defining a complex MIKE ECO Lab model.

## 5.6 Forcings

In the MIKE ECO Lab Forcings dialog the MIKE ECO Lab forcings defined in the MIKE ECO Lab template can be modified. The Forcings are defined as any input parameter (physical property, rate, etc.) in the MIKE ECO Lab model, which is varying in time. Examples of a forcing are: Temperature,



salinity, solar radiation, and water depth. The forcings are essentially divided into two groups:

- Built-in forcings
- User-specified forcings.

The built-in forcings are automatically provided by the model system during execution, whereas the user-specified forcings have to be specified in the present dialog. Depending on the spatial variation of the forcing, as defined in the MIKE ECO Lab model, it can be specified as a "Constant value", a "Type 0 data file", a "Type 2 data file" or a dfsu file. The data files have to cover the entire simulation period. In case a type 2 file is allowed for, it must cover the spatial extent and coordinates of the mesh file.



NOTE: A forcing, which is defined as a built-in forcing in the MIKE ECO Lab model, will appear as a user-defined forcing here in case it is not supported by MIKE 21 Flow Model FM.

### 5.6.1 General description

Forcings are used as arguments in the mathematical expressions of processes in a MIKE ECO Lab template. They can vary in time and space. They represent variables of an external nature that affect the ecosystem. Typical examples of forcings are temperature, solar radiation and wind.

### 5.6.2 Built-in forcings

It is possible in MIKE ECO Lab templates to refer to forcings that are specified or calculated in the hydrodynamic engines of MIKE. The available built-in forcings are not the same in all the DHI hydrodynamical engines. If it is specified that it should be a built-in forcing and it is not available in the engine, the engine dialog will prompt as if the forcing was user specified.

It is possible to choose from the following list of built-in forcings:

1. Water layer height. This forcing returns the spatial distance between layers. In one layered grid systems the water depth will be returned
2. Salinity. If available, this forcing returns the salinity calculated in the hydrodynamic set-up
3. Temperature. If available, this forcing returns the temperature calculated in the hydrodynamic set-up
4. Wind velocity. If available, this forcing returns the wind velocity specified in the hydrodynamic set-up
5. Wind direction. If available, this forcing returns the wind direction specified in the hydrodynamic set-up



6. Water surface level. This forcing returns the water level calculated in the hydrodynamic set-up
7. Water depth. This forcing returns the water depth calculated in the hydrodynamic set-up
8. Horizontal current speed. This forcing returns the horizontal current speed calculated in the hydrodynamic set-up
9. Horizontal current direction. This forcing returns the horizontal current direction calculated in the hydrodynamic set-up
10. Vertical current speed. This forcing returns the vertical current speed calculated in the hydrodynamic set-up
11. Water surface slope in flow direction. This forcing returns the slope of the water surface calculated in the hydrodynamic set-up. Under normal conditions positive values.
12. Water density. If available in hydrodynamic simulation this forcing returns a value for water density

### 5.6.3 Remarks and hints

If many measurements are available of a state variable, it is possible to temporarily replace it with a forcing. This way a specific process can be isolated and calibrated with less uncertainty. After calibrating the process, the forcing can be transformed back into a state variable again.

## 5.7 Dispersion

In numerical models the dispersion usually describes transport due to non-resolved processes. In coastal areas it can be transport due to non-resolved turbulence or eddies. Especially in the horizontal directions the effects of non-resolved processes can be significant, in which case the dispersion coefficient formally should depend on the resolution.

The dispersion is specified individually for each AD state variable and for each particle class.

### 5.7.1 Dispersion specification

The dispersion can be formulated in one of three ways

- No dispersion
- Dispersion coefficient formulation
- Scaled eddy viscosity formulation

Selecting the dispersion coefficient formulation you must specify the dispersion coefficient.





Using the scaled eddy viscosity formulation the dispersion coefficient is calculated as the eddy viscosity used in solution of the flow equations multiplied by a scaling factor. For specification of the eddy viscosity see section 6.6, Eddy Viscosity.

## Data

Selecting dispersion coefficient option the format of the dispersion coefficient can be specified as

- Constant (in both time and domain)
- Varying in domain

For the case with dispersion coefficient varying in domain you have to prepare a data file containing the dispersion coefficient before you set up the hydrodynamic simulation. The file must be a 2D unstructured data file (dfsu) or a 2D grid data file (dfs2). The area in the data file must cover the model area. If a dfsu-file is used, a piecewise constant interpolation is used to map the data. If a dfs2-file is used, a bilinear interpolation is used to map the data.

Selecting Scaled eddy viscosity option the format of the scaling factor can be specified as

- Constant
- Varying in domain

For the case with values varying in domain you have to prepare a data file containing the scaling factor before you set up the hydrodynamic simulation. The file must be a 2D unstructured data file (dfsu) or a 2D data grid file (dfs2). The area in the data file must cover the model area. If a dfsu-file is used, a piecewise constant interpolation is used to map the data. If a dfs2-file is used, a bilinear interpolation is used to map the data.

### 5.7.2 Recommended values

When more sophisticated eddy viscosity models are used, as the Smagorinsky or  $k-\varepsilon$  models, the scaled eddy formulation should be used.

The scaling factor can be estimated by  $1/\sigma_T$ , where  $\sigma_T$  is the Prandtl number. The default value here for the Prandtl number is 0.9 corresponding to a scaling factor of 1.1.

The dispersion coefficient is usually one of the key calibration parameters for the Transport Module. It is therefore difficult to device generally applicable values for the dispersion coefficient. However, using Reynolds analogy, the dispersion coefficient can be written as the product of a length scale and a velocity scale. In shallow waters the length scale can often be taken as the water depth, while the velocity scale can be given as a typical current speed.



Values in the order of 1 are usually recommended for the scaling factor. For more information see e.g. (Rodi, 1980 /2/).

## 5.8 Drift profile

This section is only relevant when including particle classes.

### 5.8.1 General description

The drift profile is a description of the drift regime that the particles are influenced by. It will normally be the currents and the wind that governs the drift regime. The currents including wind are already calculated in the hydrodynamic setup, but the hydrodynamic output does normally not have a fine discretization of the current profile near the bed. For MIKE 21 FM for instance it is depth average values that are the output of the hydrodynamic setup, and even for MIKE 3 FM the drift conditions near the bed are normally not resolved adequately for describing sediment particles. Therefore it can be a good idea to assume some shapes of the vertical drift profile.

It is possible to include the bed friction drag on the current profile by assuming a bed shear profile (or logarithmic profile). For MIKE 21 FM the bed shear profile will be applied in the whole water column.

The wind drag can also cause increased flow velocities in the upper part of the water column, and corresponding velocities in the opposite direction in the lower part. In MIKE 3 FM this effect can be included in the hydrodynamic output, but the depth averaged MIKE 21 FM is not able to do that. So if this flow regime should be described in MIKE 21 FM PT, the wind induced profile must be applied, that will distribute the depth averaged flow in the water column.

If particles are in the water surface, they can be influenced directly by the wind additionally to the influence from the flow. This will result in an additional acceleration of the particle in a direction relative to the wind turned with a wind drift angle caused by coriolis forces.

### 5.8.2 Class drift profile

The different drift profile types can be combined in the following ways

- Use raw data from hydrodynamics
- Use bed shear profile
- Use surface wind acceleration
- Use bed shear profile and surface wind acceleration



Depending on the choice of drift profile you specify some additional parameters.

## Bed shear profile

The shape of the velocity profile within a turbulent boundary layer is well established by both theory and experience. The profile has specific characteristics very close to the bed where viscosity controls the vertical transport of momentum, and different characteristics farther from the bed where turbulence controls the vertical transport of momentum. The region closest to the bed boundary is called the laminar sub-layer or viscous sub-layer, because within the region turbulence is suppressed by viscosity. The laminar sublayer only plays a significant role for smooth flows, whereas for rough flows the flow is zero for  $z$  smaller than  $z_0$ .

Logarithmic layer ( $z \geq \delta_s$  smooth flow) ( $z \geq z_0$  rough flow)

$$u = \frac{2,3}{k} \cdot u^* \cdot \log_{10} \frac{x}{z_0} \quad (5.13)$$

where

$u^*$ :	Friction velocity
$k$ :	Karman constant = 0.4
$z_0$ :	characteristic roughness

## Surface wind acceleration

The user must specify wind weight, wind drift angle and the kinematic viscosity in order to calculate the surface wind acceleration.

Particles that are exposed to wind in the water surface are affected according to the wind regime in 2 ways: Indirectly via the currents that include the wind, but also directly as an extra force on the particle. How much of the wind speed that are transferred to the particle speed depends on the nature of the particle, how much is the particle exposed etc, so therefore it is a calibration factor that expresses how much of the windspeed that is added to the particle speed.

$$\begin{aligned} U_{particle} &= U_{current} + C_w \cdot W \cdot \sin(\theta_{dir} - \pi + \theta_w) \\ V_{particle} &= V_{current} + C_w \cdot W \cdot \cos(\theta_{dir} - \pi + \theta_w) \end{aligned} \quad (5.14)$$

where

$C_w$ :	Calibration factor for wind drag on particle
$\theta_{dir}$ :	Wind direction
$\theta_w$ :	Wind drift angle



### Wind drift angle

The coriolis force is normally included in the hydrodynamic currents, but for the wind acceleration of surface particles the coriolis force must be considered as well.

Due to the influence from the Coriolis force, the direction of the wind drift vector is turned relatively to the wind direction. The angle  $q_w$  of deviation is termed with the wind drift angle. It turns to the right on the Northern Hemisphere and to the left on the Southern Hemisphere. Thus wind drift angles for the Southern Hemisphere should be specified by negative values. From Al-Rabeh (1994), it is assumed that

$$\theta_w = \beta \exp\left(\frac{\alpha |U_w|^3}{g \gamma_w}\right) \quad (5.15)$$

where

$\alpha$ :	$-0.3 \cdot 10^{-8}$
$\beta$ :	$28^\circ 38'$
$\gamma_w$ :	Kinematic viscosity [m <sup>2</sup> /s]
$g$ :	Gravity [m/s <sup>2</sup> ]

The magnitude of the wind drift angle varies with the geographical location and wind speed and it is often estimated at 12-15 degrees in the North Sea.

## 5.9 Bed Roughness

This section is only relevant when including particle classes.

The bed roughness is used in the particle transport sub-model if the class drift profile is defined as a bed shear profile (logarithmic profile). It is an important parameter for describing the near bed flow conditions.

The bed roughness can be specified as

- Bed roughness from hydrodynamic model
- User specified bed roughness

### 5.9.1 General description

The bed roughness in the particle transport sub-model is defined by the Nikuradse roughness  $k_s$ . This roughness parameter may be converted from other roughness definitions as described below.



Chezy number conversion to Nikuradse roughness  $k_s$ :

$$k_s = \frac{12h}{10^{(C/18)}} \quad (5.16)$$

where

$h$ : Water depth  
 $C$ : Chezy number

Manning number conversion to Nikuradse roughness  $k_s$ :

$$k_s = \left( \frac{25.4}{M} \right)^6 \quad (5.17)$$

where  $M$  is the Manning number.

## 5.9.2 Bed roughness from hydrodynamic model

The bed resistance is often already specified in the hydrodynamic setup.

In MIKE 21 FM bed resistance can be specified as Manning number, or Chezy number. If bed roughness from hydrodynamic model is selected, the Manning number, or Chezy number will be automatically converted to Nikuradse roughness  $k_s$  (see 5.9.1 General description).

## 5.9.3 User specified bed roughness

The bed roughness must be specified as Nikuradse roughness and it can be specified as

- Constant
- Varying in domain

For the case with values varying in domain you have to prepare a data file containing the bed roughness before you set up the hydrodynamic simulation. The file must be a 2D unstructured data file (dfs1) or a 2D grid data file (dfs2). The area in the data file must cover the model area. If a dfs1-file is used, a piecewise constant interpolation is used to map the data. If a dfs2-file is used, a bilinear interpolation is used to map the data.

## 5.10 Wind Forcing

This section is only relevant when including particle classes.



The wind forcing is used in the particle transport sub-model if the Class drift profile is defined using the influence from wind.

The wind forcing can be specified as

- User specified wind, speed and direction
- User specified wind and velocity components
- Wind from hydrodynamic model

### 5.10.1 User specified wind

The wind forcing can be specified as

- Constant
- Varying in time, constant in domain
- Varying in time and domain

For the case with values varying in domain you have to prepare a data file containing the wind forcing (speed and direction (in degrees from true North) or velocity components) before you set up the hydrodynamic simulation. The file must be a 2D unstructured data file (dfs\_u) or a 2D grid data file (dfs2). The area in the data file must cover the model area. If a dfs\_u-file is used, a piece-wise constant interpolation is used to map the data. If a dfs2-file is used, a bilinear interpolation is used to map the data.

Furthermore a soft start interval must be specified.

## 5.11 Precipitation-Evaporation

If your simulation includes precipitation and/or evaporation, you need to specify the concentration of each AD state variable in the precipitated and evaporated water mass. The precipitation and evaporation can be included in two ways

- Ambient concentration.  
The concentration of the precipitated/evaporated water mass is set equal to the concentration of the ambient sea water.
- Specified concentration.  
The concentration of the precipitated/evaporated water mass is specified explicitly.

If you have chosen the net precipitation option in the Precipitation-Evaporation dialog in the HYDRODYNAMIC MODULE, the precipitation concentration will be used when the specified net-precipitation is positive. When the net-precipitation is negative, the evaporation concentration is used.



The precipitation-evaporation is specified individually for each AD state variable.

### 5.11.1 Specification

#### Data

Selecting the specified concentration option the format of the concentration (in component unit) can be specified as

- Constant (in both time and domain)
- Varying in time and constant in domain
- Varying in both time and domain

For the case with concentration varying in time but constant in domain you have to prepare a data file containing the concentration (in component unit) before you set up the hydrodynamic simulation. The data file must be a time series file (dfs0). The data must cover the complete simulation period. The time step of the input data file does not, however, have to be the same as the time step of the hydrodynamic simulation. A linear interpolation will be applied if the time steps differ.

For the case with concentration varying both in time and domain you have to prepare a data file containing the concentration (in component units) before you set up the hydrodynamic simulation. The file must be a 2D unstructured data file (dfs1) or a 2D grid data file (dfs2). The area in the data file must cover the model area. If a dfs1-file is used, a piecewise constant interpolation is used to map the data. If a dfs2-file is used, a bilinear interpolation is used to map the data. The data must cover the complete simulation period. The time step of the input data file does not, however, have to be the same as the time step of the hydrodynamic simulation. A linear interpolation will be applied if the time steps differ.

#### Soft start interval

You can specify a soft start interval during which the precipitation/evaporation concentration is increased linearly from 0 to the specified values of the precipitation/evaporation concentration. By default the soft start interval is zero (no soft start).

### 5.11.2 Recommended values

Usually it is most sensible to set the concentration of the evaporated water mass to zero, in which case the component is conserved in the water.



## 5.12 Infiltration

If your simulation includes infiltration you need to specify the concentration of each AD state variable in the infiltrated water mass. This can be done two ways

- Ambient concentration.  
The concentration in the infiltrated water mass is set equal to the concentration in the ambient sea water.
- Specified concentration.  
The concentration in the infiltrated water mass is specified explicitly.

### Data

Selecting the specified concentration option the format of the concentration can be specified as:

- Constant (in both time and domain)
- Varying in time and constant in domain
- Varying in time and domain

For the case with concentration varying in time but constant in domain you have to prepare a data file containing the concentration (in component unit) before you set up the hydrodynamic simulation. The data file must be a time series file (dfs0). The data must cover the complete simulation period. The time step of the input data file does not, however, have to be the same as the time step of the hydrodynamic simulation. A linear interpolation will be applied if the time steps differ.

For the case with concentration varying both in time and domain you have to prepare a data file containing the concentration (in component units) before you set up the hydrodynamic simulation. The file must be a 2D unstructured data file (dfs1) or a 2D grid data file (dfs2). The area in the data file must cover the model area. If a dfs1-file is used piecewise constant interpolation is used to map the data. If a dfs2-file is used bilinear interpolation is used to map the data. The data must cover the complete simulation period. The time step of the input data file does not, however, have to be the same as the time step of the hydrodynamic simulation. A linear interpolation will be applied if the time steps differ.

### Soft start interval

You can specify a soft start interval during which the infiltrated concentration is increased linearly from 0 to the specified values of the infiltrated concentration. By default the soft start interval is zero (no soft start).





## 5.13 Sources

Point sources of dissolved components are important in many applications as e.g. release of nutrients from rivers, intakes and outlets from cooling water or desalination plants.

In the MIKE ECO Lab Module, the source concentrations of each component in every sources point can be specified. The number of sources, their generic names, location and discharges magnitude are specified in the Sources dialog in the HYDRODYNAMIC MODULE.

Depending on the choice of property page you can see a geographic view or a list view of the sources.

The source concentrations are specified individually for each source and each component. From the list view you can go to the dialog for specification by clicking on the “Go to..” button.

### 5.13.1 Source specification

The type of sources can be specified in two ways

- Specified concentration
- Excess concentration

The source flux is calculated as  $Q_{\text{source}} \cdot C_{\text{source}}$  where  $Q_{\text{source}}$  is the magnitude of the source and  $C_{\text{source}}$  is the concentration of the source. The magnitude of the source is specified in the Sources dialog in the HYDRODYNAMIC MODULE.

When selecting the specified concentration option the source concentration is the specified concentration if the magnitude of the source is positive (water is discharged into the ambient water). The source concentration is the concentration at the source point if the magnitude of the source is negative (water is discharge out the ambient water). This option is pertinent to e.g. river outlets or other sources where the concentration is independent of the surrounding water.

When selecting the excess concentration option the source concentration is the sum of the specified excess concentration and concentration at a point in the model if the magnitude of the source is positive (water is discharge into the ambient water). If it is an isolated source the point is the location of the source. If it is a connected source, the point is the location where water is discharged out of the water. The source concentration is the component concentration at the source point if the magnitude of the source is negative (water is discharged out of the ambient water).



## Data

The format of the source information can be specified as

- Constant (in time)
- Varying in time

For the case with source concentration varying in time you have to prepare a data file containing the concentration (in concentration units) of the source before you set up the hydrodynamic simulation. The data file must be a time series file (dfs0). The data must cover the complete simulation period. The time step of the input data file does not, however, have to be the same as the time step of the hydrodynamic simulation. A linear interpolation will be applied if the time steps differ.

### 5.13.2 Remarks and hints

Point sources are entered into elements, such that the inflowing mass of the component initially is distributed over the element where the source resides. Therefore the concentration seen in the results from the simulation usually is lower than the source concentration.

## 5.14 Particle Sources

Particle sources are only available when the chosen template defines at least one valid particle class. A particle source is used to introduce members or particles of a specific class into the model. Particle sources do not depend on water inflow and thus must be specified independently of hydraulic sources.

By switching property page you can see a Geographic View or a List View of the sources. New sources can be added to both these views.

In the List View you can create a new source by clicking on the "New source" button. By selecting a source in the Source list and clicking on the "Delete source" you can remove this source. For each source you can specify the name of the source and whether the source should be active or not. The specification of detailed information for each source is made subsequently. From the List View page you can go to the dialog for specification by clicking on the "Go to .." button.

In the Geographic View it is also possible to create a new source by selecting "Add new..." from the context menu. The geographical position of the source is set to the mouse pointer coordinates and depending on the source type, the source location can then be edited by dragging the source symbols on the map. The additional information for the source is made subsequently.



### 5.14.1 Particle source specification

Two general types of source layouts can be specified:

- Point source
- Area source

Each of the source layouts has several sub-types. In general, point sources specify a single, defined point in space whereas area sources describe a spatial domain where particles are released. A normal source is active throughout the complete simulation time. An initial source is used to specify an initial particle distribution and does not release any particles during the rest of simulation.

A source may include one or many different types of particle classes. The additional information for each particle class is made subsequently. You may choose to include or exclude the defined classes in the simulation.

#### Coordinates

You have to specify the map projection (Longitude/Latitude, UTM, etc.) in which you want to specify the location coordinates of the particle source.

#### Vertical source specification

Apart from the horizontal specification, a source location must be specified vertically in the water column. Three definitions are available for the vertical positioning of a source. The vertical reference can be defined as :

- Depth (positive downwards from the moving water surface)
- Above bed (positive upwards relative to the sea bed)
- Datum (absolute level)

An area source may further spawn over a range in the water column. In this case a vertical layer thickness has to be given. The vertical position of a released particle is then randomly selected within the defined layer, i.e. extending from the reference point plus the layer thickness. All data on vertical position refer to the length unit. If the source definition causes a particle to be released above surface/below bed level, the position is set to the surface/bed respectively.

#### Point source

The location of a point source must be defined using one of two sub-types

- Fixed location
- Moving location



For the fixed location source option, i.e. the source is stationary during simulation time, you must specify the horizontal coordinates of the source point and its vertical position.

For the moving location source option, i.e. the source is moving along a defined path, you must specify a time series file (dfs0) that contains the horizontal coordinates and the vertical position of the source as a function of time. The unit of the vertical position is meters and the value is to be given according to the defined vertical type.

## Area source

The location of an area source must be defined using one of two sub-types

- Point collection
- Contour/Shape

An area source describes either a collection of individual (fixed) points or a geometric shape. A point collection can be an irregular placed group of individual points or a regular grid within a defined rectangle. When declaring a contour/shape source particles are released in the space covered by a geometric figure. In all cases the specifications of the released particles is valid for any location within the source.

### Particle casting

Particles are placed within the area covered by the area source definition. It may be that the described area includes land elements (e.g. a small island, land borders etc.). In this case a particle potentially can be placed outside the domain. If this happens, the particle may be re-casted to find a valid location in the domain a given number of times. If this finally does not succeed, the particle may be ignored (skip to the next particle) or the simulation will be stopped with an error. Note that the amount of released substances will probably not match your expectations if particles are ignored as the particle associated items will not enter the simulation!

### Point collection

Point collections describe a number of individual, fixed source locations in the horizontal plane belonging to the same source. Such a collection is defined by one of two area definitions

- Regular grid  
(points located at the cell centers in a given rectangular grid)
- Irregular point collection  
(irregular placed, individual points)

The advantage over individual fixed point sources is that the item definitions refer all release points.



### *Particle placing*

Depending on the grid type the release locations will be used sequential (row by column, column by row) or randomly permuted. Note that all positions inside a point collection have to be used before a particle can be released at the same position again, e.g. if there are 15 points in total and 15 particle per time step are released, every location will receive one particle. Thus even if random filling is selected all release locations will be used before a new permutation is selected.

### *Regular grid*

In case of a regular grid the anchor point describes the lower left corner of the rectangle covering the source area. The source rectangle extends a given width along the X-axis and a height along the Y-axis and may be rotated around the anchor point. The area is divided into a regular grid of N x M columns and rows. The actual particle release positions are located at the crossing/centres of the columns and rows.

### *Irregular point collection*

An irregular grid consists of a number of individual, irregular placed points in the horizontal plane.

### *Contour/Shape*

A contour/shape source is defined by a set of points in the horizontal plane and a number of elements made of these points to describe the actual release area. Every release element must be characterised by three points. Depending on the selected points the release location will be a single location (all points of the element are the same), a line (2 points are the same) or a triangle (three different points). The final release location is a random point on a line element or inside a triangle element. Both the points and elements have to be created manually and the first point must be placed inside the domain (water point). Subsequent points may be placed outside water elements.

### *Particle placing*

Normally particle placing is based on the total area. In this way particles cover the total source area (covered by all elements) uniformly. Please note that by definition elements describing single locations (all points in the element are the same) or elements describing a line (two points are the same) do not have an area. If particles are placed based on the total area, such elements will not receive any particles! In this case the particles should be placed based on the sub-element count. By doing this, every sub element has the same probability to receive a particle.

## Released class items

The number of particles to be released into the flow per overall time step can be a constant number (same number every time step) or the number of released particles can be read from a time series data file (dfs0). Be aware that interpolation between data points may lead to an unexpected number of



particles, thus it is best to provide a data series with the same time resolution than the simulation.

The individual state variables/class items can be specified separately. In general the release format for a state variable can be constant, time varying or from a specified distribution. The source data will be checked against the allowed minimum/maximum item value. If the source value is outside this range, the value will be clipped to ensure that the item value will not violate the minimum/ maximum.

Certain state variables, e.g. a length or a gender indicator, etc., have to be declared on a per-particle base. However, mass items may be declared as the overall emitted amount, i.e. the amount is split among all released particles. This is especially useful if you change the number of particles as the released amount will be independent on the number of particles. On the other hand, the released amount can be specified on a per-particle base.

Similarly the amount of mass items can be declared to be handled as flux or instantaneous release.



**NOTE:** The interpretation of the values depends on the combined settings for the mass components and number of release particles.

### Individual state variables

Each state variable/ class item can be configured separately. The format can be either

- Constant
- Varying in time
- Within range
- Normal distribution
- Discrete distribution

If the format is set to constant or time varying, every particle will receive the specified values, in case of a time series read from a time series data file (dfs0). If the format is one of the following settings, each individual particle will receive an individual value.

#### **Within range**

Value uniformly distributed between given Min and Max values.

#### **Normal distribution**

Value from a normal distribution with given mean and standard deviation.

#### **Discrete distribution**

Value determined from the specified discrete distribution.

A discrete distribution is characterised by a number of bins. Each bin has a certain width and an associated value. The “width” determines the “proportion” or probability for this bin and that a particle will receive the associated



value. The width can be a direct scale (i.e. number of items in that bin) or a probability. The value has to be given in the correct item unit.

## 5.15 Initial Conditions

The initial conditions are the spatial distribution of the component concentration throughout the computational domain at the beginning of the simulation. Initial conditions must always be provided. The initial conditions can be the result from a previous simulation in which case the initial conditions effectively act as a hot start of the concentration field for each state variable.

It is currently not possible to specify initial conditions for particle classes. Initial conditions can only be specified for normal state variables.

The initial conditions are specified individually for each state variable.

### Data

The format of the initial concentration (in component unit) for the state variable can be specified as

- Constant (in domain)
- Varying in domain

For the case with varying in domain you have to prepare a data file containing the concentration (in component unit) before you set up the hydrodynamic simulation. The file must be a 2D unstructured data file (dfs2) or a 2D grid data file (dfs2). The area in the data file must cover the model area. If a dfs2-file is used, a piecewise constant interpolation is used to map the data. If a dfs2-file is used, a bilinear interpolation is used to map the data. In case the input data file contains a single time step, this field is used. In case the file contains several time steps, e.g. from the results of a previous simulation, the actual starting time of the simulation is used to interpolate the field in time. Therefore the starting time must be between the start and end time of the file.

## 5.16 Boundary Conditions

Boundary conditions are only valid for AD-state variables (concentrations). If a particle leaves the domain it is lost and can not re-enter the simulation. Initially, the set-up editor scans the mesh file for boundary codes (sections), displays the recognized codes and suggest a default name for each. You can rename these names to more meaningful names in the Domain dialog.

Depending on the choice of property page you can get a geographic view or a list view of the boundaries.



The specification of the individual boundary information for each code (section) and each component is made subsequently. From the list view you can go to the dialog for specification by clicking the “Go to..” button.

### 5.16.1 Boundary specification

You can choose between the following three boundary types

- Land
- Specified values (Dirichlet boundary condition)
- Zero gradient (Neumann boundary condition).

#### Data

If specified values (Dirichlet boundary condition) is selected, the format of the concentration (in component unit) for the AD state variable at the boundary can be specified as

- Constant (in time and along boundary)
- Varying in time and constant along boundary
- Varying in time and along boundary

For the case with boundary data varying in time but constant along the boundary you have to prepare a data file containing the concentration (in component unit) before you set up the hydrodynamic simulation. The data file must be a time series file (dfs0). The data must cover the complete simulation period. The time step of the input data file does not, however, have to be the same as the time step of the hydrodynamic simulation. You can choose between different types of interpolation (see Interpolation type).

For the case with boundary data varying both in time and along the boundary you have to prepare a data file containing the concentration (in component unit) before you set up the hydrodynamic simulation. The data file must be a profile file (dfs1). The data must cover the complete simulation period. The time step of the input data file does not, however, have to be the same as the time step of the hydrodynamic simulation. You can choose between different types of time interpolation.

#### Interpolation type

For the two cases with values varying in time two types of time interpolation can be selected:

- Linear
- Piecewise cubic





In the case with values varying along the boundary two methods of mapping from the input data file to the boundary section are available:

- Normal
- Reverse order

Using normal interpolation, the first and last point of the line are mapped to the first and the last node along the boundary section and the intermediate boundary values are found by linear interpolation. Using reverse order interpolation, the last and first point of the line are mapped to the first and the last node along the boundary section and the intermediate boundary values is found by linear interpolation.

### Soft start interval

You can specify a soft start interval during which boundary values are increased from a specified reference value to the specified boundary value in order to avoid shock waves being generated in the model. The increase can either be linear or follow a sinusoidal curve.

## 5.17 Hydrodynamic Conditions

If the Hydrodynamic Module is not included in the simulation you have to provide the flow information using these settings. The MIKE ECO Lab module will then run in a so called stand-alone mode, using an external flow field. The flow information can be read from both unstructured (dfsu) or gridded (dfs2/dfs3) data files. The data files need to cover the model area and span over the entire simulation period. The flow information will be interpolated into the domain mesh, i.e. it can be based on a different (coarser) resolution than the actual domain mesh. If a dfsu-file is used, a piecewise constant interpolation is used to map the data. If a dfs2-file is used, a bilinear interpolation is used to map the data

### 2D setup (Mike21)

For a 2D setup you have to provide a 2D/area data file with the information on either the surface level or the total water depth and the U- and V-components of the flow field. If the bathymetry is not constant during the simulation period (i.e. morphological changes) the file also has to provide the still water depth.

## 5.18 Temperature

The temperature can be specified as

- Not included  
The model assumes a default value for the whole model domain
- User specified temperature



- From hydrodynamic model  
The data calculated in the hydrodynamic module is used directly  
(This option is not available when running a stand-alone setup)

### 5.18.1 User specified temperature

With a user specified setting, the data can be:

- Constant
- Varying in time, constant in domain
- Varying in time and domain

For the case with values varying in domain you have to prepare a data file containing the information before you set up the hydrodynamic simulation. The file must be a 2D unstructured data file (dfs\_u) or a 2D grid data file (dfs2). The area in the data file must cover the model area. If a dfs\_u-file is used, a piecewise constant interpolation is used to map the data. If a dfs2-file is used, a bilinear interpolation is used to map the data

## 5.19 Salinity

The salinity can be specified as

- Not included  
The model assumes a default value for the whole model domain
- User specified salinity
- From hydrodynamic model  
The data calculated in the hydrodynamic module is used directly  
(This option is not available when running a stand-alone setup)

### 5.19.1 User specified salinity

With a user specified setting, the data can be:

- Constant
- Varying in time, constant in domain
- Varying in time and domain

For the case with values varying in domain you have to prepare a data file containing the information before you set up the hydrodynamic simulation. The file must be a 2D unstructured data file (dfs\_u) or a 2D grid data file (dfs2). The area in the data file must cover the model area. If a dfs\_u-file is used, a piecewise constant interpolation is used to map the data. If a dfs2-file is used, a bilinear interpolation is used to map the data



## 5.20 Density

The density can be specified as

- Not included  
The model assumes a default value for the whole model domain
- User specified density
- From hydrodynamic model  
The data calculated in the hydrodynamic module is used directly  
(This option is not available when running a stand-alone setup)

### 5.20.1 User specified density

With a user specified setting, the data can be:

- Constant
- Varying in time, constant in domain
- Varying in time and domain

For the case with values varying in domain you have to prepare a data file containing the information before you set up the hydrodynamic simulation. The file must be a 2D unstructured data file (dfsu) or a 2D grid data file (dfs2). The area in the data file must cover the model area. If a dfsu-file is used, a piecewise constant interpolation is used to map the data. If a dfs2-file is used, a bilinear interpolation is used to map the data

## 5.21 Output

Standard data files with computed results from the simulation can be specified here. Because result files tend to become large, it is normally not possible to save the computed discrete data in the whole area and at all time steps. In practice, sub areas and subsets must be selected.

In the main outputs dialog you can add a new output file by clicking on the "New output" button. By selecting a file in the Output list and clicking on the "Delete output" you can remove this file. For each output file you can specify the name (title) of the file and whether the output file should be included or not. The specification of the individual output files is made subsequently. You can go to the dialog for specification by clicking on the "Go to .." button. Finally, you can view the results using the relevant MIKE Zero viewing/editing tool by clicking on the "View" button during and after the simulation.

### 5.21.1 Geographic view

This shows the geographical position of the output data.



## 5.21.2 Output Specification

For each selected output file, the field type, the output format, the treatment of flood and dry, the output file (it's name and location) and time step must be specified. Depending on the output format the geographical extend of the output data must also be specified.

### Field type

For a 2D simulation 2D field parameters can be selected. If the model definition contains state variables, the mass budget for a domain and the discharge through a cross section can also be selected. If the model definition includes particle classes, particle track and particle track mass budget for can be selected as well.

### Output format

The possible choice of output format depends on the specified field type.

For 2D field variables the following formats can be selected

- Point series. Selected field data in geographical defined points.
- Lines series. Selected field data along geographical defined lines.
- Area series. Selected field data in geographical defined areas.

If mass budget is selected for the field type, you have to specify the domain for which the mass budget should be calculated. The file type will be a dfs0 file.

If discharge is selected for the field type, you have to specify the cross section through which the discharge should be calculated. The file type will be a dfs0 file.

If particle track is selected for the field type, you have to specify the domain within which the particle tracks should be saved. The track will be written as a structured XML file containing all the selected variables.

If particle track mass budget is selected for the field type, you have to specify the domain for which the mass budget should be calculated. The file type will be a dfs0 file.



Table 5.1 List of tools for viewing, editing and plotting results

Output format	File type	Viewing/editing tools	Plotting tools
Point series	dfs0	Time Series Editor	Plot Composer
Line series	dfs1	Profile Series Editor	Plot Composer
Area series	dfsu	Data Viewer	Data Viewer
Particle track	xml	(Particle overlay)	(Particle overlay)

## Output file

A name and location of the output file must be specified along with the type of data (file type).

## Particle format

The particle data in the XML file can be saved using uncompressed or compressed format. The different formats are described below.

- In uncompressed format the values of the xyz-coordinates and each selected variable are saved on separate lines in the file
- In compressed format the values of the xyz-coordinates and each selected variable are saved in the same line in the file

```
<Particle Nr="51">
<x>1079.511942</x>
<y>1017.705602</y>
<z>-0.9754099093</z>
<age>3120.000000</age>
<Mass>60.00000000</Mass>
</Particle>
```

Figure 5.1 Example of data in XML file using uncompressed particle format

```
<Particle Nr="51">
<![CDATA[1079.511942,1017.705602,-0.9754099093,3120.000000,60.00000000]]>
</Particle>
```

Figure 5.2 Example of data in XML file using compressed particle format

## Treatment of flood and dry

For 2D field parameters the flood and dry can be treated in three different ways



- Whole area
- Only wet area
- Only real wet area

Selecting the only wet area option the output file will contain delete values for land points. The land points are defined as the points where the water depth is less than a drying depth. When selecting the only real wet area option the output file will contain delete values for points where the water depth is less than the wetting depth. The drying depth and the wetting depth are specified on the Flood and Dry dialog. If flooding and drying is not included both the flooding depth and the wetting depth are set to zero.

## Time step

The temporal range refers to the time steps specified under “Simulation Period” in the Time dialog.

## Particle numbers

The range of the particle numbers refer to the particles ID's in each class. During the simulation all new particles are given an ID. The first particle number is 1 and the total number of particles are the multipla of the overall time step and the number of particles released per time step in each class.

The xml file can get very large, and therefore it is possible not to write particle variables for all particles, but only a fraction of the total number of particles, by selecting a frequency higher than 1.

## Point series

You must specify the type of interpolation. You can select discrete values or interpolated values.

The geographical coordinates of the points are either taken from the dialog or from a file. The file format is an ascii file with four space-separated items for each point on separate lines. The first two items must be floats (real numbers) for the x- and y-coordinate. For 2D field data the third item is unused (but must be specified). The last item (the remaining of the line) is the name specification for each point.

You must also select the map projection (LONG/LAT, UTM-32, etc.) in which you want to specify the horizontal location of the points.

If "discrete values" is selected for the type of interpolation, the point values are the discrete values for the elements in which the points are located. The element number and the coordinates of the center of the element are listed in the log-file.



If "interpolated values" is selected for the type of interpolation, the point values are determined by 2nd order interpolation. The element in which the point is located is determined and the point value is obtained by linear interpolation using the vertex (node) values for the actual element. The vertex values are calculated using the pseudo-Laplacian procedure proposed by Holmes and Connell (1989). The element number and the coordinates are listed in the log-file.

## Line series

You must specify the first and the last point on the line and the number of discrete points on the line. The geographical coordinates are taken from the dialog or from a file. The file format is an ascii file with three space-separated items for each of the two points on separate lines. The first two items must be floats (real numbers) for the x- and y-coordinate. For 2D field data the third item is unused (but must be specified). If the file contains information for more than two points (more than two lines), the information for the first two points will be used.

You must also select the map projection (LONG/LAT, UTM-32, etc.) in which you want to specify the horizontal location of the points.

The values for the points on the line are determined by 2nd order interpolation. The element in which the point is located is determined and the point value is obtained by linear interpolation using the vertex (node) values for the actual element. The vertex values are calculated using the pseudo-Laplacian procedure proposed by Holmes and Connell (1989). The element number and the coordinates are listed in the log-file.

## Area series

The discrete field data within a polygon can be selected. The closed region is bounded by a number of line segments. You must specify the coordinates of the vertex points of the polygon. Two successive points are the endpoints of a line that is a side of the polygon. The first and final point is joined by a line segment that closes the polygon. The geographical coordinates of the polygon points are taken from the dialog or from a file. The file format is an ascii file with three space-separated items for each of the two points on separate lines. The first two items must be floats (real numbers) for the x- and y-coordinate. For 2D field data the third item is unused (but must be specified).

You must also select the map projection (LONG/LAT, UTM-32, etc.) in which you want to specify the horizontal location of the points.

## Cross section series

You must specify the first and the last point between which the cross section is defined. The cross section is defined as a section of element faces. The face is included in the section when the line between the two element centers of the faces crosses the line between the specified first and last point. The



geographical coordinates are taken from the dialog or from a file. The file format is an ascii file with three space-separated items for each of the two points on separate lines. The first two items must be floats (real numbers) for the x- and y-coordinate. The third item is unused (but must be specified). If the file contains information for more than two points (more than two lines), the information for the first two points will be used. The faces defining the cross section are listed in the log-file.

You must also select the map projection (LONG/LAT, UTM-32, etc.) in which you want to specify the horizontal location of the points.

## Domain series

The domain for which mass budget should be calculated is specified as a polygon in the horizontal domain. The closed region is bounded by a number of line segments. You must specify the coordinates of the vertex points of the polygon. Two successive points are the endpoints of a line that is a side of the polygon. The first and final point is joined by a line segment that closes the polygon. The geographical coordinates of the polygon points are taken from the dialog or from a file. The file format is an ascii file with three space-separated items for each of the two points on separate lines. The first two items must be floats (real numbers) for the x- and y-coordinate. The third item is unused (but must be specified).

You must also select the map projection (LONG/LAT, UTM-32, etc.) in which you want to specify the horizontal location of the points.

### 5.21.3 Output Items

Depending on the output type various output items are available. The user can specify a selection of written output items. For outputs of different type than "Mass budget" or "Discharge" one can also select among some pre-defined output specifications of the active output type from the output library. You can also invoke the output library by pressing the library button.

## Field variables

You can select the state variables and the additional variables to be included in the output file. The list of additional variables is specified in the MIKE ECO Lab template and can be

- Auxiliary variables
- Processes
- Derived output

If the chosen template defines particle classes it is also possible to select particle attributes for





- State variables
- Derived variables

The hydraulic variables like velocity components are also included in the list of additional variables.

You can include/exclude all variables of a category by the control element in the lower left corner of the dialog. Note that these check boxes are tri-state elements, i.e. when some elements of a category are included and some excluded the check box shows an intermediate state.

The "write" column allows you to specify that the current, instantaneous value or some static data (min, max, average in time etc.) will be saved.

In the "handle" column you can specify that the data will be handled normally or that it will be converted into a mass (total sum), an area concentration (total sum divided by cell area) or a volume concentration (total mass divided by cell volume). For particle attributes the default handling depends on the attribute's type. For mass and concentration attributes the total mass/concentration will be calculated, for other attribute types the average cell value will be used.

Both statistic values and data handling are only supported for MIKE ECO Lab variables and particle attributes.

Depending on the output type particle attributes from all suspended, sedimented or particles within a defined z-Range can be selected as own category.

## Mass budget

You can select the mass budget calculation to be included for the flow and for the AD state variables (state variables which are transported by the advection-dispersion). For each selected component the following items are included in the output file

- Total area - total volume/energy/mass within polygon
- Wet area - volume/energy/mass in the area within polygon for which the water depth is larger than the drying depth.
- Real wet area - volume/energy/mass in the area within polygon for which the water depth is larger than the wetting depth
- Dry area - volume/energy/mass in the area within polygon for which the water depth is less than the drying depth
- Transport - accumulated volume/energy/mass transported over lateral limits of polygon
- Source - accumulated volume/energy/mass added/removed by sources within polygon



- Process - accumulated volume/energy/mass added/removed by processes within polygon
- Error - accumulated volume/energy/mass error within polygon determined as the difference between the total mass change and the accumulated mass due to transport, sources and processes

The accumulated volume/mass error contains the contribution due to correction of the transported component when the values become larger than the specified maximum value or lower than the specified minimum value.

For temperature the relative energy (relative to the energy at 0 °C),  $E$  (J), in a volume of water  $V$  (m<sup>3</sup>) is calculated by

$$E = c_{water}\rho_{water}T \cdot V \quad (5.18)$$

where  $T$  (°C) is the temperature,  $c_{water} = 4217.0$  J/(K·kg) is the specific heat for water and  $\rho_{water} = 1010.0$  kg/m<sup>3</sup> is the density of water.

For salinity the mass of salt,  $M$  (kg), in a volume of water  $V$  (m<sup>3</sup>) is calculated by

$$M = \rho_{water}S \cdot V/1000 \quad (5.19)$$

where  $S$  (PSU) is the salinity and  $\rho_{water} = 1010.0$  kg/m<sup>3</sup> is the density of water.

## Discharge

You can select the discharge calculation to be included for the flow and the AD state variables (state variables which are transported by the advection-dispersion). Each selected component will result in a number of output items.

You can select between two types of output items:

- Basic
- Extended

The basic output items are as follows:

- Discharge - volume/energy/mass flux through the cross section
- Acc. discharge - accumulated volume/energy/mass flux through the cross section

The extended output items that are included in the output file in addition to the basic output items are as follows:

- Positive discharge
- Accumulated positive discharge



- Negative discharge
- Accumulated negative discharge

By definition, discharge is positive for flow towards left when positioned at the first point and looking forward along the cross-section line. The transports are always integrated over the entire water depth.

For temperature the relative energy (relative to the energy at 0 °C),  $E$  (J), in a volume of water  $V$  (m<sup>3</sup>) is calculated by

$$E = c_{water}\rho_{water}T \cdot V \quad (5.20)$$

where  $T$  (°C) is the temperature,  $c_{water} = 4217.0$  J/(K·kg) is the specific heat for water and  $\rho_{water} = 1010.0$  kg/m<sup>3</sup> is the density of water.

For salinity the mass of salt,  $M$  (kg), in a volume of water  $V$  (m<sup>3</sup>) is calculated by

$$M = \rho_{water}S \cdot V / 1000 \quad (5.21)$$

where  $S$  (PSU) is the salinity and  $\rho_{water} = 1010.0$  kg/m<sup>3</sup> is the density of water.

## Particle track

If your model includes a particle class definition you can select to write out the attributes of the particles to a structured xml file. Apart from the state variables and derived variables defined by the particle class you may also output some generic information such as the age since the release of a particle and the movement parameters (horizontal direction and speed, vertical speed) used for the latest movement of the particle.

For each selected particle the following items can be included in the output file

- State variables
- Derive variables
- Age
- Horizontal speed
- Horizontal direction
- Vertical speed

## Particle track mass budget

You can select the mass budget calculation to be included for the particles. For each selected class component the following items are included in the output file



- Suspended active/current - mass of particles in area within polygon that is into suspension
- Suspended accumulated - accumulated mass of particles in area within polygon that has been into suspension
- Sedimented active/current - mass of particles in area within polygon that is settling on seabed
- Sedimented accumulated - accumulated mass of particles in area within polygon that has settled on seabed
- Released active/current - mass of particles in area within polygon that is released within polygon
- Released accumulated - accumulated mass of particles in area within polygon that has been released within polygon
- Stranded active/current - mass of particles in area within polygon that is stranding on dry land
- Stranded accumulated - accumulated mass of particles in area within polygon that has stranded on dry land

## The output library

The output library can be used to maintain different predefined output item selections, i.e. user defined sets of output items for various output types. A single selection of output items is called an output set. Such sets can be stored (and retrieved) from individual files, so called output collections. The output library consist of at least one or more such collections.

The default collection is the initial values collection and represents the parameterisation of the initially loaded setup. It is neither possible to add nor to remove this default collection or to add/delete sets to it. The main purpose of the initial collection is be able to revert to the initial states stored in the setup. To add a new, user defined collection use the "new" button and specify the storage location and file name in the following dialogue. Please note that existing files will be overwritten without further notice! The "load" button can be used to open an existing output collection file, i.e. make all stored output item selections available in the available definition list (see load output definition). The "unload" button will remove the access to selected collection and all its sets but will not delete the collection file.

To add the current active output item specifications of the setup, select the collection and press the "add" button. This will append the collection and add a new output item set. You can specify a name and a short description text for both the collection and for each stored set that will be used to identify a specific set. To update an existing set with the current settings, select the set and use the "update" button. This will overwrite the stored specifications with the current values from the setup.



To leave the parameter set library use the "close" or "save and close" buttons. The later will write any new/updated set (marked with a "\*" in front of their name) to the specified collection files.





## 6 LIST OF REFERENCES

- /1/ Holmes, D. G. and Connell, S. D. (1989), Solution of the 2D Navier-Stokes on unstructured adaptive grids, AIAA Pap. 89-1932 in Proc. AIAA 9th CFD Conference.
- /2/ Rodi, W. (1980), Turbulence Models and Their Application in Hydraulics - A State of the Art Review, *Special IAHR Publication*.







# INDEX



<b>A</b>		
About this guide	9	
Aquaculture	13	
Area series	63	
<b>B</b>		
Bathymetric data	19	
Biological processes	13	
BOD	21	
Boundary data	19	
<b>C</b>		
Calibration	15, 23	
Calibration data	20	
Check list	15	
Chemical processes	13	
<b>D</b>		
Data collection	15, 19	
Dead or living material	13	
DHI software	23	
Dissolved substances	13	
DO	21	
<b>E</b>		
ECO Lab editor	22	
ECO Lab Module	9	
ECO Lab template	9, 16, 21, 29	
Ecological modelling	9	
Ecological processes	13	
Ecosystem	22	
Environmental Impact Assessment (EIA)	13	
Eutrophication	18, 20	
<b>F</b>		
Faecal coliform	21	
Flow Model FM	9	
Forcings	19	
<b>H</b>		
Heavy metal	21	
Hypothesis/theory	16, 22	
<b>I</b>		
Initial conditions	20	
<b>L</b>		
Line series	63	
Living biological organisms	13	
Loadings	20	
<b>M</b>		
MIKE Animator Plus	25	
MIKE Zero	25	
Mussels	13	
<b>N</b>		
Nitrate	21	
Nitrite	21	
<b>P</b>		
Particular matter	13	
Phosphate	21	
Plot Composer	25	
Point series	62	
Predefined DHI supported ECO Lab template	20, 21	
Predefined DHI supported ECO Lab templates	13	
Project analysis	15, 17, 18	
<b>R</b>		
Restricted area search	35	
<b>S</b>		
Seagrasses	13	
Sources	19	
State variables	13	
Step-By-Step Training guide	23	
<b>T</b>		
Total coliform	21	
<b>U</b>		
User background	9	