

# MIKE URBAN CS/MOUSE Tools

MergeERF

Note on the MergeERF tool



**DHI headquarters**

Agern Allé 5  
DK-2970 Hørsholm  
Denmark

+45 4516 9200 Telephone

+45 4516 9333 Support

+45 4516 9292 Telefax

[mike@dhigroup.com](mailto:mike@dhigroup.com)

[www.mikepoweredbydhi.com](http://www.mikepoweredbydhi.com)

## CONTENTS

MIKE URBAN CS/MOUSE Tools

MergeERF

Note on the MergeERF tool

<b>1</b>	<b>The MergeERF Tool .....</b>	<b>1</b>
1.1	Background .....	1
1.2	Usage .....	1
1.3	Details on the Conversion .....	1



## 1 The MergeERF Tool

The following is a brief note describing the functionality of the 'MergeERF' tool released with MIKE URBAN 2011.

### 1.1 Background

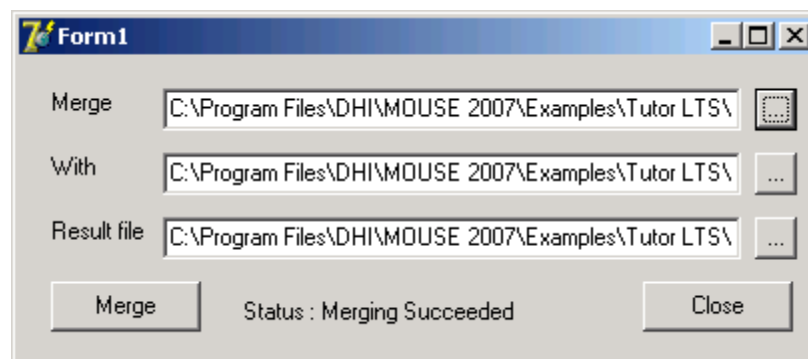
Statistics from a Long Term Statistics (LTS) simulation are stored in an ERF-file. The file stores e.g. extreme statistics based on user input from the ERS-file.

In some situations a LTS simulation is later extended to cover a longer period. In order to avoid having to rerun the first part of simulation again the MergeERF tool can be used to merge to ERF-files created from consecutive LTS simulations.

### 1.2 Usage

The converter is found in the 'Conversion Tool'-directory of the MOUSE/MIKE URBAN installation, from where it may be copied to different directories.

When executed the below dialog is displayed.



In the first field specify the ERF-file generated with the first simulation and in the second field the ERF-file generated with the second simulation. Finally specify a new filename for the combined ERF-file.

To execute the tool press the "Merge" button. Once the Status has changed to "Merge Succeeded" the tool can be closed and the new ERF-file loaded in MIKE View.

### 1.3 Details on the Conversion

It should be noted that the merge functionality only works on hydraulic results and any AD results saved in the original ERF-files will be ignored in the merged version.

It is assumed that the two LTS simulations have been simulated with the same setup and the same ERS-file. The simulation periods should be adjacent and not overlapping.

